

Anti-NLRP3 Rabbit pAb



WL02635

For Research Use Only. Not For Use In Diagnostic Procedures

Product Information

Product name	Anti-NLRP3 Rabbit pAb		
Source	Rabbit		
Species reactivity	Human, Mouse, Rat		
Tested applications	WB	1:1000-1:2000	
	IHC	1:100-1:400	
	IF	1:100-1:400	
Cellular localization	Cytoplasm. Cytoskeleton. Endoplasmic reticulum. Membrane.		
	Mitochondrion. Nucleus. Secreted		
Pack size	50/100/200/500/1000µl		
Storage	Store at -20°C. Avoid freeze/thaw cycles.		
Storage buffer	Supplied in 20 mM phosphate (pH 7.5), 150 mM NaCl, 100 µg/ml		
General Information	BSA, 50% glycerol and less than 0.02% sodium azide		

Background

NLRP3 (Cryopyrin) belongs to the NLRP family and it contains one DAPIN domain, seven LRR (leucine-rich) repeats and one NATCH domain. NLR proteins play a variety of roles during the innate immune response including pathogen sensing, transcriptional activation of proinflammatory cytokines through NF-κB, transcriptional activation of type I interferons through IRFs, and formation of inflammasomes leading to activation of inflammatory caspases. Mutations in Cryopyrin and Pyrin proteins are responsible for several autoinflammatory disorders in humans, including familial cold autoinflammatory syndrome (FCAS), Muckle-Wells syndrome (MWS) and chronic infantile neurologic cutaneous and articular syndrome (CINCA).

Immunogen

Polyclonal antibody is produced by immunizing animals with a synthetic peptide of NLRP3.

Purification

Polyclonal antibody was purified by Protein A affinity chromatography.

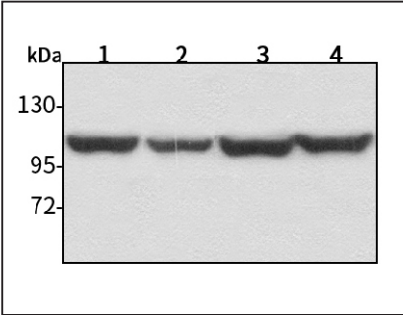
Anti-NLRP3 Rabbit pAb



WL02635

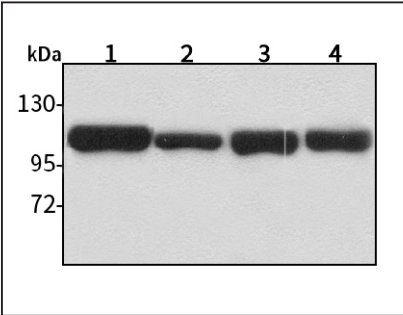
For Research Use Only. Not For Use In Diagnostic Procedures

Product Images



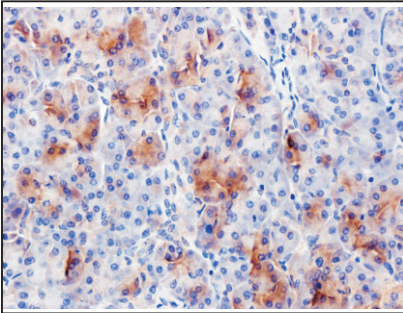
Western blot-Anti-NLRP3 pAb

Lane 1: Human HepG2 cell lysate
Lane 2: Human Hela cell lysate
Lane 3: Human BGC-823 cell lysate
Lane 4: Human MGC-803 cell lysate
All lanes: Anti-NLRP3 at 1:1000 dilution
Lysates/proteins at 20-50 µg per lane.
Predicted band size: 118 kDa
Observed band size: 118 kDa



Western blot-Anti-NLRP3 pAb

Lane 1: Mouse kidney tissue lysate
Lane 2: Mouse heart tissue lysate
Lane 3: Rat brain tissue lysate
Lane 4: Rat stomach tissue lysate
All lanes: Anti-NLRP3 at 1:1000 dilution
Lysates/proteins at 20-50 µg per lane.
Predicted band size: 118 kDa
Observed band size: 118 kDa



Immunohistochemistry-Anti-NLRP3 pAb

Immunohistochemical analysis of paraffin-embedded human pancreatic cancer using anti-NLRP3 Rabbit Antibody at 1:200 dilution.
Perform heat mediated antigen retrieval with Tris-EDTA buffer pH 9.0

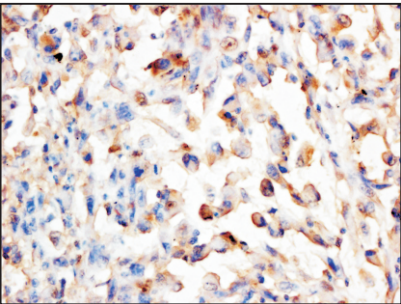
Anti-NLRP3 Rabbit pAb



WL02635

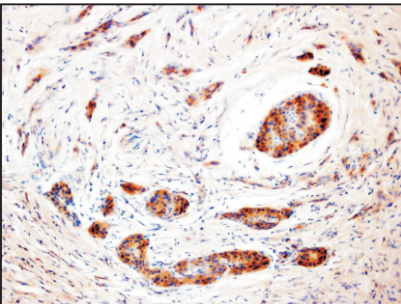
For Research Use Only. Not For Use In Diagnostic Procedures

Product Information



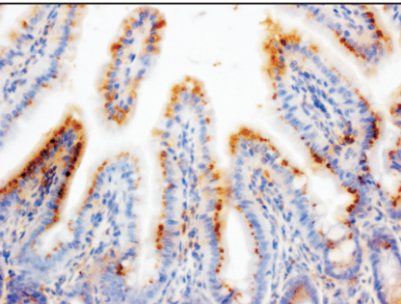
Immunohistochemistry-Anti-NLRP3 pAb

Immunohistochemical analysis of paraffin-embedded human lung cancer using anti-NLRP3 Rabbit Antibody at 1:200 dilution.
Perform heat mediated antigen retrieval with Tris-EDTA buffer pH 9.0



Immunohistochemistry-Anti-NLRP3 pAb

Immunohistochemical analysis of paraffin-embedded human liver cancer using anti-NLRP3 Rabbit Antibody at 1:200 dilution.
Perform heat mediated antigen retrieval with Tris-EDTA buffer pH 9.0



Immunohistochemistry-Anti-NLRP3 pAb

Immunohistochemical analysis of paraffin-embedded mouse intestine using anti-NLRP3 Rabbit Antibody at 1:200 dilution.
Perform heat mediated antigen retrieval with Tris-EDTA buffer pH 9.0

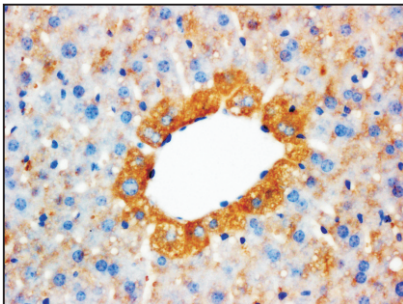
Anti-NLRP3 Rabbit pAb



WL02635

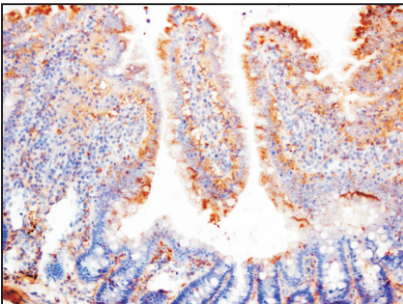
For Research Use Only. Not For Use In Diagnostic Procedures

Product Images



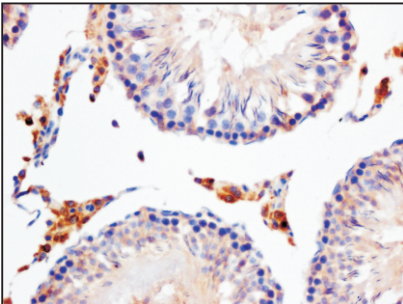
Immunohistochemistry-Anti-NLRP3 pAb

Immunohistochemical analysis of paraffin-embedded mouse fatty liver using anti-NLRP3 Rabbit Antibody at 1:200 dilution.
Perform heat mediated antigen retrieval with Tris-EDTA buffer pH 9.0



Immunohistochemistry-Anti-NLRP3 pAb

Immunohistochemical analysis of paraffin-embedded rat intestine using anti-NLRP3 Rabbit Antibody at 1:200 dilution.
Perform heat mediated antigen retrieval with Tris-EDTA buffer pH 9.0



Immunohistochemistry-Anti-NLRP3 pAb

Immunohistochemical analysis of paraffin-embedded rat testicle using anti-NLRP3 Rabbit Antibody at 1:200 dilution.
Perform heat mediated antigen retrieval with Tris-EDTA buffer pH 9.0

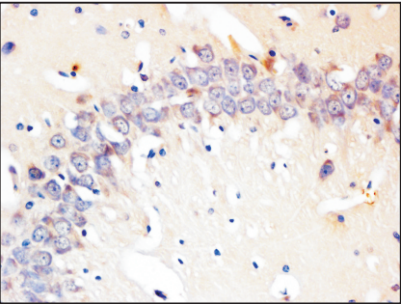
Anti-NLRP3 Rabbit pAb



WL02635

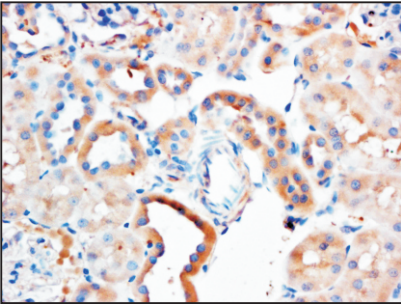
For Research Use Only. Not For Use In Diagnostic Procedures

Product Information



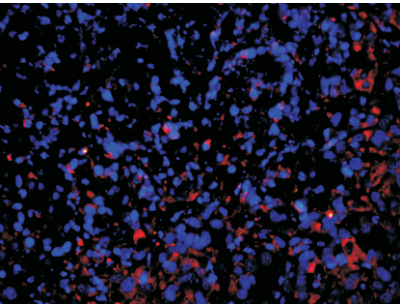
Immunohistochemistry-Anti-NLRP3 pAb

Immunohistochemical analysis of paraffin-embedded rat brain using anti-NLRP3 Rabbit Antibody at 1:200 dilution.
Perform heat mediated antigen retrieval with Tris-EDTA buffer pH 9.0



Immunohistochemistry-Anti-NLRP3 pAb

Immunohistochemical analysis of paraffin-embedded rat kidney using anti-NLRP3 Rabbit Antibody at 1:200 dilution.
Perform heat mediated antigen retrieval with Tris-EDTA buffer pH 9.0



Immunofluorescence-Anti-NLRP3 pAb

Immunofluorescence analysis of paraffin-embedded mouse lung using anti-NLRP3 Rabbit Antibody at 1:200 dilution.
Perform heat mediated antigen retrieval with Tris-EDTA buffer pH 9.0

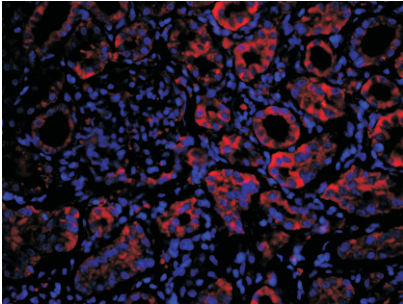
Anti-NLRP3 Rabbit pAb



WL02635

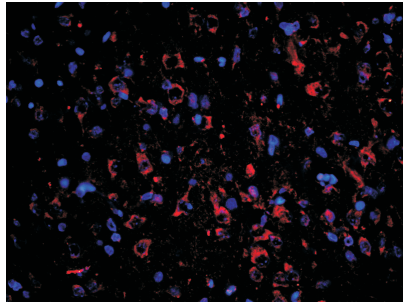
For Research Use Only. Not For Use In Diagnostic Procedures

Product Images



Immunofluorescence-Anti-NLRP3 pAb

Immunofluorescence analysis of paraffin-embedded rat kidney using anti-NLRP3 Rabbit Antibody at 1:200 dilution.
Perform heat mediated antigen retrieval with Tris-EDTA buffer pH 9.0



Immunofluorescence-Anti-NLRP3 pAb

Immunofluorescence analysis of paraffin-embedded rat brain using anti-NLRP3 Rabbit Antibody at 1:200 dilution.
Perform heat mediated antigen retrieval with Tris-EDTA buffer pH 9.0