

Anti-MDM2 Rabbit pAb



WL01906

For Research Use Only. Not For Use In Diagnostic Procedures

Product Information

Product name	Anti-MDM2 Rabbit pAb		
Source	Rabbit		
Species reactivity	Human, Mouse, Rat		
Tested applications	WB	1:1000-1:2000	
	IHC	1:100-1:200	
Cellular localization	Cytoplasm, Nucleus		
Pack size	50/100/200/500/1000μl		
Storage	Store at -20°C. Avoid freeze/thaw cycles.		
Storage buffer	Supplied in 20 mM phosphate (pH 7.5), 150 mM NaCl, 100 μg/ml		
	BSA, 50% glycerol and less than 0.02% sodium azide		

General Information

Background	MDM2 gene encodes a nuclear-localized E3 ubiquitin ligase. The encoded protein can promote tumor formation by targeting tumor suppressor proteins, such as p53, for proteasomal degradation. p53 is the most commonly mutated gene in human cancer identified to date. Expression of p53 leads to inhibition of cell growth by preventing progression of cells from G1 to S phase of the cell cycle. MDM2 functions to bind p53 and block p53-mediated transactivation of cotransfected reporter constructs. The MDM2 gene is amplified in a high percentage of human sarcomas that retain wildtype p53 and tumor cells that overexpress MDM2 can tolerate high levels of p53 expression.
Immunogen	Polyclonal antibody is produced by immunizing animals with a synthetic peptide of MDM2.
Purification	Polyclonal antibody was purified by Protein A affinity chromatography.

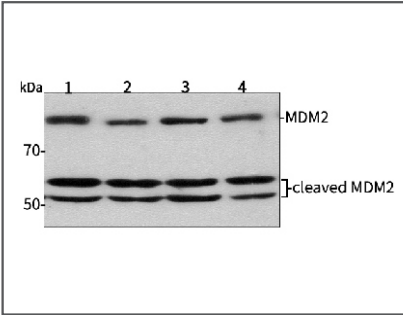
Anti-MDM2 Rabbit pAb



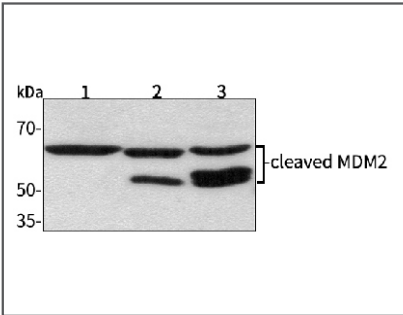
WL01906

For Research Use Only. Not For Use In Diagnostic Procedures

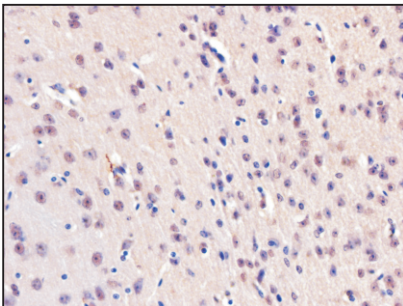
Product Images



Western blot-Anti-MDM2 pAb
Lane 1: Human BGC-823 cell lysate
Lane 2: Human MGC-803 cell lysate
Lane 3: Human SGC-7901 cell lysate
Lane 4: Human MCF-7 cell lysate
All lanes: Anti-MDM2 at 1:1000 dilution
Lysates/proteins at 20-50 μg per lane.
Predicted band size: 55 kDa
Observed band size: 60/90kDa



Western blot-Anti-MDM2 pAb
Lane 1: Mouse kidney tissue lysate
Lane 2: Mouse heart tissue lysate
Lane 3: Rat liver tissue lysate
All lanes: Anti-MDM2 at 1:1000 dilution
Lysates/proteins at 20-50 μg per lane.
Predicted band size: 55 kDa
Observed band size: 60/90kDa



Immunohistochemistry-Anti-MDM2 pAb
Immunohistochemical analysis of paraffin-embedded mouse brain using anti-MDM2 Rabbit Antibody at 1:100 dilution.
Perform heat mediated antigen retrieval with Tris-EDTA buffer pH 9.0