

Anti-LAMP-1 Rabbit pAb



WL03761

For Research Use Only. Not For Use In Diagnostic Procedures

Product Information

Product name	Anti-LAMP-1 Rabbit pAb	
Source	Rabbit	
Species reactivity	Mouse, Rat	
Tested applications	WB	1:1000-1:2000
Pack size	50/100/200/500/1000μl	
Storage	Store at -20°C. Avoid freeze/thaw cycles.	
Storage buffer	Supplied in 20 mM phosphate (pH 7.5), 150 mM NaCl, 100 μg/ml BSA, 50% glycerol and less than 0.02% sodium azide	

General Information

Background	Lysosome-associated membrane proteins (LAMP) are glycosylated type I membrane proteins that play a role in the biogenesis of the pigment melanin. LAMP-1 (also designated CD107a) and LAMP-2 (also designated CD107b) are involved in a variety of functions, including cellular adhesion, and are thought to participate in the process of tumor invasion and metastasis. Both are transmembrane proteins and are heavily glycosylated at the amino-terminal luminal side of the lysosomal inner leaflet, which protects the proteins from proteolysis. The carboxy terminus of LAMP1 is exposed to the cytoplasm and contains a tyrosine sorting motif that targets LAMP to lysosomal membranes.
Immunogen	Polyclonal antibody is produced by immunizing animals with a synthetic peptide of LAMP-1.
Purification	Polyclonal antibody was purified by protein A affinity chromatography.

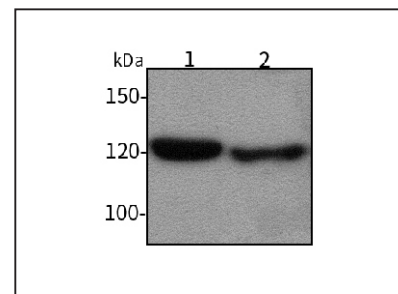
Anti-LAMP-1 Rabbit pAb



WL03761

For Research Use Only. Not For Use In Diagnostic Procedures

Product Images



Western blot-Anti-LAMP-1 pAb

Lane 1: Mouse heart tissue lysate

Lane 2: Rat liver tissue lysate

All lanes: Anti-LAMP-1 at 1:1000 dilution

Lysates/proteins at 20-50 μg per lane.

Predicted band size: 45 kDa

Observed band size: 90-120 kDa