

Anti-NFATc1 Rabbit pAb



WL01632

For Research Use Only. Not For Use In Diagnostic Procedures

Product Information

Product name	Anti-NFATc1 Rabbit pAb	
Source	Rabbit	
Species reactivity	Human, Mouse, Rat	
Tested applications	WB	1:1000-1:2000
	IHC	1:100-1:300
Cellular localization	Cytoplasm, Nucleus	
Pack size	50/100/200/500/1000μl	
Storage	Store at -20°C. <b>Avoid freeze/thaw cycles.</b>	
Storage buffer	Supplied in 20 mM phosphate (pH 7.5), 150 mM NaCl, 100 μg/ml	
	BSA, 50% glycerol and less than 0.02% sodium azide	

General Information

Background	NFAT proteins are widely expressed and alternatively modified to generate splice variants, and they are localized to both the cytosol (NFATc) and to the nucleus (NFATn). NFATc1 (NFATc), NFATc2 (NFATp) and NFATc3 (NFAT4, NFSTx) are predominantly expressed in immune cells, and NFAT2 and NFATc4 are expressed at high levels in cardiac tissues. The NFAT (nuclear factor of activated T cells) family of proteins consists of NFAT1 (NFATc2 or NFATp), NFAT2 (NFATc1 or NFATc), NFAT3 (NFATc4), and NFAT4 (NFATc3 or NFATx). In resting cells, NFAT proteins are heavily phosphorylated and localized in the cytoplasm. Increased intracellular calcium concentrations activate the calcium/calmodulin-dependent serine phosphatase calcineurin, which dephosphorylates NFAT proteins, resulting in their subsequent translocation to the nucleus.
Immunogen	Polyclonal antibody is produced by immunizing animals with a synthetic peptide of NFATc1.
Purification	Polyclonal antibody was purified by protein A affinity chromatography.

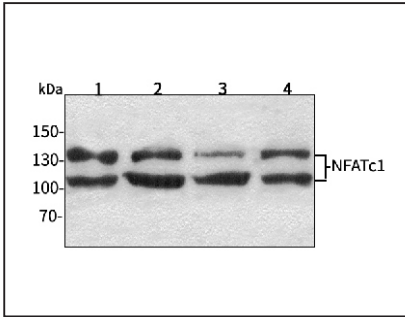
Anti-NFATc1 Rabbit pAb



WL01632

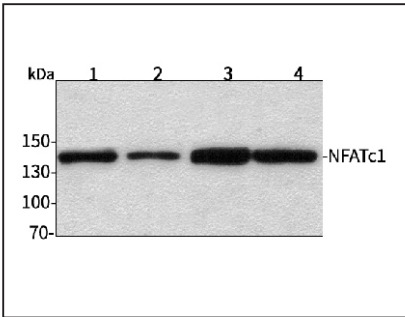
For Research Use Only. Not For Use In Diagnostic Procedures

Product Images



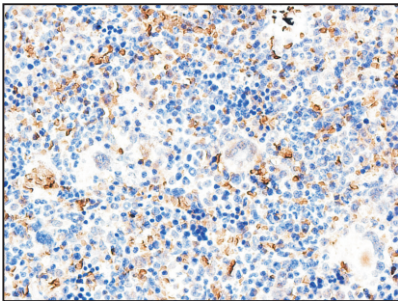
**Western blot-Anti-NFATc1 pAb**

Lane 1: Human HepG2 cell lysate  
Lane 2: Human Hela cell lysate  
Lane 3: Human BGC-823 cell lysate  
Lane 4: Human MGC-803 cell lysate  
All lanes: Anti-NFATc1 at 1:1000 dilution  
Lysates/proteins at 20-50 μg per lane.  
Predicted band size: 101,78 kDa  
Observed band size: 82-140 kDa



**Western blot-Anti-NFATc1 pAb**

Lane 1: Mouse testicle tissue lysate  
Lane 2: Mouse brain tissue lysate  
Lane 3: Rat liver tissue lysate  
Lane 4: Rat heart tissue lysate  
All lanes: Anti-NFATc1 at 1:1000 dilution  
Lysates/proteins at 20-50 μg per lane.  
Predicted band size: 101,78 kDa  
Observed band size: 82-140 kDa



**Immunohistochemistry-Anti-NFATc1 pAb**

Immunohistochemical analysis of paraffin-embedded rat spleen using anti-NFATc1 Rabbit Antibody at 1:200 dilution.  
Perform heat mediated antigen retrieval with Tris-EDTA buffer pH 9.0