

Anti-LAMP-2 Rabbit pAb



WL02761

For Research Use Only. Not For Use In Diagnostic Procedures

Product Information

Product name	Anti-LAMP-2 Rabbit pAb	
Source	Rabbit	
Species reactivity	Human, Mouse, Rat	
Tested applications	WB	1:500-1:1000
	IHC	1:100-1:400
	IF	1:200
Cellular localization	Cell membrane. Endosome membrane. Lysosome membrane	
Pack size	50/100/200/500/1000μl	
Storage	Store at -20°C. Avoid freeze/thaw cycles.	
Storage buffer	Supplied in 20 mM phosphate (pH 7.5), 150 mM NaCl, 100 μg/ml	
	BSA, 50% glycerol and less than 0.02% sodium azide	

General Information

Background	Lysosome-associated membrane protein 2 (LAMP2) also known as CD107b, is one of the lysosome-associated membrane glycoproteins. LAMP2 has been specifically implicated in tumor cell metastasis. Both LAMP1 and LAMP2 have been found expressed on the surface of cancerous tumors, specifically in cells of highly metastatic cancer such as colon cancer and melanoma. Some of the functions of LAMP2 are believed to be protecting the lysosomal membrane from proteolytic enzymes that are within the lysosome itself (as in autodigestion), acting as a receptor into the lysosome for proteins, adhesion (when expressed on the outside surface of the plasma membrane) and signal transduction, both inter- and intra-. It also provides protection for the cell from methylating mutagens.
Immunogen	Polyclonal antibody is produced by immunizing animals with a synthetic peptide of LAMP-2.
Purification	Polyclonal antibody was purified by immunogen affinity chromatography.

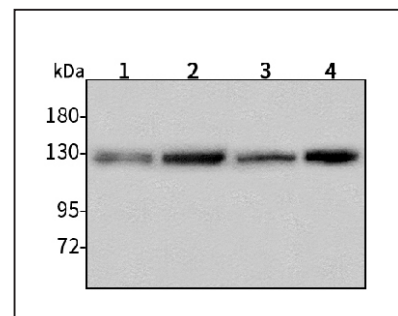
Anti-LAMP-2 Rabbit pAb



WL02761

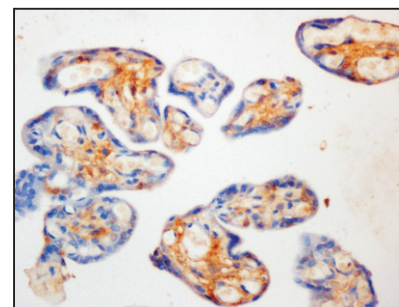
For Research Use Only. Not For Use In Diagnostic Procedures

Product Images



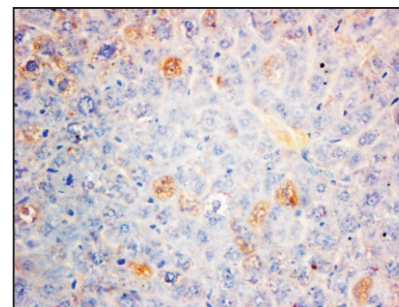
Western blot-Anti-LAMP-2 pAb

Lane 1: Human HepG2 cell lysate
 Lane 2: Human Hela cell lysate
 Lane 3: Human BGC-823 cell lysate
 Lane 4: Human MGC-803 cell lysate
 All lanes: Anti-LAMP-2 at 1:1000 dilution
 Lysates/proteins at 20-50 μg per lane.
 Predicted band size: 45 kDa
 Observed band size: 120 kDa



Immunohistochemistry-Anti-LAMP-2 pAb

Immunohistochemical analysis of paraffin-embedded human placenta using anti-LAMP-2 Rabbit Antibody at 1:200 dilution.
 Perform heat mediated antigen retrieval with Tris-EDTA buffer pH 9.0



Immunohistochemistry-Anti-LAMP-2 pAb

Immunohistochemical analysis of paraffin-embedded mouse liver using anti-LAMP-2 Rabbit Antibody at 1:200 dilution.
 Perform heat mediated antigen retrieval with Tris-EDTA buffer pH 9.0

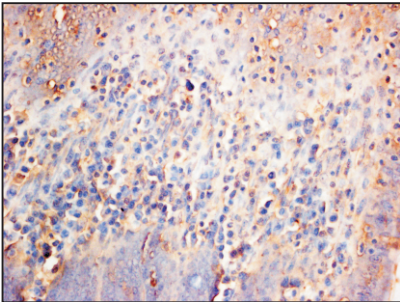
Anti-LAMP-2 Rabbit pAb



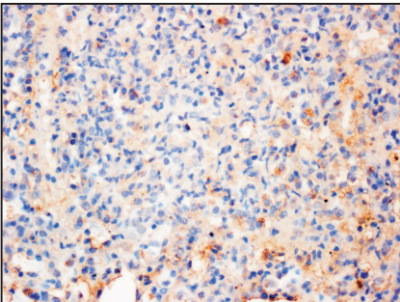
For Research Use Only. Not For Use In Diagnostic Procedures

WL02761

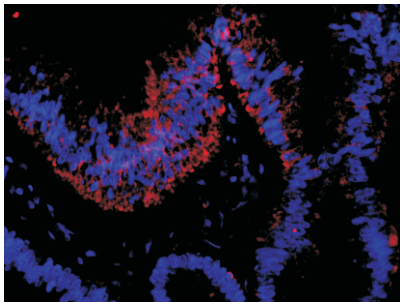
Product Information



Immunohistochemistry-Anti-LAMP-2 pAb
Immunohistochemical analysis of paraffin-embedded rat colon using anti-LAMP-2 Rabbit Antibody at 1:200 dilution.
Perform heat mediated antigen retrieval with Tris-EDTA buffer pH 9.0



Immunohistochemistry-Anti-LAMP-2 pAb
Immunohistochemical analysis of paraffin-embedded rat lung using anti-LAMP-2 Rabbit Antibody at 1:200 dilution.
Perform heat mediated antigen retrieval with Tris-EDTA buffer pH 9.0



Immunofluorescence-Anti-LAMP-2 pAb
Immunofluorescence analysis of paraffin-embedded human rectal cancer using anti-LAMP-2 Rabbit Antibody at 1:200 dilution.
Perform heat mediated antigen retrieval with Tris-EDTA buffer pH 9.0

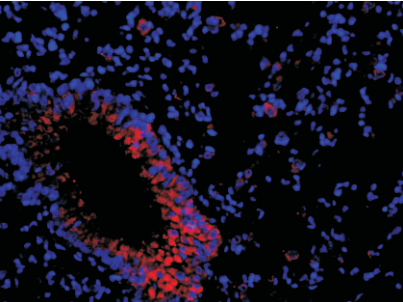
Anti-LAMP-2 Rabbit pAb



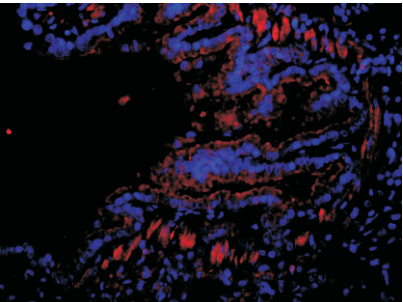
For Research Use Only. Not For Use In Diagnostic Procedures

WL02761

Product Information



Immunofluorescence-Anti-LAMP-2 pAb
Immunofluorescence analysis of paraffin-embedded mouse lung using anti-LAMP-2 Rabbit Antibody at 1:200 dilution.
Perform heat mediated antigen retrieval with Tris-EDTA buffer pH 9.0



Immunofluorescence-Anti-LAMP-2 pAb
Immunofluorescence analysis of paraffin-embedded rat lung using anti-LAMP-2 Rabbit Antibody at 1:200 dilution.
Perform heat mediated antigen retrieval with Tris-EDTA buffer pH 9.0