

Anti-METTL3 Rabbit pAb



WL05194

For Research Use Only. Not For Use In Diagnostic Procedures

Product Information

Product name	Anti-METTL3 Rabbit pAb	
Source	Rabbit	
Species reactivity	Human, Mouse, Rat	
Tested applications	WB	1:1000-1:2000
	IHC	1:500
Cellular localization	Cytoplasm, Nucleus	
Pack size	50/100/200/500/1000µl	
Storage	Store at -20°C. Avoid freeze/thaw cycles.	
Storage buffer	Supplied in 20 mM phosphate (pH 7.5), 150 mM NaCl, 100 µg/ml	
	BSA, 50% glycerol and less than 0.02% sodium azide	

General Information

Background	METTL3 is a key S-adenosyl-L-methionine-binding subunit, which is component of a complex multicomponent enzyme that catalyzes the methylation of internal adenosine residues in eukaryotic mRNA, forming N6-methyladenosine. It contains 2 putative nuclear localization signals and 2 consensus methylation motifs.
Immunogen	Polyclonal antibody is produced by immunizing animals with a synthetic peptide of METTL3.
Purification	Polyclonal antibody was purified by Protein A affinity chromatography.

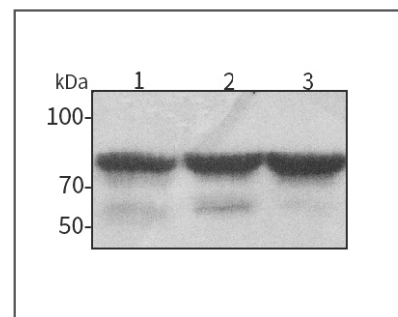
Anti-METTL3 Rabbit pAb



WL05194

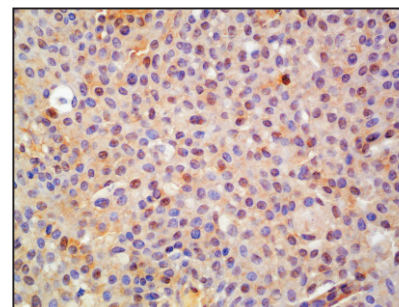
For Research Use Only. Not For Use In Diagnostic Procedures

Product Images



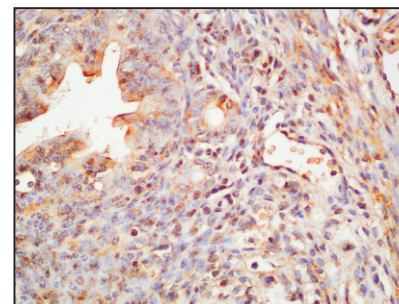
Western blot-Anti-METTL3 pAb

Lane 1: Human A549 cell lysate
Lane 2: Human MCF-7 cell lysate
Lane 3: Human HEK-293 cell lysate
All lanes: Anti-METTL3 at 1:1000 dilution
 Lysates/proteins at 20-50 µg per lane.
 Predicted band size: 64 kDa
 Observed band size: 64 kDa



Immunohistochemistry-Anti-METTL3 pAb

Immunohistochemical analysis of paraffin-embedded human bladder cancer using anti-METTL3 Rabbit Antibody at 1:500 dilution.
 Perform heat mediated antigen retrieval with Tris-EDTA buffer pH 9.0



Immunohistochemistry-Anti-METTL3 pAb

Immunohistochemical analysis of paraffin-embedded mouse uterus using anti-METTL3 Rabbit Antibody at 1:500 dilution.
 Perform heat mediated antigen retrieval with Tris-EDTA buffer pH 9.0

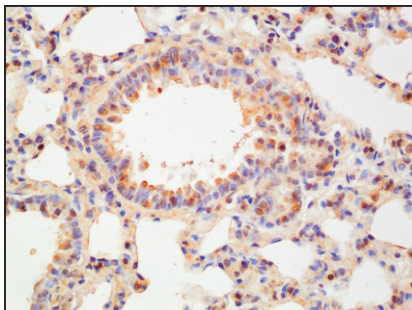
Anti-METTL3 Rabbit pAb



WL05194

For Research Use Only. Not For Use In Diagnostic Procedures

Product Information



Immunohistochemistry-Anti-METTL3 pAb

Immunohistochemical analysis of paraffin-embedded rat lung using anti-METTL3 Rabbit Antibody at 1:500 dilution.

Perform heat mediated antigen retrieval with Tris-EDTA buffer pH 9.0