

Anti-Lamin B1 Rabbit pAb



WL01775

For Research Use Only. Not For Use In Diagnostic Procedures

Product Information

Product name	Anti-Lamin B1 Rabbit pAb	
Source	Rabbit	
Species reactivity	Human, Mouse, Rat	
Tested applications	WB	1:500-1:1000
	IHC	1:150-1:300
Cellular localization	Intermediate filament, Nucleus	
Pack size	50/100/200/500/1000μl	
Storage	Store at -20°C. Avoid freeze/thaw cycles.	
Storage buffer	Supplied in 20 mM phosphate (pH 7.5), 150 mM NaCl, 100 μg/ml	
	BSA, 50% glycerol and less than 0.02% sodium azide	

General Information

Background	The lamin family of proteins make up the matrix and are highly conserved in evolution. During mitosis, the lamina matrix is reversibly disassembled as the lamin proteins are phosphorylated. Lamin proteins are thought to be involved in nuclear stability, chromatin structure and gene expression. Vertebrate lamins consist of two types, A and B. B-type lamins undergo a series of modifications, such as farnesylation and phosphorylation. Increased phosphorylation of the lamins occurs before envelope disintegration and probably plays a role in regulating lamin associations. Nuclear Lamin B is fragmented as a consequence of apoptosis by an unidentified member of the ICE family.
Immunogen	Polyclonal antibody is produced by immunizing animals with a synthetic peptide of Lamin B1.
Purification	Polyclonal antibody was purified by immunogen affinity chromatography.

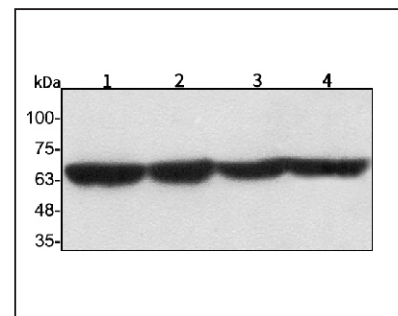
Anti-Lamin B1 Rabbit pAb



WL01775

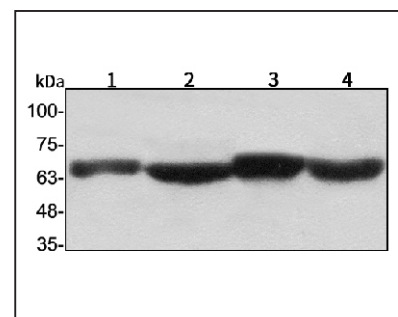
For Research Use Only. Not For Use In Diagnostic Procedures

Product Images



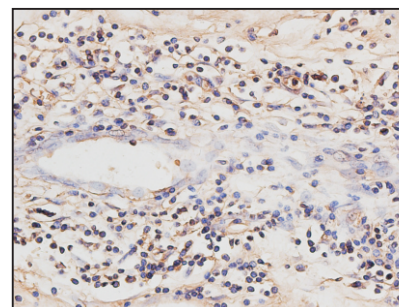
Western blot-Anti-Lamin B1 pAb

Lane 1: Human HepG2 cell lysate
 Lane 2: Human Hela cell lysate
 Lane 3: Human BGC-823 cell lysate
 Lane 4: Human MGC-803 cell lysate
 All lanes: Anti-Lamin B1 at 1:1000 dilution
 Lysates/proteins at 20-50 μg per lane.
 Predicted band size: 67 kDa
 Observed band size: 67 kDa



Western blot-Anti-Lamin B1 pAb

Lane 1: Mouse stomach tissue lysate
 Lane 2: Mouse brain tissue lysate
 Lane 3: Rat lung tissue lysate
 Lane 4: Rat heart tissue lysate
 All lanes: Anti-Lamin B1 at 1:1000 dilution
 Lysates/proteins at 20-50 μg per lane.
 Predicted band size: 67 kDa
 Observed band size: 67 kDa



Immunohistochemistry-Anti-Lamin B1 pAb

Immunohistochemical analysis of paraffin-embedded human pancreatic cancer using anti-Lamin B1 Rabbit Antibody at 1:150 dilution. Perform heat mediated antigen retrieval with Tris-EDTA buffer pH 9.0