

Anti-Lamin B1 Rabbit pAb



WLH3867

For Research Use Only. Not For Use In Diagnostic Procedures

Product Information

Product name	Anti-Lamin B1 Rabbit pAb	
Source	Rabbit	
Species reactivity	Human, Mouse, Rat	
Tested applications	IHC	1:100-1:400
	IF	1:100-1:400
Cellular localization	Intermediate filament, Nucleus	
Pack size	50/100/200/500/1000μl	
Storage	Store at -20°C. Avoid freeze/thaw cycles.	
Storage buffer	Supplied in 20 mM phosphate (pH 7.5), 150 mM NaCl, 100 μg/ml	
	BSA, 50% glycerol and less than 0.02% sodium azide	

General Information

Background	The lamin family of proteins make up the matrix and are highly conserved in evolution. During mitosis, the lamina matrix is reversibly disassembled as the lamin proteins are phosphorylated. Lamin proteins are thought to be involved in nuclear stability, chromatin structure and gene expression. Vertebrate lamins consist of two types, A and B. B-type lamins undergo a series of modifications, such as farnesylation and phosphorylation. Increased phosphorylation of the lamins occurs before envelope disintegration and probably plays a role in regulating lamin associations. Nuclear Lamin B is fragmented as a consequence of apoptosis by an unidentified member of the ICE family.
Immunogen	Polyclonal antibody is produced by immunizing animals with a synthetic peptide of Lamin B1.
Purification	Polyclonal antibody was purified by immunogen affinity chromatography.

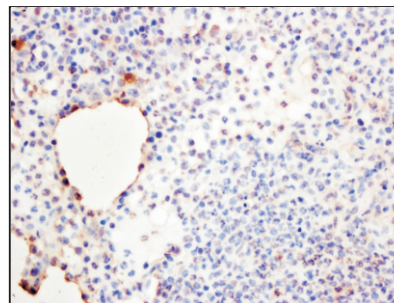
Anti-Lamin B1 Rabbit pAb



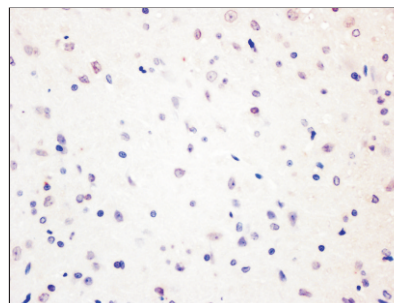
WLH3867

For Research Use Only. Not For Use In Diagnostic Procedures

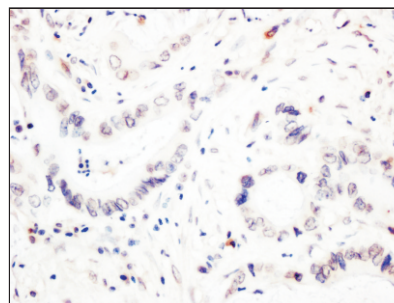
Product Images

**Immunohistochemistry-Anti-Lamin B1 pAb**

Immunohistochemical analysis of paraffin-embedded rat lung using anti-Lamin B1 Rabbit Antibody at 1:300 dilution.
Perform heat mediated antigen retrieval with Tris-EDTA buffer pH 9.0

**Immunohistochemistry-Anti-Lamin B1 pAb**

Immunohistochemical analysis of paraffin-embedded rat brain using anti-Lamin B1 Rabbit Antibody at 1:300 dilution.
Perform heat mediated antigen retrieval with Tris-EDTA buffer pH 9.0

**Immunohistochemistry-Anti-Lamin B1 pAb**

Immunohistochemical analysis of paraffin-embedded human colon cancer using anti-Lamin B1 Rabbit Antibody at 1:300 dilution.
Perform heat mediated antigen retrieval with Tris-EDTA buffer pH 9.0

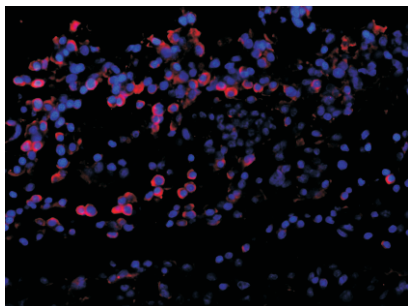
Anti-Lamin B1 Rabbit pAb



WLH3867

For Research Use Only. Not For Use In Diagnostic Procedures

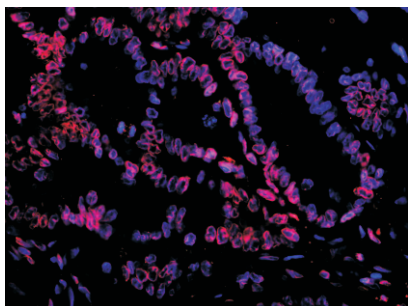
Product Information



Immunofluorescence-Anti-Lamin B1 pAb

Immunofluorescence analysis of paraffin-embedded rat lung using anti-Lamin B1 Rabbit Antibody at 1:200 dilution.

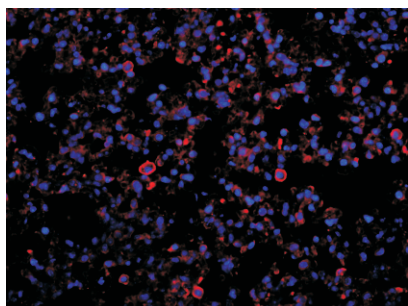
Perform heat mediated antigen retrieval with Tris-EDTA buffer pH 9.0



Immunofluorescence-Anti-Lamin B1 pAb

Immunofluorescence analysis of paraffin-embedded human colon cancer using anti-Lamin B1 Rabbit Antibody at 1:200 dilution.

Perform heat mediated antigen retrieval with Tris-EDTA buffer pH 9.0



Immunofluorescence-Anti-Lamin B1 pAb

Immunofluorescence analysis of paraffin-embedded mouse lung using anti-Lamin B1 Rabbit Antibody at 1:200 dilution.

Perform heat mediated antigen retrieval with Tris-EDTA buffer pH 9.0