

Anti-NOTCH4 Rabbit pAb



WL00379

For Research Use Only. Not For Use In Diagnostic Procedures

Product Information

Product name	Anti-NOTCH4 Rabbit pAb	
Source	Rabbit	
Species reactivity	Human, Mouse, Rat	
Tested applications	WB	1:1000-1:2000
	IHC	1:500
Cellular localization	Cell membrane and Nucleus	
Pack size	50/100/200/500/1000μl	
Storage	Store at -20°C. <b>Avoid freeze/thaw cycles.</b>	
Storage buffer	Supplied in 20 mM phosphate (pH 7.5), 150 mM NaCl, 100 μg/ml	
	BSA, 50% glycerol and less than 0.02% sodium azide	

General Information

Background	NOTCH family of proteins. Members of this Type I transmembrane protein family share structural characteristics including an extracellular domain consisting of multiple epidermal growth factor-like (EGF) repeats, and an intracellular domain consisting of multiple different domain types. Notch signaling is an evolutionarily conserved intercellular signaling pathway that regulates interactions between physically adjacent cells through binding of Notch family receptors to their cognate ligands. Upon ligand activation through the released notch intracellular domain (NICD) it forms a transcriptional activator complex with RBPJ/RBPSUH and activates genes of the enhancer of split locus. Affects the implementation of
Immunogen	Polyclonal antibody is produced by immunizing animals with a synthetic peptide of NOTCH4.
Purification	Polyclonal antibody was purified by Protein A affinity chromatography.

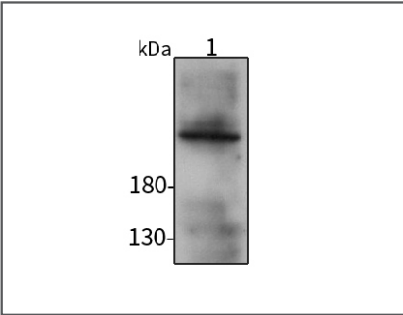
Anti-NOTCH4 Rabbit pAb



WL00379

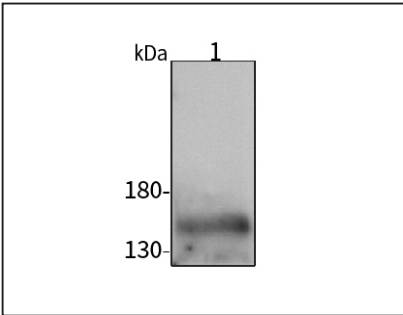
For Research Use Only. Not For Use In Diagnostic Procedures

Product Images



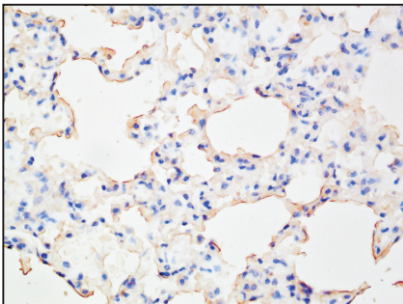
Western blot-Anti-NOTCH4 pAb

Lane 1: Human Hela cell lysate  
All lanes: Anti-NOTCH4 at 1:1000 dilution  
Lysates/proteins at 20-50 μg per lane.  
Predicted band size: 210 kDa  
Observed band size: 150,210 kDa



Western blot-Anti-NOTCH4 pAb

Lane 1: Mouse lung tissue lysate  
All lanes: Anti-NOTCH4 at 1:1000 dilution  
Lysates/proteins at 20-50 μg per lane.  
Predicted band size: 210 kDa  
Observed band size: 150,210 kDa



Immunohistochemistry-Anti-NOTCH4 pAb

Immunohistochemical analysis of paraffin-embedded mouse lung using anti-NOTCH4 Rabbit Antibody at 1:500 dilution.  
Perform heat mediated antigen retrieval with Tris-EDTA buffer pH 9.0

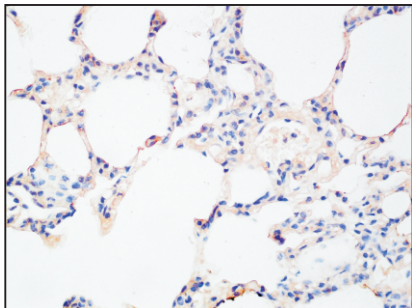
## Anti-NOTCH4 Rabbit pAb



WL00379

For Research Use Only. Not For Use In Diagnostic Procedures

### Product Information



#### Immunohistochemistry-Anti-NOTCH4 pAb

Immunohistochemical analysis of paraffin-embedded rat lung using anti-NOTCH4 Rabbit Antibody at 1:500 dilution.

Perform heat mediated antigen retrieval with Tris-EDTA buffer pH 9.0