

Anti-Rab5A Rabbit pAb



WLA0402

For Research Use Only. Not For Use In Diagnostic Procedures

Product Information

Product name	Anti-Rab5A Rabbit pAb	
Source	Rabbit	
Species reactivity	Human, Mouse, Rat	
Tested applications	WB	1:500-1:1000
	IHC, IF	1:50-1:200
Cellular localization	Cell membrane. Early endosome membrane. Melanosome.	
	Cytoplasmic vesicle. Cell projection. Cytoplasm.	
Pack size	50/100/200/500/1000μl	
Storage	Store at -20°C. Avoid freeze/thaw cycles.	
Storage buffer	Supplied in 20 mM phosphate (pH 7.5), 150 mM NaCl, 100 μg/ml	
	BSA, 50% glycerol and less than 0.02% sodium azide	

General Information

Background	Small GTPases Rab are key regulators of intracellular membrane transport, from the formation of transport vesicles to fusion with the membrane. The RABS cycle operates between the inactive GDP binding form and the active GTP binding form, which can recruit different downstream effect subsets on the membrane and directly responsible for vesicle formation, movement, binding, and fusion. Rab5A is involved in multiple processes, including the clearance rate of amyloid beta through cross cell bacterial disease; Early to late endosomal transport; Regulation of exocytosis.
Immunogen	Polyclonal antibody is produced by immunizing animals with a synthetic peptide of Rab5A.
Purification	Polyclonal antibody was purified by immunogen affinity chromatography.

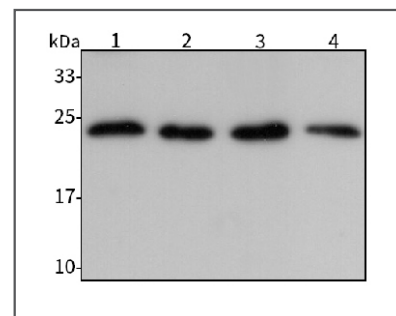
Anti-Rab5A Rabbit pAb



WLA0402

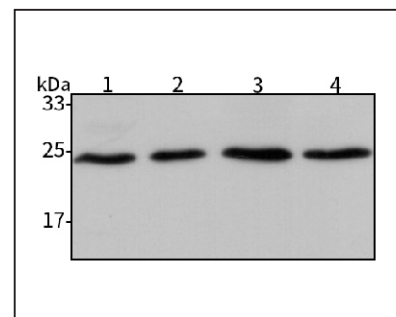
For Research Use Only. Not For Use In Diagnostic Procedures

Product Images



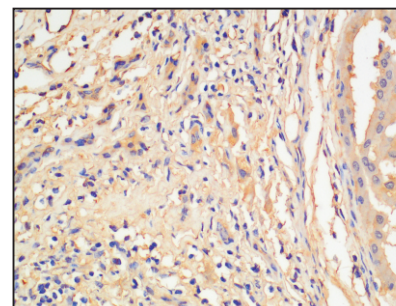
Western blot-Anti-Rab5A pAb

Lane 1: Human HCT116 cell lysate
 Lane 2: Human MDA-MB-231 cell lysate
 Lane 3: Human A549 cell lysate
 Lane 4: Human HUVEC cell lysate
 All lanes: Anti-Rab5A at 1:1000 dilution
 Lysates/proteins at 20-50 μg per lane.
 Predicted band size: 24 kDa
 Observed band size: 24 kDa



Western blot-Anti-Rab5A pAb

Lane 1: Mouse liver tissue lysate
 Lane 2: Mouse lung tissue lysate
 Lane 3: Rat intestine tissue lysate
 Lane 4: Rat stomach tissue lysate
 All lanes: Anti-Rab5A at 1:1000 dilution
 Lysates/proteins at 20-50 μg per lane.
 Predicted band size: 24 kDa
 Observed band size: 24 kDa



Immunohistochemistry-Anti-Rab5A pAb

Immunohistochemical analysis of paraffin-embedded human liver cancer using anti-Rab5A Rabbit Antibody at 1:100 dilution.
 Perform heat mediated antigen retrieval with Tris-EDTA buffer pH 9.0

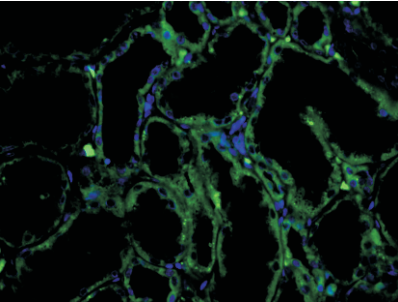
Anti-Rab5A Rabbit pAb



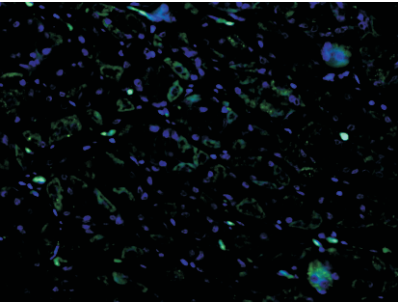
For Research Use Only. Not For Use In Diagnostic Procedures

WLA0402

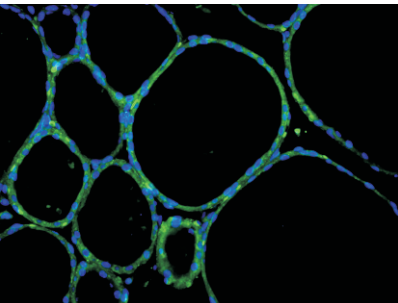
Product Information



Immunofluorescence-Anti-Rab5A pAb
Immunofluorescence analysis of paraffin-embedded human kidney cancer using anti-Rab5A Rabbit Antibody at 1:100 dilution.
Perform heat mediated antigen retrieval with Tris-EDTA buffer pH 9.0



Immunofluorescence-Anti-Rab5A pAb
Immunofluorescence analysis of paraffin-embedded human stomach cancer using anti-Rab5A Rabbit Antibody at 1:100 dilution.
Perform heat mediated antigen retrieval with Tris-EDTA buffer pH 9.0



Immunofluorescence-Anti-Rab5A pAb
Immunofluorescence analysis of paraffin-embedded mouse thyroid using anti-Rab5A Rabbit Antibody at 1:100 dilution.
Perform heat mediated antigen retrieval with Tris-EDTA buffer pH 9.0