

Anti-MMP1 Rabbit pAb



WL01201

For Research Use Only. Not For Use In Diagnostic Procedures

Product Information

Product name	Anti-MMP1 Rabbit pAb	
Source	Rabbit	
Species reactivity	Human, Mouse, Rat	
Tested applications	WB	1:500-1:1000
	IHC	1:200
	IF	1:100-1:400
Cellular localization	Secreted, extracellular space, extracellular matrix	
Pack size	50/100/200/500/1000μl	
Storage	Store at -20°C. Avoid freeze/thaw cycles.	
Storage buffer	Supplied in 20 mM phosphate (pH 7.5), 150 mM NaCl, 100 μg/ml	
	BSA, 50% glycerol and less than 0.02% sodium azide	

General Information

Background	Matrix metalloproteinase-1 (MMP1) also known as interstitial collagenase and fibroblast collagenase is an enzyme that in humans is encoded by the MMP1 gene. MMP1 was the first vertebrate collagenase both purified to homogeneity as a protein, and cloned as a cDNA. MMP1 has an archetypal structure consisting of a pre-domain, a pro-domain, a catalytic domain, a linker region and a hemopexin-like domain. Two main nomenclatures for the primary structure are currently in use, the original one from which the first amino-acid starts with the signalling peptide and a second one where the first amino-acid starts counting from the prodomain (proenzyme nomenclature).
Immunogen	Polyclonal antibody is produced by immunizing animals with a synthetic peptide of MMP1.
Purification	Polyclonal antibody was purified by immunogen affinity chromatography.

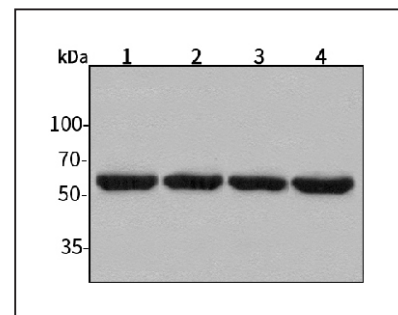
Anti-MMP1 Rabbit pAb



WL01201

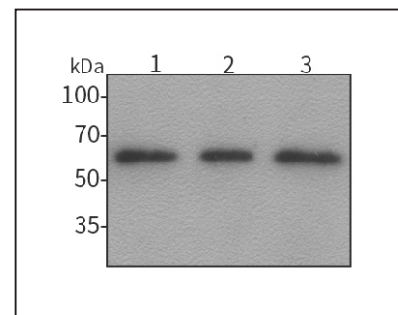
For Research Use Only. Not For Use In Diagnostic Procedures

Product Images



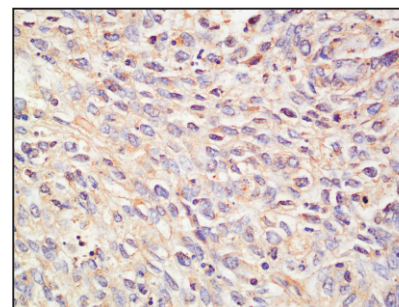
Western blot-Anti-MMP1 pAb

Lane 1: Human HepG2 cell lysate
 Lane 2: Human Hela cell lysate
 Lane 3: Human BGC-823 cell lysate
 Lane 4: Human MGC-803 cell lysate
 All lanes: Anti-MMP1 at 1:1000 dilution
 Lysates/proteins at 20-50 μg per lane.
 Predicted band size: 54 kDa
 Observed band size: 54 kDa



Western blot-Anti-MMP1 pAb

Lane 1: Mouse gall bladder tissue lysate
 Lane 2: Mouse stomach tissue lysate
 Lane 3: Rat colon tissue lysate
 All lanes: Anti-MMP1 at 1:1000 dilution
 Lysates/proteins at 20-50 μg per lane.
 Predicted band size: 54 kDa
 Observed band size: 54 kDa



Immunohistochemistry-Anti-MMP1 pAb

Immunohistochemical analysis of paraffin-embedded human bladder cancer using anti-MMP1 Rabbit Antibody at 1:200 dilution.
 Perform heat mediated antigen retrieval with Tris-EDTA buffer pH 9.0

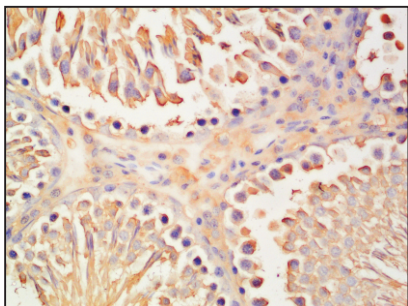
Anti-MMP1 Rabbit pAb



WL01201

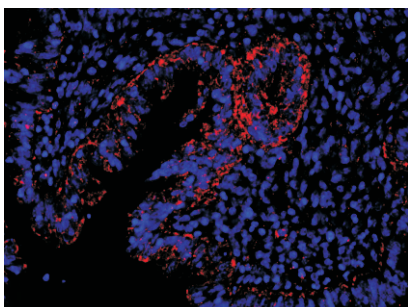
For Research Use Only. Not For Use In Diagnostic Procedures

Product Information



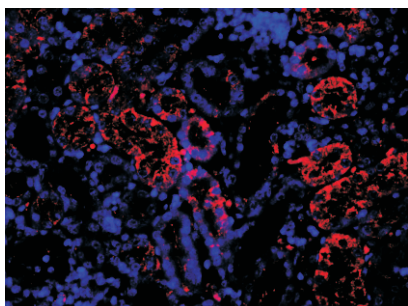
Immunohistochemistry-Anti-MMP1 pAb

Immunohistochemical analysis of paraffin-embedded rat testicle using anti-MMP1 Rabbit Antibody at 1:200 dilution.
Perform heat mediated antigen retrieval with Tris-EDTA buffer pH 9.0



Immunofluorescence-Anti-MMP1 pAb

Immunofluorescence analysis of paraffin-embedded mouse cervix uteri using anti-MMP1 Rabbit Antibody at 1:200 dilution.
Perform heat mediated antigen retrieval with Tris-EDTA buffer pH 9.0



Immunofluorescence-Anti-MMP1 pAb

Immunofluorescence analysis of paraffin-embedded rat kidney using anti-MMP1 Rabbit Antibody at 1:200 dilution.
Perform heat mediated antigen retrieval with Tris-EDTA buffer pH 9.0