

Anti-γ-Catenin/JUP Rabbit pAb



WL04237

For Research Use Only. Not For Use In Diagnostic Procedures

Product Information

Product name	Anti-γ-Catenin/JUP Rabbit pAb	
Source	Rabbit	
Species reactivity	Human, Mouse, Rat	
Tested applications	WB	1:1000-1:2000
	IHC, IF	1:200-1:500
Cellular localization	Cell junction. Cytoplasm. Membrane. Nucleus.	
Molecular Wt.	82 kDa	
Pack size	50/100/200/500/1000μl	
Storage	Store at -20°C. Avoid freeze/thaw cycles.	
Storage buffer	Supplied in 20 mM phosphate (pH 7.5), 150 mM NaCl, 100 μg/ml	
	BSA, 50% glycerol and less than 0.02% sodium azide	

General Information

Background	This gene encodes a major cytoplasmic protein which is the only known constituent common to submembranous plaques of both desmosomes and intermediate junctions. Also known as plakoglobin, γ-catenin is a member of the Armadillo family of signaling molecules, which includes β-catenin and the Drosophila protein armadillo. This family of proteins is involved in Wnt signaling, which is important in embryonic development and in tumorigenesis. This protein forms distinct complexes with cadherins and desmosomal cadherins and is a member of the catenin family since it contains a distinct repeating amino acid motif called the armadillo repeat. Mutation in this gene has been associated with Naxos disease.
Immunogen	Polyclonal antibody is produced by immunizing animals with a synthetic peptide of γ-Catenin/JUP.
Purification	Polyclonal antibody was purified by Protein A affinity chromatography.

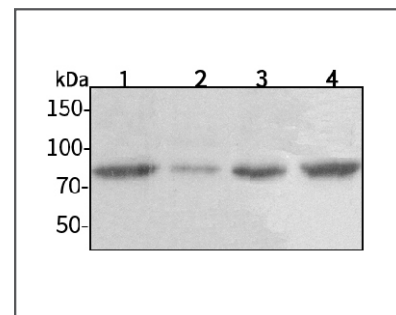
Anti-γ-Catenin/JUP Rabbit pAb



WL04237

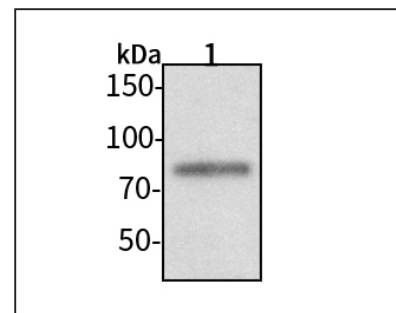
For Research Use Only. Not For Use In Diagnostic Procedures

Product Images



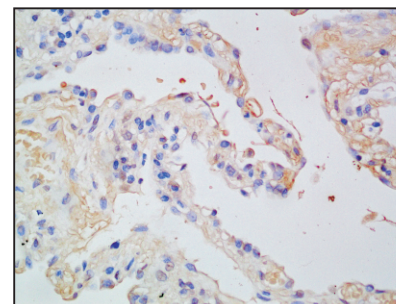
Western blot-Anti-γ-Catenin/JUP pAb

Lane 1: Human Hela cell lysate 30μg
 Lane 2: Human MCF-7 cell lysate 30μg
 Lane 3: Human A549 cell lysate 30μg
 Lane 4: Human HUVEC cell lysate 30μg
Separation gel: 8% polyacrylamide
Electrophoresis: 100V, 4°C, 3h
Transmembrane: 100V, 4°C, 1.5h
Blocking: 5% w/v nonfat dry milk, 1 × TBST, at RT with gentle shaking
Primary antibody: 1:1000 in blocking buffer, 4°C, overnight
Secondary antibody-HRP: 1:7000 in blocking buffer, RT, 45min
Visualization: ECL



Western blot-Anti-γ-Catenin/JUP pAb

Lane 1: Mouse kidney tissue lysate 30μg
Separation gel: 8% polyacrylamide
Electrophoresis: 100V, 4°C, 3h
Transmembrane: 100V, 4°C, 1.5h
Blocking: 5% w/v nonfat dry milk, 1 × TBST, at RT with gentle shaking
Primary antibody: 1:1000 in blocking buffer, 4°C, overnight
Secondary antibody-HRP: 1:7000 in blocking buffer, RT, 45min
Visualization: ECL



Immunohistochemistry-Anti-γ-Catenin/JUP pAb

Immunohistochemical analysis of paraffin-embedded human lung cancer using anti-γ-Catenin/JUP Rabbit Antibody at 1:200 dilution. Perform heat mediated antigen retrieval with Tris-EDTA buffer pH 9.0

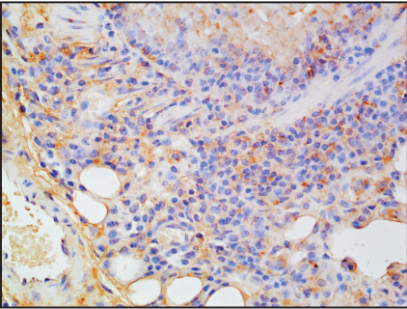
Anti-γ-Catenin/JUP Rabbit pAb



WL04237

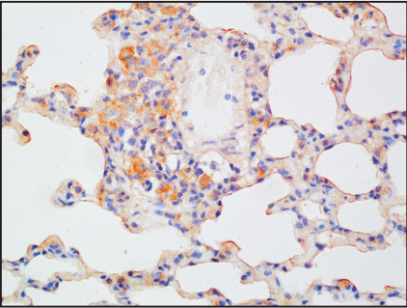
For Research Use Only. Not For Use In Diagnostic Procedures

Product Information



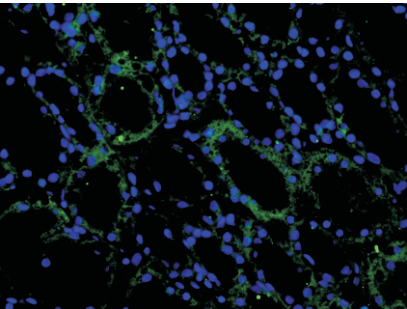
Immunohistochemistry-Anti-γ-Catenin/JUP pAb

Immunohistochemical analysis of paraffin-embedded mouse cancer using anti-γ-Catenin/JUP Rabbit Antibody at 1:200 dilution.
Perform heat mediated antigen retrieval with Tris-EDTA buffer pH 9.0



Immunohistochemistry-Anti-γ-Catenin/JUP pAb

Immunohistochemical analysis of paraffin-embedded rat lung using anti-γ-Catenin/JUP Rabbit Antibody at 1:200 dilution.
Perform heat mediated antigen retrieval with Tris-EDTA buffer pH 9.0



Immunofluorescence-Anti-γ-Catenin/JUP pAb

Immunofluorescence analysis of paraffin-embedded human kidney using anti-γ-Catenin/JUP Rabbit Antibody at 1:200 dilution.
Perform heat mediated antigen retrieval with Tris-EDTA buffer pH 9.0

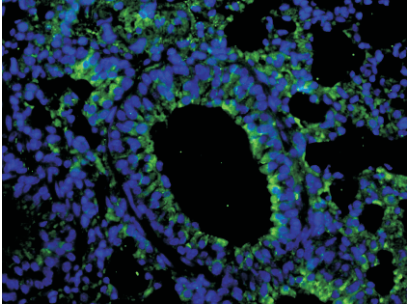
Anti-γ-Catenin/JUP Rabbit pAb



WL04237

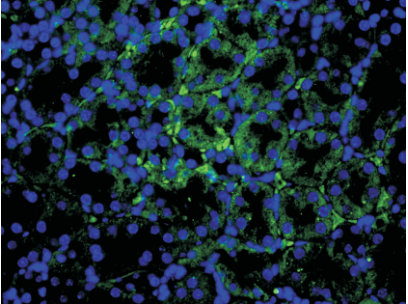
For Research Use Only. Not For Use In Diagnostic Procedures

Product Information



Immunofluorescence-Anti-γ-Catenin/JUP pAb

Immunofluorescence analysis of paraffin-embedded mouse lung using anti-γ-Catenin/JUP Rabbit Antibody at 1:200 dilution.
Perform heat mediated antigen retrieval with Tris-EDTA buffer pH 9.0



Immunofluorescence-Anti-γ-Catenin/JUP pAb

Immunofluorescence analysis of paraffin-embedded mouse kidney using anti-γ-Catenin/JUP Rabbit Antibody at 1:200 dilution.
Perform heat mediated antigen retrieval with Tris-EDTA buffer pH 9.0