

Anti-KAT3B/p300 Rabbit pAb



WL01307

For Research Use Only. Not For Use In Diagnostic Procedures

Product Information

Product name	Anti-KAT3B/p300 Rabbit pAb	
Source	Rabbit	
Species reactivity	Human, Mouse, Rat	
Tested applications	WB	1:1000-1:2000
	IHC	1:100
	IF	1:500
Cellular localization	Cytoplasm. Nucleus	
Pack size	50/100/200/500/1000µl	
Storage	Store at -20°C. Avoid freeze/thaw cycles.	
Storage buffer	Supplied in 20 mM phosphate (pH 7.5), 150 mM NaCl, 100 µg/ml	
	BSA, 50% glycerol and less than 0.02% sodium azide	

General Information

Background	Cyclic AMP-regulated gene expression frequently involves a DNA element designated the cAMP-regulated enhancer (CRE). p300 molecules lacking an intact E1A binding site bypass E1A repression even in the presence of high concentrations of E1A. This gene encodes the adenovirus E1A-associated cellular p300 transcriptional co-activator protein. It functions as histone acetyltransferase that regulates transcription via chromatin remodeling and is important in the processes of cell proliferation and differentiation. Sequence analysis of CBP and p300 has revealed substantial homology, arguing that these proteins are members of a conserved family of co-activators.
Immunogen	Polyclonal antibody is produced by immunizing animals with a synthetic peptide of KAT3B/p300.
Purification	Polyclonal antibody was purified by Protein A affinity chromatography.

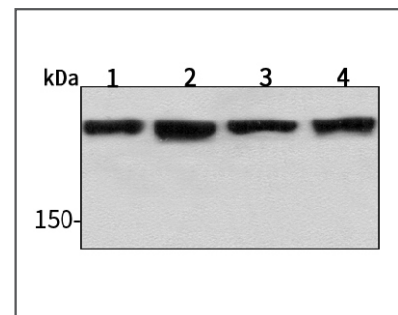
Anti-KAT3B/p300 Rabbit pAb



WL01307

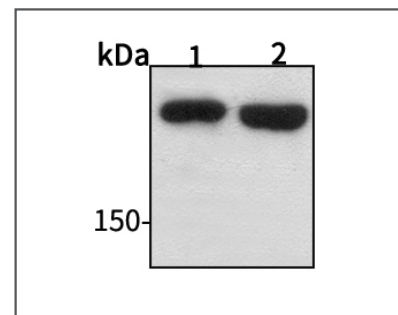
For Research Use Only. Not For Use In Diagnostic Procedures

Product Images



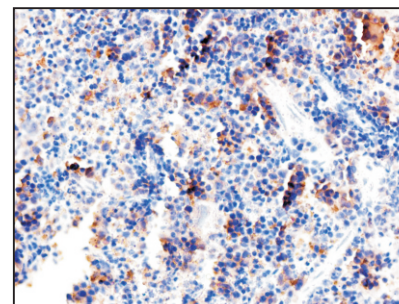
Western blot-Anti-KAT3B/p300 pAb

Lane 1: Human HepG2 cell lysate
 Lane 2: Human BGC-823 cell lysate
 Lane 3: Human MGC-803 cell lysate
 All lanes: Anti-KAT3B/p300 at 1:1000 dilution
 Lysates/proteins at 20-50 µg per lane.
 Predicted band size: 264 kDa
 Observed band size: 300 kDa



Western blot-Anti-KAT3B/p300 pAb

Lane 1: Mouse brain tissue lysate
 Lane 2: Rat lung tissue lysate
 All lanes: Anti-KAT3B/p300 at 1:1000 dilution
 Lysates/proteins at 20-50 µg per lane.
 Predicted band size: 264 kDa
 Observed band size: 300 kDa



Immunohistochemistry-Anti-KAT3B/p300 pAb

Immunohistochemical analysis of paraffin-embedded mouse spleen using anti-KAT3B/p300 Rabbit Antibody at 1:100 dilution.
 Perform heat mediated antigen retrieval with Tris-EDTA buffer pH 9.0

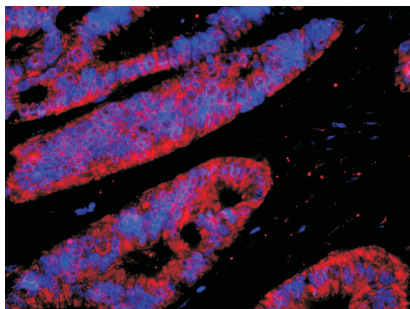
Anti-KAT3B/p300 Rabbit pAb



WL01307

For Research Use Only. Not For Use In Diagnostic Procedures

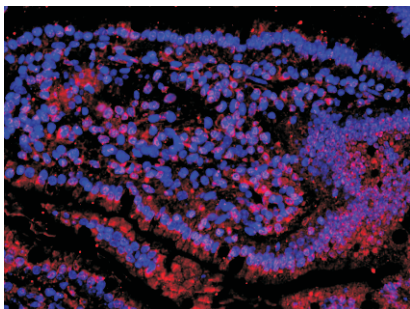
Product Information



Immunofluorescence-Anti-KAT3B/p300 pAb

Immunofluorescence analysis of paraffin-embedded human colon cancer using anti-KAT3B/p300 Rabbit Antibody at 1:500 dilution.

Perform heat mediated antigen retrieval with Tris-EDTA buffer pH 9.0



Immunofluorescence-Anti-KAT3B/p300 pAb

Immunofluorescence analysis of paraffin-embedded mouse intestine using anti-KAT3B/p300 Rabbit Antibody at 1:500 dilution.

Perform heat mediated antigen retrieval with Tris-EDTA buffer pH 9.0