

Anti-PLCy1 Rabbit pAb



WL01601

For Research Use Only. Not For Use In Diagnostic Procedures

Product Information

Product name	Anti-PLCy1 Rabbit pAb	
Source	Rabbit	
Species reactivity	Human, Mouse, Rat	
Tested applications	WB	1:1000-1:2000
	IHC	1:500
	IF	1:500
Cellular localization	Cell projection, lamellipodium. Cell projection, ruffle	
Pack size	50/100/200/500/1000μl	
Storage	Store at -20°C. Avoid freeze/thaw cycles.	
Storage buffer	Supplied in 20 mM phosphate (pH 7.5), 150 mM NaCl, 100 μg/ml	
	BSA, 50% glycerol and less than 0.02% sodium azide	

General Information

Background	The protein encoded by this gene catalyzes the formation of inositol 1,4,5-trisphosphate and diacylglycerol from phosphatidylinositol 4,5-bisphosphate. Phosphoinositide-specific phospholipase C (PLC) plays a crucial role in the initiation of receptor mediated signal transduction through the generation of the two second messengers, inositol 1,4,5-trisphosphate and diacylglycerol from phosphatidylinositol 4,5-bisphosphate. There are many mammalian PLC isozymes. PLCγ1 is widely distributed in bronchiolar epithelium, type I and II pneumocytes and fibroblasts of the interstitial tissue. PLCγ1 is rapidly activated in response to growth factor stimulation and plays an important role in regulating cell proliferation and differentiation. It may also have a protective function during cellular response to oxidative stress.
Immunogen	Polyclonal antibody is produced by immunizing animals with a synthetic peptide of PLCγ1.
Purification	Polyclonal antibody was purified by protein A affinity chromatography.

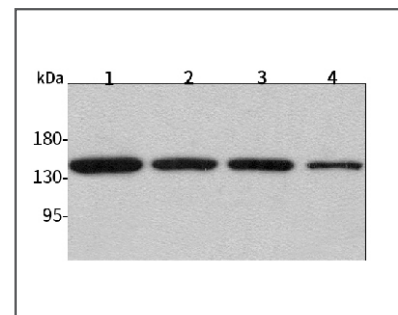
Anti-PLCy1 Rabbit pAb



WL01601

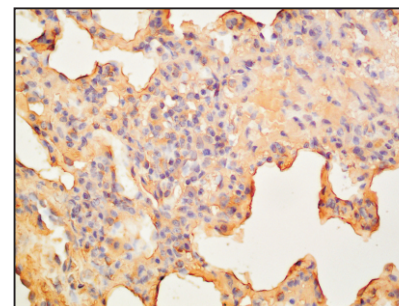
For Research Use Only. Not For Use In Diagnostic Procedures

Product Images



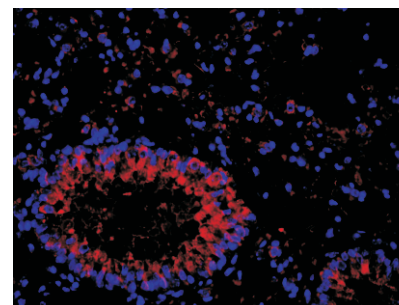
Western blot-Anti-PLCy1 pAb

Lane 1: Human HepG2 cell lysate
Lane 2: Human Hela cell lysate
Lane 3: Human BGC-823 cell lysate
Lane 4: Human MGC-803 cell lysate
All lanes: Anti-PLCy1 at 1:1000 dilution
 Lysates/proteins at 20-50 μg per lane.
 Predicted band size: 148 kDa
 Observed band size: 149 kDa



Immunohistochemistry-Anti-PLCy1 pAb

Immunohistochemical analysis of paraffin-embedded rat lung using anti-PLCy1 Rabbit Antibody at 1:500 dilution.
 Perform heat mediated antigen retrieval with Tris-EDTA buffer pH 9.0



Immunofluorescence-Anti-PLCy1 pAb

Immunofluorescence analysis of paraffin-embedded mouse lung using anti-PLCy1 Rabbit Antibody at 1:500 dilution.
 Perform heat mediated antigen retrieval with Tris-EDTA buffer pH 9.0

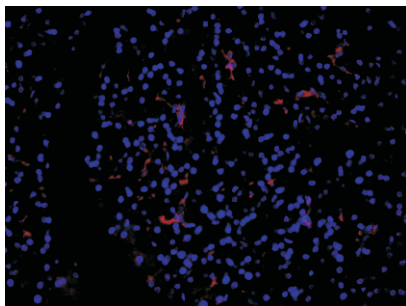
Anti-PLCy1 Rabbit pAb



WL01601

For Research Use Only. Not For Use In Diagnostic Procedures

Product Information



Immunofluorescence-Anti-PLCy1 pAb

Immunofluorescence analysis of paraffin-embedded rat pancreas using anti-PLCy1 Rabbit Antibody at 1:500 dilution.

Perform heat mediated antigen retrieval with Tris-EDTA buffer pH 9.0