

Anti-KMT6/EZH2 Rabbit pAb



WL00795

For Research Use Only. Not For Use In Diagnostic Procedures

Product Information

Product name	Anti-KMT6/EZH2 Rabbit pAb	
Source	Rabbit	
Species reactivity	Human, Mouse, Rat	
Tested applications	WB	1:1000-1:2000
	IHC	1:100-1:400
Cellular localization	Nucleus	
Pack size	50/100/200/500/1000μl	
Storage	Store at -20°C. Avoid freeze/thaw cycles.	
Storage buffer	Supplied in 20 mM phosphate (pH 7.5), 150 mM NaCl, 100 μg/ml	
	BSA, 50% glycerol and less than 0.02% sodium azide	

General Information

Background	It encodes a member of the Polycomb-group (PcG) family. PcG family members form multimeric protein complexes, which are involved in maintaining the transcriptional repressive state of genes over successive cell generations. Its protein may play a role in the hematopoietic and central nervous systems. Ezh2 is deregulated in various tumor types, and its role, both as a primary effector and as a mediator of tumorigenesis, has become a subject of increased interest.
Immunogen	Polyclonal antibody is produced by immunizing animals with a synthetic peptide of KMT6/EZH2.
Purification	Polyclonal antibody was purified by Protein A affinity chromatography.

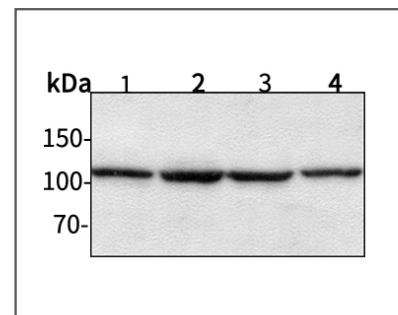
Anti-KMT6/EZH2 Rabbit pAb



WL00795

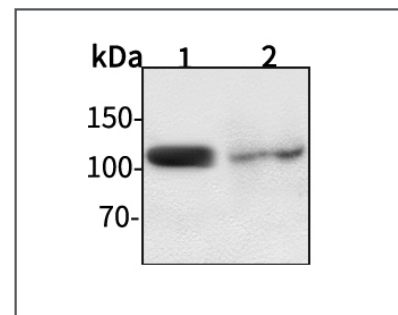
For Research Use Only. Not For Use In Diagnostic Procedures

Product Images



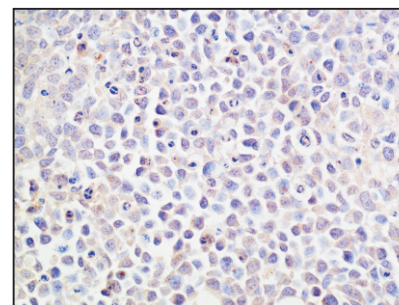
Western blot-Anti-KMT6/EZH2 pAb

Lane 1: Human HepG2 cell lysate
 Lane 2: Human Hela cell lysate
 Lane 3: Human BGC-823 cell lysate
 Lane 4: Human MGC-803 cell lysate
 All lanes: Anti-KMT6/EZH2 at 1:1000 dilution
 Lysates/proteins at 20-50 μg per lane.
 Predicted band size: 85 kDa
 Observed band size: 85-102 kDa



Western blot-Anti-KMT6/EZH2 pAb

Lane 1: Mouse heart tissue lysate
 Lane 2: Rat testicle tissue lysate
 All lanes: Anti-KMT6/EZH2 at 1:1000 dilution
 Lysates/proteins at 20-50 μg per lane.
 Predicted band size: 85 kDa
 Observed band size: 85-102 kDa



Immunohistochemistry-Anti-KMT6/EZH2 pAb

Immunohistochemical analysis of paraffin-embedded human BGC-823 cell tumorigenic using anti-KMT6/EZH2 Rabbit Antibody at 1:150 dilution. Perform heat mediated antigen retrieval with Tris-EDTA buffer pH 9.0

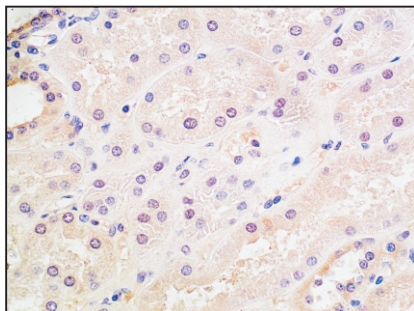
Anti-KMT6/EZH2 Rabbit pAb



WL00795

For Research Use Only. Not For Use In Diagnostic Procedures

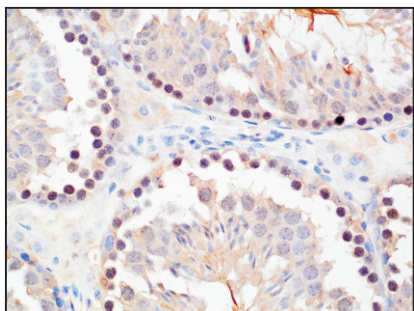
Product Information



Immunohistochemistry-Anti-KMT6/EZH2 pAb

Immunohistochemical analysis of paraffin-embedded human kidney cancer using anti-KMT6/EZH2 Rabbit Antibody at 1:200 dilution.

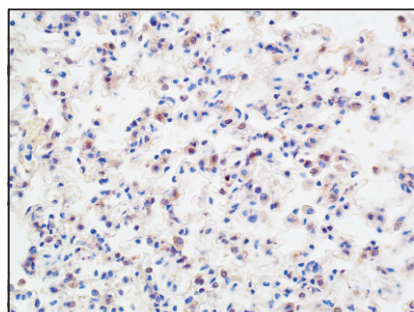
Perform heat mediated antigen retrieval with Tris-EDTA buffer pH 9.0



Immunohistochemistry-Anti-KMT6/EZH2 pAb

Immunohistochemical analysis of paraffin-embedded mouse testicle using anti-KMT6/EZH2 Rabbit Antibody at 1:200 dilution.

Perform heat mediated antigen retrieval with Tris-EDTA buffer pH 9.0



Immunohistochemistry-Anti-KMT6/EZH2 pAb

Immunohistochemical analysis of paraffin-embedded rat lung using anti-KMT6/EZH2 Rabbit Antibody at 1:200 dilution.

Perform heat mediated antigen retrieval with Tris-EDTA buffer pH 9.0