

## Anti-PLK1 Rabbit pAb



WL04381

For Research Use Only. Not For Use In Diagnostic Procedures

## Product Information

<b>Product name</b>	Anti-PLK1 Rabbit pAb		
<b>Source</b>	Rabbit		
<b>Species reactivity</b>	Human, Mouse, Rat		
<b>Tested applications</b>	Western blot	1:500-1:1000	
	Immunohistochemistry	1:100-1:400	
	Immunofluorescence	1:100-1:400	
<b>Molecular Wt.</b>	67 kDa		
<b>Cellular localization</b>	Centromere, Chromosome, Cytoplasm, Cytoskeleton, Kinetochore, Nucleus.		
<b>Pack size</b>	50/100/200/500/1000μl		
<b>Storage</b>	Store at -20°C. <b>Avoid freeze/thaw cycles.</b>		
<b>Storage buffer</b>	Supplied in 20 mM phosphate (pH 7.5), 150 mM NaCl, 100 μg/ml		
	BSA, 50% glycerol and less than 0.02% sodium azide		

## General Information

<b>Background</b>	Plk (for polo-like kinase) encodes a Ser/Thr kinase that is closely gene belongs to the CDC5/Polo subfamily. It is highly expressed during mitosis and elevated levels are found in many different types of cancer. Plk expression is detectable in mitotically active tissues such as colon and placenta, as well as in tumors of various origins.
<b>Immunogen</b>	Polyclonal antibody is produced by immunizing animals with a synthetic peptide of PLK1.
<b>Purification</b>	Polyclonal antibody was purified by immunogen affinity chromatography.

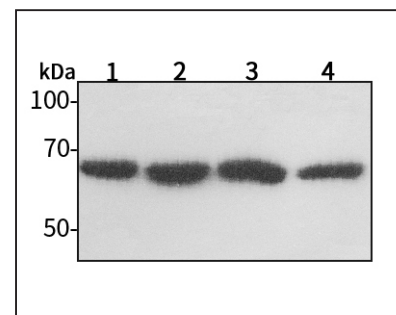
## Anti-PLK1 Rabbit pAb



WL04381

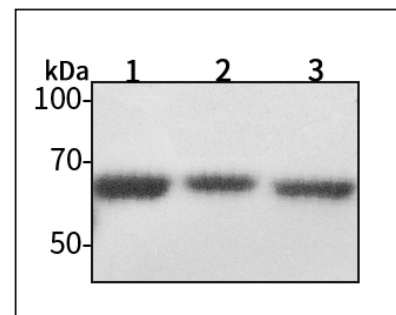
For Research Use Only. Not For Use In Diagnostic Procedures

## Product Images



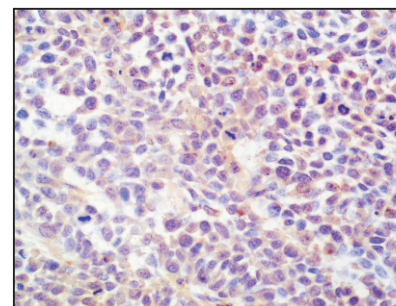
Western blot-Anti-PLK1 pAb

Lane 1: Human HEK-293 cell lysate 30μg  
 Lane 2: Human A549 cell lysate 30μg  
 Lane 3: Human HUVEC cell lysate 30μg  
 Lane 4: Human SW480 cell lysate 30μg  
 Separation gel: 8% polyacrylamide  
 Electrophoresis: 100V, 4°C, 3h  
 Transmembrane: 100V, 4°C, 1h  
 Blocking: 5% w/v nonfat dry milk, 1× TBST, at RT with gentle shaking  
 Primary antibody: 1:1000 in blocking buffer, 4°C, overnight  
 Secondary antibody (WLA023a) : 1:5000-1:10000, 45min  
 Detection: ECL, 30s-2min



Western blot-Anti-PLK1 pAb

Lane 1: Mouse liver tissue lysate 30μg  
 Lane 2: Rat colon tissue lysate 30μg  
 Lane 3: Rat stomach tissue lysate 30μg  
 Separation gel: 8% polyacrylamide  
 Electrophoresis: 100V, 4°C, 3h  
 Transmembrane: 100V, 4°C, 1h  
 Blocking: 5% w/v nonfat dry milk, 1× TBST, at RT with gentle shaking  
 Primary antibody: 1:1000 in blocking buffer, 4°C, overnight  
 Secondary antibody (WLA023a) : 1:5000-1:10000, 45min  
 Detection: ECL, 30s-2min



Immunohistochemistry-Anti-PLK1 pAb

Sample: Human BGC-823 cell tumorigenic tissue  
 Antigen retrieval: pH 9.0 Tris-EDTA buffer  
 Primary antibody: 1:200, 4°C, overnight  
 Secondary antibody-Biotin: 1:150, 37°C, 1h  
 Streptavidin-HRP: 1:200, 37°C, 30min  
 Visualization: DAB

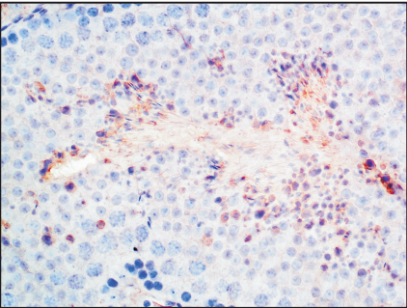
# Anti-PLK1 Rabbit pAb



For Research Use Only. Not For Use In Diagnostic Procedures

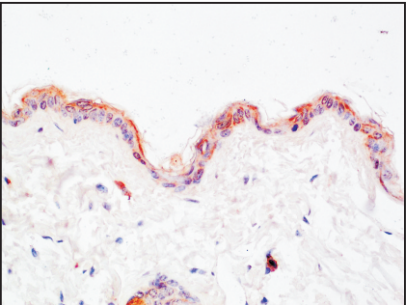
WL04381

## Product Information



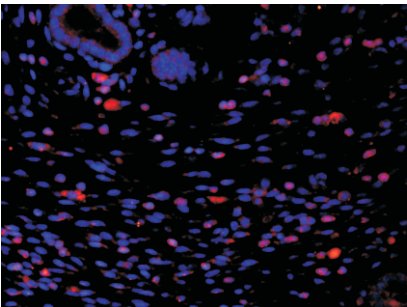
### Immunohistochemistry-Anti-PLK1 pAb

**Sample:** Mouse testicle tissue  
**Antigen retrieval:** pH 9.0 Tris-EDTA buffer  
**Primary antibody:** 1:200, 4°C, overnight  
**Secondary antibody-Biotin:** 1:150, 37°C, 1h  
**Streptavidin-HRP:** 1:200, 37°C, 30min  
**Visualization:** DAB



### Immunohistochemistry-Anti-PLK1 pAb

**Sample:** Rat skin tissue  
**Antigen retrieval:** pH 9.0 Tris-EDTA buffer  
**Primary antibody:** 1:200, 4°C, overnight  
**Secondary antibody-Biotin:** 1:150, 37°C, 1h  
**Streptavidin-HRP:** 1:200, 37°C, 30min  
**Visualization:** DAB



### Immunofluorescence-Anti-PLK1 pAb

**Sample:** Mouse uterus tissue  
**Primary antibody:** 1:200, 4°C, overnight  
**Secondary antibody-CY3:** 1:200, at room temperature, 1h