

Anti-LTBR Rabbit pAb



WL04950

For Research Use Only. Not For Use In Diagnostic Procedures

Product Information

Product name	Anti-LTBR Rabbit pAb		
Source	Rabbit		
Species reactivity	Human, Mouse, Rat		
Tested applications	WB	1:1000-1:2000	
Pack size	50/100/200/500/1000μl		
Storage	Store at -20°C. Avoid freeze/thaw cycles.		
Storage buffer	Supplied in 20 mM phosphate (pH 7.5), 150 mM NaCl, 100 μg/ml BSA, 50% glycerol and less than 0.02% sodium azide		

General Information

Background	The tumor necrosis factor receptor superfamily. Tumor necrosis factor (TNF) is a pleiotropic cytokine whose function is mediated by two distinct cell surface receptors, designated TNF-R1 and TNF-R2, which are expressed on most cell types.
-------------------	--

Immunogen	Polyclonal antibody is produced by immunizing animals with a synthetic peptide of LTBR.
------------------	---

Purification	Polyclonal antibody was purified by Protein A affinity chromatography.
---------------------	--

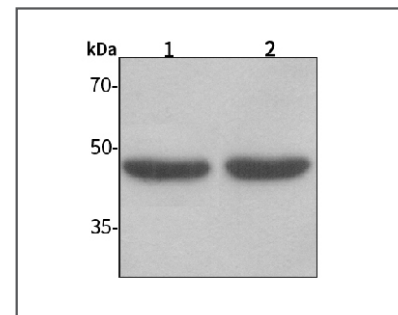
Anti-LTBR Rabbit pAb



WL04950

For Research Use Only. Not For Use In Diagnostic Procedures

Product Images



Western blot-Anti-LTBR pAb

Lane 1: Human MCF-7 cell lysate

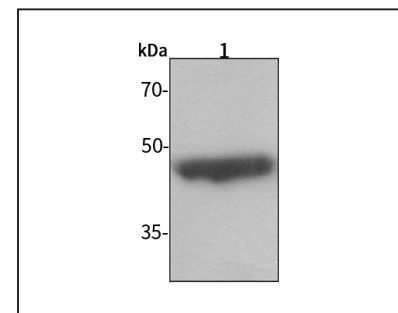
Lane 2: Human HEK-293 cell lysate

All lanes: Anti-LTBR at 1:1000 dilution

Lysates/proteins at 20-50 μg per lane.

Predicted band size: 48 kDa

Observed band size: 48 kDa



Western blot-Anti-LTBR pAb

Lane 1: Mouse kidney tissue lysate

All lanes: Anti-LTBR at 1:1000 dilution

Lysates/proteins at 20-50 μg per lane.

Predicted band size: 48 kDa

Observed band size: 48 kDa