

Anti-Lactoferrin Rabbit pAb



WL01600

For Research Use Only. Not For Use In Diagnostic Procedures

Product Information

Product name	Anti-Lactoferrin Rabbit pAb	
Source	Rabbit	
Species reactivity	Human	
Tested applications	WB	1:1000-1:2000
	IHC	1:100-1:400
	IF	1:500
Cellular localization	Cytoplasm, Nucleus, Secreted	
Pack size	50/100/200/500/1000μl	
Storage	Store at -20°C. Avoid freeze/thaw cycles.	
Storage buffer	Supplied in 20 mM phosphate (pH 7.5), 150 mM NaCl, 100 μg/ml	
	BSA, 50% glycerol and less than 0.02% sodium azide	

General Information

Background	The first function attributed to lactoferrin (Lf), an iron binding protein belonging to the non-immune natural defences, was antimicrobial activity that depended on its capacity to sequester iron. Lactoferrin is found in milk, tears and leukocytes. Lactoferrin also attenuates the pathogenic potential of H. influenzae by proteolytic degradation of the Hap adhesin. While lactoferrin may aid in the transmission of human T cell leukemia virus type 1, lactoferrin inhibits HIV-1 replication at the level of viral fusion and entry into cells.
Immunogen	Polyclonal antibody is produced by immunizing animals with a synthetic peptide of Lactoferrin.
Purification	Polyclonal antibody was purified by Protein A affinity chromatography.

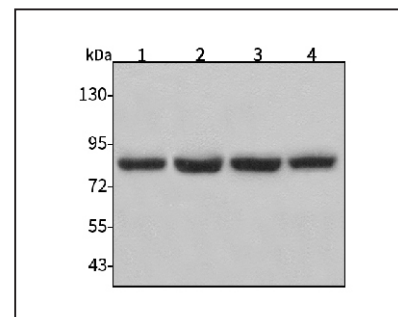
Anti-Lactoferrin Rabbit pAb



WL01600

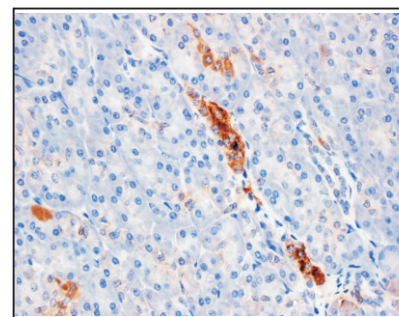
For Research Use Only. Not For Use In Diagnostic Procedures

Product Images



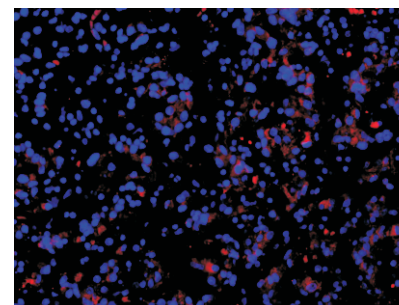
Western blot-Anti-Lactoferrin pAb

Lane 1: Human HepG2 cell lysate
Lane 2: Human Hela cell lysate
Lane 3: Human SGC-7901 cell lysate
Lane 4: Human MCF-7 cell lysate
All lanes: Anti-Lactoferrin at 1:1000 dilution
 Lysates/proteins at 20-50 μg per lane.
 Predicted band size: 79 kDa
 Observed band size: 85 kDa



Immunohistochemistry-Anti-Lactoferrin pAb

Immunohistochemical analysis of paraffin-embedded human pancreatic cancer using anti-Lactoferrin Rabbit Antibody at 1:150 dilution.
 Perform heat mediated antigen retrieval with Tris-EDTA buffer pH 9.0



Immunofluorescence-Anti-Lactoferrin pAb

Immunofluorescence analysis of paraffin-embedded human breast cancer using anti-Lactoferrin Rabbit Antibody at 1:500 dilution.
 Perform heat mediated antigen retrieval with Tris-EDTA buffer pH 9.0

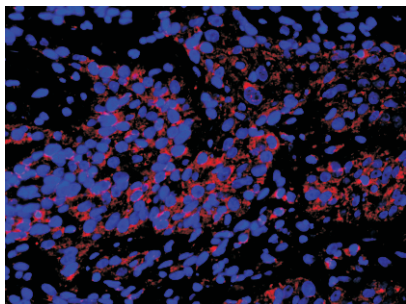
Anti-Lactoferrin Rabbit pAb



For Research Use Only. Not For Use In Diagnostic Procedures

WL01600

Product Information



Immunofluorescence-Anti-Lactoferrin pAb

Immunofluorescence analysis of paraffin-embedded human esophagus cancer using anti-Lactoferrin Rabbit Antibody at 1:500 dilution.

Perform heat mediated antigen retrieval with Tris-EDTA buffer pH 9.0