

## Anti-MERTK Rabbit pAb



WLH4169

For Research Use Only. Not For Use In Diagnostic Procedures

## Product Information

<b>Product name</b>	Anti-MERTK Rabbit pAb	
<b>Source</b>	Rabbit	
<b>Species reactivity</b>	Human, Mouse, Rat	
<b>Tested applications</b>	IHC	1:200-1:400
	IF	1:200
<b>Cellular localization</b>	Membrane	
<b>Pack size</b>	50/100/200/500/1000μl	
<b>Storage</b>	Store at -20°C. <b>Avoid freeze/thaw cycles.</b>	
<b>Storage buffer</b>	Supplied in 20 mM phosphate (pH 7.5), 150 mM NaCl, 100 μg/ml	
	BSA, 50% glycerol and less than 0.02% sodium azide	

## General Information

<b>Background</b>	Proto-oncogene tyrosine-protein kinase MER is an enzyme that in humans is encoded by the MERTK gene. This gene is a member of the MER/AXL/TYRO3 receptor kinase family. MerTK is the mammalian ortholog of the chicken retroviral oncogene product v-Eyk. This protein plays a critical role in macrophage activation, platelet aggregation, clot stability and the efficient removal of apoptotic cells. Mutations in this gene have been associated with disruption of the retinal pigment epithelium (RPE) phagocytosis pathway and onset of autosomal recessive retinitis pigmentosa.
<b>Immunogen</b>	Polyclonal antibody is produced by immunizing animals with a synthetic peptide of MERTK.
<b>Purification</b>	Polyclonal antibody was purified by immunogen affinity chromatography.

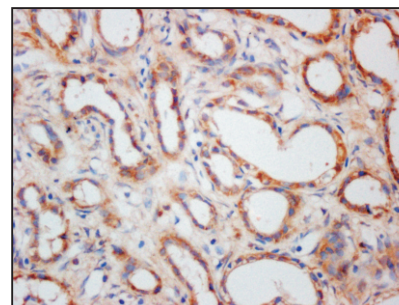
## Anti-MERTK Rabbit pAb



WLH4169

For Research Use Only. Not For Use In Diagnostic Procedures

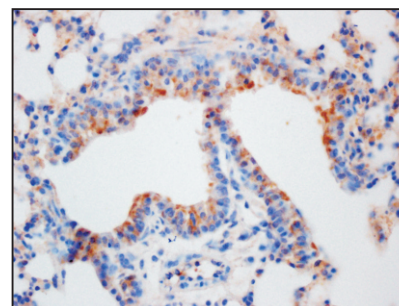
## Product Images



## Immunohistochemistry-Anti-MERTK pAb

Immunohistochemical analysis of paraffin-embedded human kidney using anti-MERTK Rabbit Antibody at 1:200 dilution.

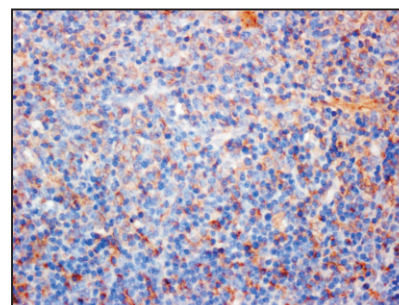
Perform heat mediated antigen retrieval with Tris-EDTA buffer pH 9.0



## Immunohistochemistry-Anti-MERTK pAb

Immunohistochemical analysis of paraffin-embedded mouse lung using anti-MERTK Rabbit Antibody at 1:200 dilution.

Perform heat mediated antigen retrieval with Tris-EDTA buffer pH 9.0



## Immunohistochemistry-Anti-MERTK pAb

Immunohistochemical analysis of paraffin-embedded rat lung using anti-MERTK Rabbit Antibody at 1:200 dilution.

Perform heat mediated antigen retrieval with Tris-EDTA buffer pH 9.0

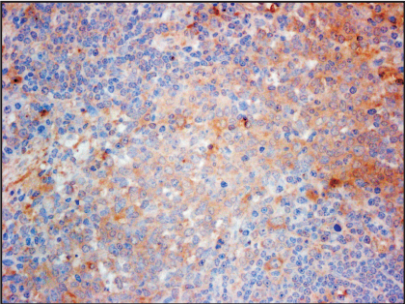
# Anti-MERTK Rabbit pAb



WLH4169

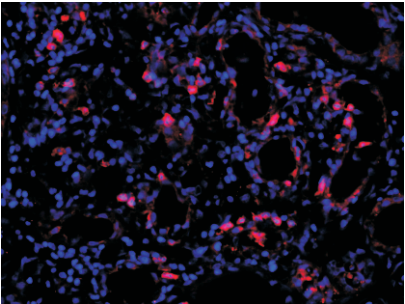
For Research Use Only. Not For Use In Diagnostic Procedures

## Product Information



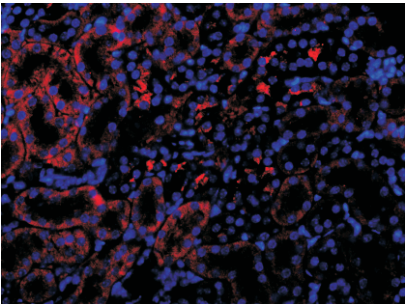
### Immunohistochemistry-Anti-MERTK pAb

Immunohistochemical analysis of paraffin-embedded rat spleen using anti-MERTK Rabbit Antibody at 1:200 dilution.  
Perform heat mediated antigen retrieval with Tris-EDTA buffer pH 9.0



### Immunofluorescence-Anti-MERTK pAb

Immunofluorescence analysis of paraffin-embedded human kidney using anti-MERTK Rabbit Antibody at 1:200 dilution.  
Perform heat mediated antigen retrieval with Tris-EDTA buffer pH 9.0



### Immunofluorescence-Anti-MERTK pAb

Immunofluorescence analysis of paraffin-embedded mouse kidney using anti-MERTK Rabbit Antibody at 1:200 dilution.  
Perform heat mediated antigen retrieval with Tris-EDTA buffer pH 9.0

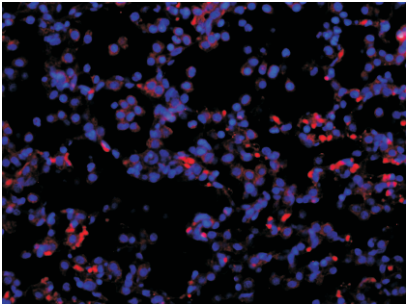
# Anti-MERTK Rabbit pAb



WLH4169

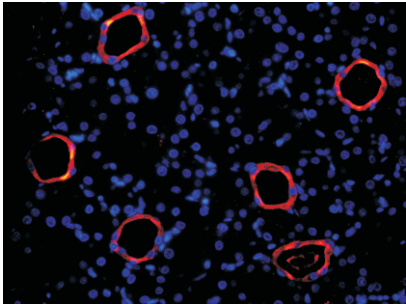
For Research Use Only. Not For Use In Diagnostic Procedures

## Product Images



### Immunofluorescence-Anti-MERTK pAb

Immunofluorescence analysis of paraffin-embedded rat lung using anti-MERTK Rabbit Antibody at 1:200 dilution.  
Perform heat mediated antigen retrieval with Tris-EDTA buffer pH 9.0



### Immunofluorescence-Anti-MERTK pAb

Immunofluorescence analysis of paraffin-embedded rat kidney using anti-MERTK Rabbit Antibody at 1:200 dilution.  
Perform heat mediated antigen retrieval with Tris-EDTA buffer pH 9.0