

Anti-LRP1 Rabbit pAb



WL03211

For Research Use Only. Not For Use In Diagnostic Procedures

Product Information

Product name	Anti-LRP1 Rabbit pAb	
Source	Rabbit	
Species reactivity	Human, Mouse, Rat	
Tested applications	WB	1:1000-1:2000
	IHC	1:150
	IF	1:500
Cellular localization	Cell membrane, Coated pit, Cytoplasm, Golgi apparatus, Nucleus	
Pack size	50/100/200/500/1000μl	
Storage	Store at -20°C. Avoid freeze/thaw cycles.	
Storage buffer	Supplied in 20 mM phosphate (pH 7.5), 150 mM NaCl, 100 μg/ml	
	BSA, 50% glycerol and less than 0.02% sodium azide	

General Information

Background	LRP1 encodes a member of the low-density lipoprotein receptor family of proteins. The encoded preproprotein is proteolytically processed by furin to generate 515 kDa and 85 kDa subunits that form the mature receptor. Proper folding and trafficking of LRP1 is facilitated by the receptor-associated protein (RAP), a molecular chaperone. The uptake of all known ligands through LRP1 can be blocked by RAP, which induces a conformational change in the receptor that renders it unable to bind ligands. LRP1, which is expressed in brain, liver and lung, is also implicated in Alzheimer's disease (AD), as the human LRP gene localizes to a potential AD locus on chromosome 12.
Immunogen	Polyclonal antibody is produced by immunizing animals with a synthetic peptide of LRP1.
Purification	Polyclonal antibody was purified by Protein A affinity chromatography.

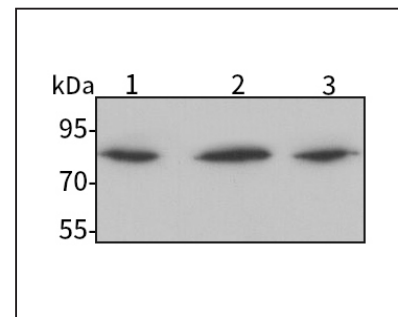
Anti-LRP1 Rabbit pAb



WL03211

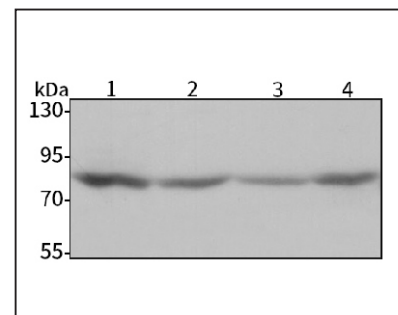
For Research Use Only. Not For Use In Diagnostic Procedures

Product Images



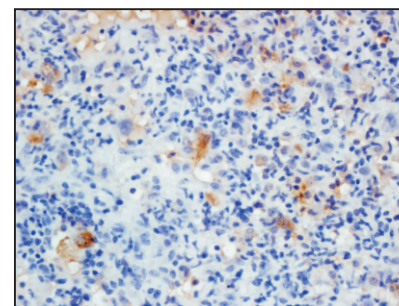
Western blot-Anti-LRP1 pAb

Lane 1: Human HepG2 cell lysate
 Lane 2: Human Hela cell lysate
 Lane 3: Human SH-SY5Y cell lysate
 All lanes: Anti-LRP1 at 1:1000 dilution
 Lysates/proteins at 20-50 μg per lane.
 Predicted band size: 505 kDa
 Observed band size: 85-90 kDa



Western blot-Anti-LRP1 pAb

Lane 1: Mouse lung tissue lysate
 Lane 2: Mouse liver tissue lysate
 Lane 3: Rat liver tissue lysate
 Lane 4: Rat lung tissue lysate
 All lanes: Anti-LRP1 at 1:1000 dilution
 Lysates/proteins at 20-50 μg per lane.
 Predicted band size: 505 kDa
 Observed band size: 85-90 kDa



Immunohistochemistry-Anti-LRP1 pAb

Immunohistochemical analysis of paraffin-embedded mouse lung using anti-LRP1 Rabbit Antibody at 1:150 dilution.
 Perform heat mediated antigen retrieval with Tris-EDTA buffer pH 9.0

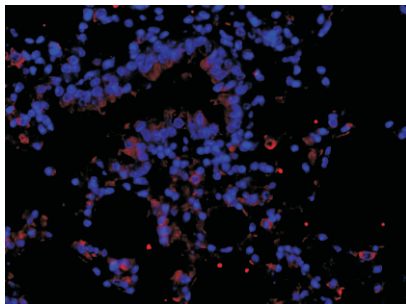
Anti-LRP1 Rabbit pAb



WL03211

For Research Use Only. Not For Use In Diagnostic Procedures

Product Information



Immunofluorescence-Anti-LRP1 pAb

Immunofluorescence analysis of paraffin-embedded mouse lung using anti-LRP1 Rabbit Antibody at 1:500 dilution.

Perform heat mediated antigen retrieval with Tris-EDTA buffer pH 9.0