

Anti-LaminA Rabbit pAb



WL04932

For Research Use Only. Not For Use In Diagnostic Procedures

Product Information

Product name	Anti-LaminA Rabbit pAb
Source	Rabbit
Species reactivity	Human, Mouse, Rat
Tested applications	WB 1:500-1:1000
Pack size	50/100/200/500/1000μl
Storage	Store at -20°C. Avoid freeze/thaw cycles.
Storage buffer	Supplied in 20 mM phosphate (pH 7.5), 150 mM NaCl, 100 μg/ml BSA, 50% glycerol and less than 0.02% sodium azide

General Information

Background

Lamin A/C is also named as LMNA or LMN1. The lamin family of proteins make up the matrix and are highly conserved in evolution. During mitosis, the lamina matrix is reversibly disassembled as the lamin proteins are phosphorylated. Lamin proteins are thought to be involved in nuclear stability, chromatin structure, and gene expression. Mutations in this gene lead to several diseases: Emery-Dreifuss muscular dystrophy, familial partial lipodystrophy, limb-girdle muscular dystrophy, dilated cardiomyopathy, Charcot-Marie-Tooth disease, and Hutchinson-Gilford progeria syndrome.

Immunogen

Polyclonal antibody is produced by immunizing animals with a synthetic peptide of LaminA.

Purification

Polyclonal antibody was purified by immunogen affinity chromatography.

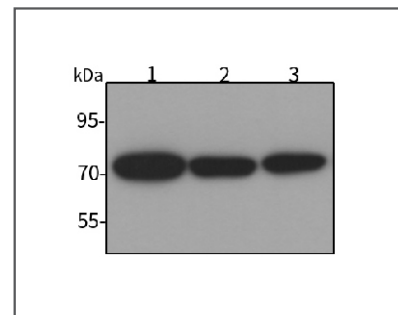
Anti-LaminA Rabbit pAb



WL04932

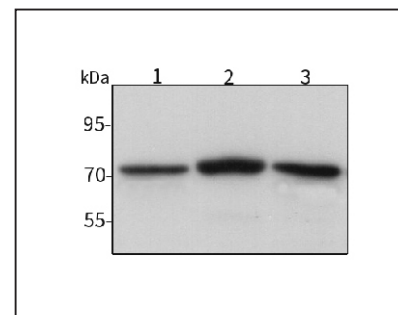
For Research Use Only. Not For Use In Diagnostic Procedures

Product Images



Western blot-Anti-LaminA pAb

Lane 1: Human HeLa cell lysate
 Lane 2: Human HUVEC cell lysate
 Lane 3: Human HEK-293 cell lysate
 All lanes: Anti-LaminA at 1:1000 dilution
 Lysates/proteins at 20-50 μg per lane.
 Predicted band size: 70 kDa
 Observed band size: 70 kDa



Western blot-Anti-LaminA pAb

Lane 1: Mouse kidney tissue lysate
 Lane 2: Mouse heart tissue lysate
 Lane 3: Rat heart tissue lysate
 All lanes: Anti-LaminA at 1:1000 dilution
 Lysates/proteins at 20-50 μg per lane.
 Predicted band size: 70 kDa
 Observed band size: 70 kDa