

Anti-NM23A Rabbit pAb



WLH4588

For Research Use Only. Not For Use In Diagnostic Procedures

Product Information

Product name	Anti-NM23A Rabbit pAb		
Source	Rabbit		
Species reactivity	Human, Mouse, Rat		
Tested applications	WB	1:500-1:1000	
	IHC	1:100-1:400	
	IF	1:100-1:400	
Cellular localization	Cytoplasm. Nucleus		
Pack size	50/100/200/500/1000µl		
Storage	Store at -20°C. Avoid freeze/thaw cycles.		
Storage buffer	Supplied in 20 mM phosphate (pH 7.5), 150 mM NaCl, 100 µg/ml		
	BSA, 50% glycerol and less than 0.02% sodium azide		

General Information

Background	NME1 is also named as NDPKA(Nucleoside diphosphate kinase A), NM23(Metastasis inhibition factor nm23), GAAD(Granzyme A-activated DNase) and belongs to the NDK family. It is a major role in the synthesis of nucleoside triphosphates other than ATP and required for neural development including neural patterning and cell fate determination.
Immunogen	Polyclonal antibody is produced by immunizing animals with a synthetic peptide of NM23A.
Purification	Polyclonal antibody was purified by immunoge affinity chromatography.

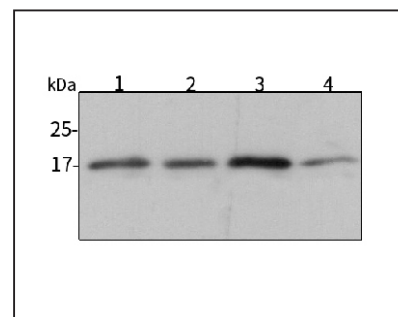
Anti-NM23A Rabbit pAb



WLH4588

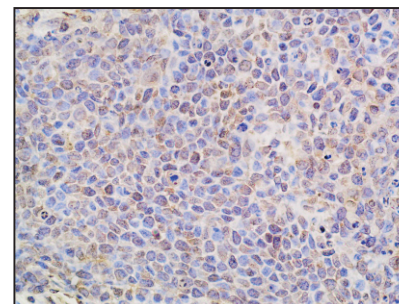
For Research Use Only. Not For Use In Diagnostic Procedures

Product Images



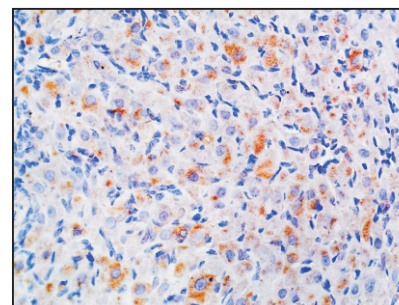
Western blot-Anti-NM23A pAb

Lane 1: Human Hela cell lysate
 Lane 2: Human HEK-293 cell lysate
 Lane 3: Human HCT116 cell lysate
 Lane 4: Human MDA-MB-231 cell lysate
 All lanes: Anti-NM23A at 1:1000 dilution
 Lysates/proteins at 20-50 µg per lane.
 Predicted band size: 17 kDa
 Observed band size: 17 kDa



Immunohistochemistry-Anti-NM23A pAb

Immunohistochemical analysis of paraffin-embedded human BGC-823 cell tumorigenic tissue using anti-NM23A Rabbit Antibody at 1:200 dilution. Perform heat mediated antigen retrieval with Tris-EDTA buffer pH 9.0



Immunohistochemistry-Anti-NM23A pAb

Immunohistochemical analysis of paraffin-embedded rat ovary using anti-NM23A Rabbit Antibody at 1:200 dilution. Perform heat mediated antigen retrieval with Tris-EDTA buffer pH 9.0

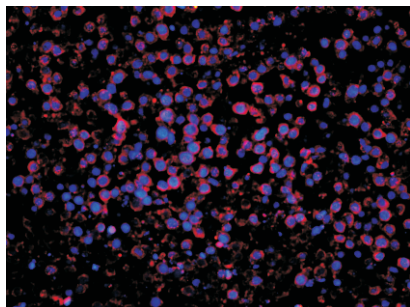
Anti-NM23A Rabbit pAb



WLH4588

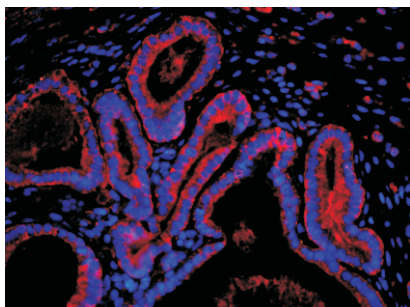
For Research Use Only. Not For Use In Diagnostic Procedures

Product Information



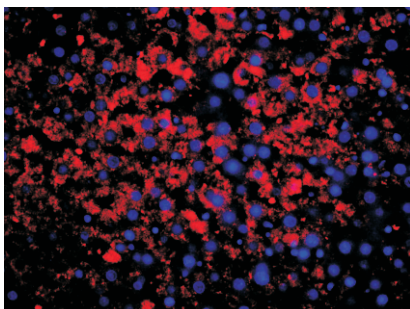
Immunofluorescence-Anti-NM23A pAb

Immunofluorescence analysis of paraffin-embedded human BGC-823 cell tumorigenic tissue using anti-NM23A Rabbit Antibody at 1:200 dilution.
Perform heat mediated antigen retrieval with Tris-EDTA buffer pH 9.0



Immunofluorescence-Anti-NM23A pAb

Immunofluorescence analysis of paraffin-embedded mouse uterus using anti-NM23A Rabbit Antibody at 1:200 dilution.
Perform heat mediated antigen retrieval with Tris-EDTA buffer pH 9.0



Immunofluorescence-Anti-NM23A pAb

Immunofluorescence analysis of paraffin-embedded rat liver using anti-NM23A Rabbit Antibody at 1:200 dilution.
Perform heat mediated antigen retrieval with Tris-EDTA buffer pH 9.0