

Anti-AKT1 Rabbit pAb



WL01652

For Research Use Only. Not For Use In Diagnostic Procedures

Product Information

Product name	Anti-AKT1 Rabbit pAb	
Source	Rabbit	
Species reactivity	Human, Mouse, Rat	
Tested applications	WB	1:500-1:1000
	IHC	1:150-1:300
	IF	1:150
Cellular localization	Cytoplasm. Nucleus. Cell membrane	
Pack size	50/100/200/500/1000μl	
Storage	Store at -20°C. Avoid freeze/thaw cycles.	
Storage buffer	Supplied in 20 mM phosphate (pH 7.5), 150 mM NaCl, 100 μg/ml	
	BSA, 50% glycerol and less than 0.02% sodium azide	

General Information

Background	The serine-threonine protein kinase encoded by the AKT1 gene is catalytically inactive in serum-starved primary and immortalized fibroblasts. AKT1 and the related AKT2 are activated by platelet-derived growth factor. The activation is rapid and specific, and it is abrogated by mutations in the pleckstrin homology domain of AKT1. It was shown that the activation occurs through phosphatidylinositol 3-kinase. In the developing nervous system AKT is a critical mediator of growth factor-induced neuronal survival. Survival factors can suppress apoptosis in a transcription-independent manner by activating the serine/threonine kinase AKT1, which then phosphorylates and inactivates components of the apoptotic machinery.
Immunogen	Polyclonal antibody is produced by immunizing animals with a synthetic peptide of AKT1.
Purification	Polyclonal antibody was purified by immunogen affinity chromatography.

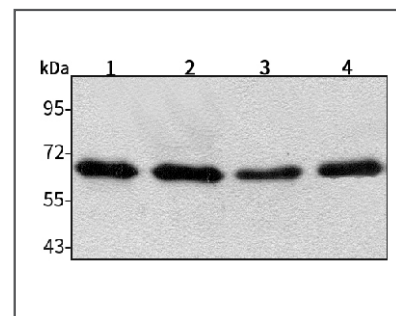
Anti-AKT1 Rabbit pAb



WL01652

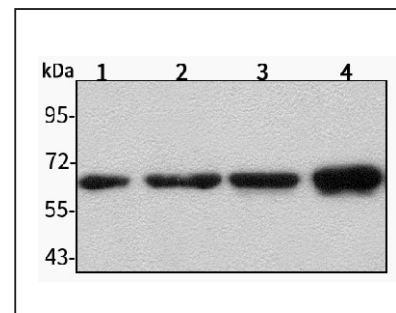
For Research Use Only. Not For Use In Diagnostic Procedures

Product Images



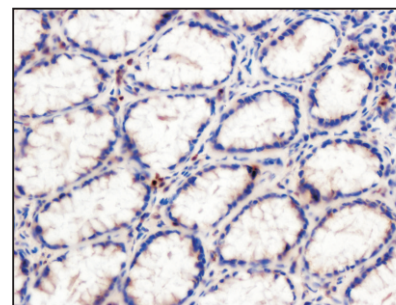
Western blot-Anti-AKT1 pAb

Lane 1: Human HepG2 cell lysate
 Lane 2: Human Hela cell lysate
 Lane 3: Human BGC-823 cell lysate
 Lane 4: Human MGC-803 cell lysate
 All lanes: Anti-AKT1 at 1:1000 dilution
 Lysates/proteins at 20-50 μg per lane.
 Predicted band size: 56 kDa
 Observed band size: 56 kDa



Western blot-Anti-AKT1 pAb

Lane 1: Mouse lung tissue lysate
 Lane 2: Mouse heart tissue lysate
 Lane 3: Rat colon tissue lysate
 Lane 4: Rat skin tissue lysate
 All lanes: Anti-AKT1 at 1:1000 dilution
 Lysates/proteins at 20-50 μg per lane.
 Predicted band size: 56 kDa
 Observed band size: 56 kDa



Immunohistochemistry-Anti-AKT1 pAb

Immunohistochemical analysis of paraffin-embedded human colon cancer using anti-AKT1 Rabbit Antibody at 1:150 dilution.
 Perform heat mediated antigen retrieval with Tris-EDTA buffer pH 9.0

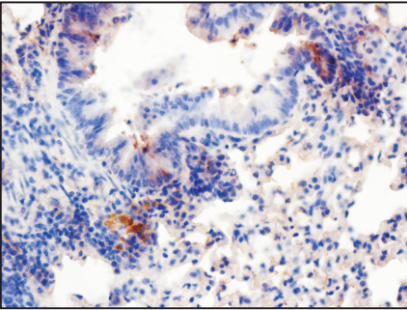
Anti-AKT1 Rabbit pAb



WL01652

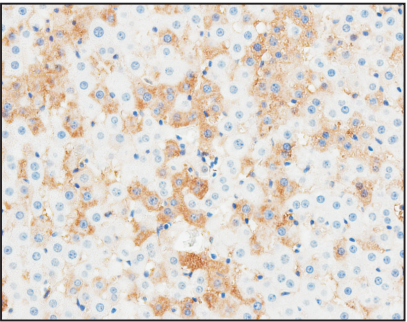
For Research Use Only. Not For Use In Diagnostic Procedures

Product Information



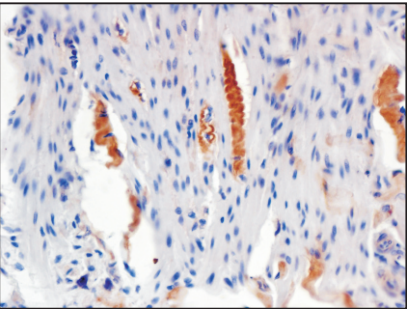
Immunohistochemistry-Anti-AKT1 pAb

Immunohistochemical analysis of paraffin-embedded mouse lung using anti-AKT1 Rabbit Antibody at 1:150 dilution.
Perform heat mediated antigen retrieval with Tris-EDTA buffer pH 9.0



Immunohistochemistry-Anti-AKT1 pAb

Immunohistochemical analysis of paraffin-embedded rat liver using anti-AKT1 Rabbit Antibody at 1:150 dilution.
Perform heat mediated antigen retrieval with Tris-EDTA buffer pH 9.0



Immunohistochemistry-Anti-AKT1 pAb

Immunohistochemical analysis of paraffin-embedded rat stomach using anti-AKT1 Rabbit Antibody at 1:150 dilution.
Perform heat mediated antigen retrieval with Tris-EDTA buffer pH 9.0

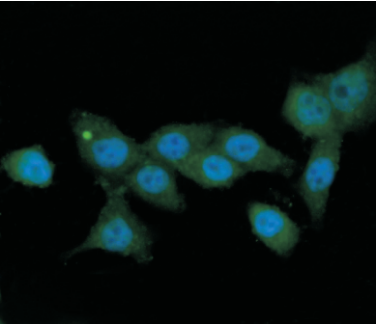
Anti-AKT1 Rabbit pAb



WL01652

For Research Use Only. Not For Use In Diagnostic Procedures

Product Images



Immunofluorescence-Anti-AKT1 pAb

Immunofluorescence analysis of paraffin-embedded human HeLa cell using anti-AKT1 Rabbit Antibody at 1:150 dilution.
Perform heat mediated antigen retrieval with Tris-EDTA buffer pH 9.0