

Anti-Laptm5 Rabbit pAb



WL05612

For Research Use Only. Not For Use In Diagnostic Procedures

Product Information

Product name	Anti-Laptm5 Rabbit pAb	
Source	Rabbit	
Species reactivity	Human, Mouse, Rat	
Tested applications	WB	1:500-1:1000
	IHC	1:50-1:200
Cellular localization	Lysosome, Membrane.	
Pack size	50/100/200/500/1000μl	
Storage	Store at -20°C. <b>Avoid freeze/thaw cycles.</b>	
Storage buffer	Supplied in 20 mM phosphate (pH 7.5), 150 mM NaCl, 100 μg/ml	
	BSA, 50% glycerol and less than 0.02% sodium azide	

General Information

Background	This gene encodes a transmembrane receptor that is associated with lysosomes. The encoded protein, also known as E3 protein, may play a role in hematopoiesis.
Immunogen	Polyclonal antibody is produced by immunizing animals with a synthetic peptide of Laptm5.
Purification	Polyclonal antibody was purified by immunogen affinity chromatography.

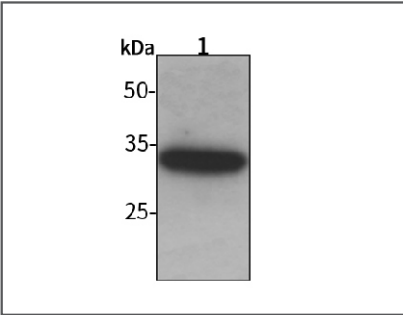
Anti-Laptm5 Rabbit pAb



WL05612

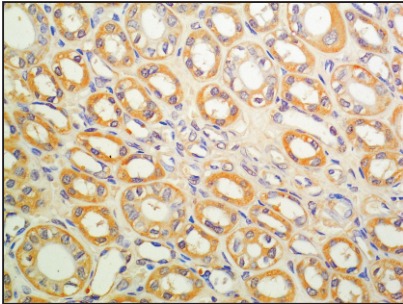
For Research Use Only. Not For Use In Diagnostic Procedures

Product Images



Western blot-Anti-Laptm5 pAb

Lane 1: Mouse brain tissue lysate  
All lanes: Anti-Laptm5 at 1:1000 dilution  
Lysates/proteins at 20-50 μg per lane.  
Predicted band size: 30 kDa  
Observed band size: 30 kDa



Immunohistochemistry-Anti-Laptm5 pAb

Immunohistochemical analysis of paraffin-embedded human kidney cancer using anti-Laptm5 Rabbit Antibody at 1:100 dilution.  
Perform heat mediated antigen retrieval with Tris-EDTA buffer pH 9.0