

Anti-NSE Rabbit pAb



WL02745

For Research Use Only. Not For Use In Diagnostic Procedures

Product Information

Product name	Anti-NSE Rabbit pAb	
Source	Rabbit	
Species reactivity	Human, Mouse, Rat	
Tested applications	WB	1:1000-1:2000
	IHC	1:100-1:300
	IF	1:100-1:200
Cellular localization	Cytoplasm. Cell membrane	
Pack size	50/100/200/500/1000μl	
Storage	Store at -20°C. Avoid freeze/thaw cycles.	
Storage buffer	Supplied in 20 mM phosphate (pH 7.5), 150 mM NaCl, 100 μg/ml	
	BSA, 50% glycerol and less than 0.02% sodium azide	

General Information

Background	Gamma-enolase, also known as enolase 2 (ENO2) or neuron specific enolase (NSE), is an enzyme that in humans is encoded by the ENO2 gene. Gamma-enolase is a phosphopyruvate hydratase. Mammalian enolase has three subunits: α, β, and γ. These isoforms exist as both homodimers and heterodimers, and they play a role in converting phosphoglyceric acid to phosphoenolpyruvic acid in the glycolytic pathway. Homodimers of γ enolase are neuronal-specific. Research studies have shown elevated levels of neuro-specific enolase-2 in neuroblastoma and small-cell lung cancer.
Immunogen	Polyclonal antibody is produced by immunizing animals with a synthetic peptide of NSE.
Purification	Polyclonal antibody was purified by Protein A affinity chromatography.

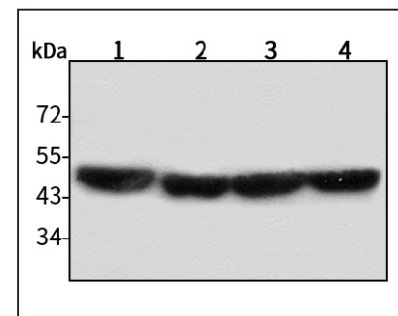
Anti-NSE Rabbit pAb



WL02745

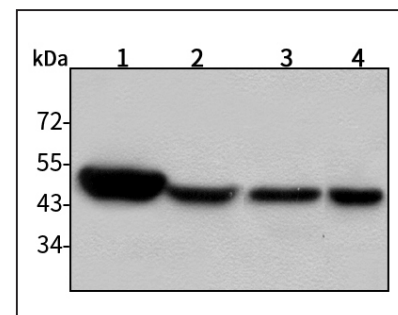
For Research Use Only. Not For Use In Diagnostic Procedures

Product Images



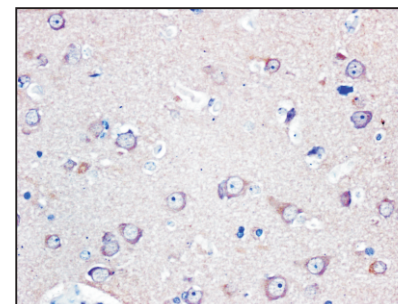
Western blot-Anti-NSE pAb

Lane 1: Human HepG2 cell lysate
 Lane 2: Human Hela cell lysate
 Lane 3: Human BGC-823 cell lysate
 Lane 4: Human MGC-803 cell lysate
 All lanes: Anti-NSE at 1:1000 dilution
 Lysates/proteins at 20-50 μg per lane.
 Predicted band size: 48 kDa
 Observed band size: 48 kDa



Western blot-Anti-NSE pAb

Lane 1: Mouse brain tissue lysate
 Lane 2: Mouse lung tissue lysate
 Lane 3: Rat colon tissue lysate
 Lane 4: Rat stomach tissue lysate
 All lanes: Anti-NSE at 1:1000 dilution
 Lysates/proteins at 20-50 μg per lane.
 Predicted band size: 48 kDa
 Observed band size: 48 kDa



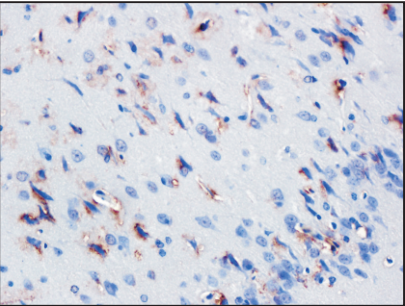
Immunohistochemistry-Anti-NSE pAb

Immunohistochemical analysis of paraffin-embedded human brain glioma using anti-NSE Rabbit Antibody at 1:200 dilution.
 Perform heat mediated antigen retrieval with Tris-EDTA buffer pH 9.0

Anti-NSE Rabbit pAb

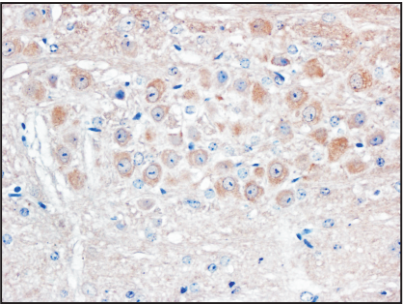
For Research Use Only. Not For Use In Diagnostic Procedures

Product Information



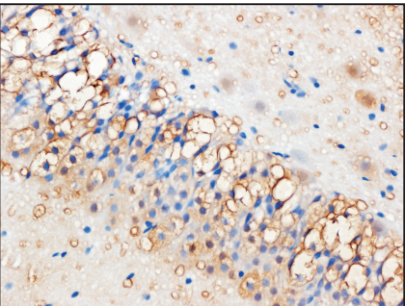
Immunohistochemistry-Anti-NSE pAb

Immunohistochemical analysis of paraffin-embedded mouse brain using anti-NSE Rabbit Antibody at 1:150 dilution.
Perform heat mediated antigen retrieval with Tris-EDTA buffer pH 9.0



Immunohistochemistry-Anti-NSE pAb

Immunohistochemical analysis of paraffin-embedded mouse cerebellum using anti-NSE Rabbit Antibody at 1:200 dilution.
Perform heat mediated antigen retrieval with Tris-EDTA buffer pH 9.0



Immunohistochemistry-Anti-NSE pAb

Immunohistochemical analysis of paraffin-embedded rat brain using anti-NSE Rabbit Antibody at 1:200 dilution.
Perform heat mediated antigen retrieval with Tris-EDTA buffer pH 9.0

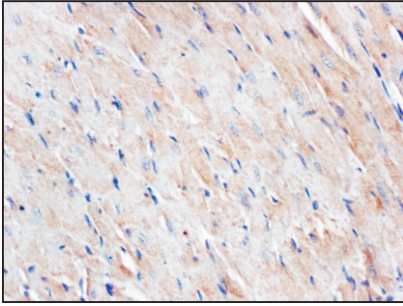


WL02745

Anti-NSE Rabbit pAb

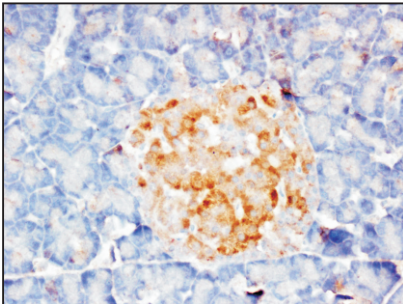
For Research Use Only. Not For Use In Diagnostic Procedures

Product Images



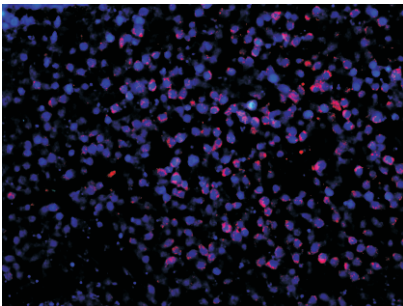
Immunohistochemistry-Anti-NSE pAb

Immunohistochemical analysis of paraffin-embedded rat heart using anti-NSE Rabbit Antibody at 1:200 dilution.
Perform heat mediated antigen retrieval with Tris-EDTA buffer pH 9.0



Immunohistochemistry-Anti-NSE pAb

Immunohistochemical analysis of paraffin-embedded rat pancreas using anti-NSE Rabbit Antibody at 1:200 dilution.
Perform heat mediated antigen retrieval with Tris-EDTA buffer pH 9.0



Immunofluorescence-Anti-NSE pAb

Immunofluorescence analysis of paraffin-embedded human BGC-823 cell tumorigenic tissue using anti-NSE Rabbit Antibody at 1:200 dilution.
Perform heat mediated antigen retrieval with Tris-EDTA buffer pH 9.0



WL02745

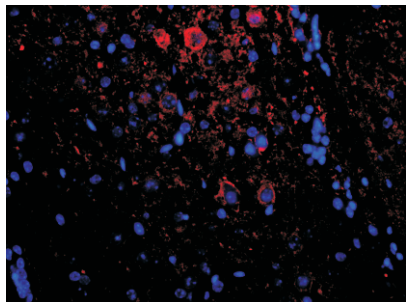
Anti-NSE Rabbit pAb



WL02745

For Research Use Only. Not For Use In Diagnostic Procedures

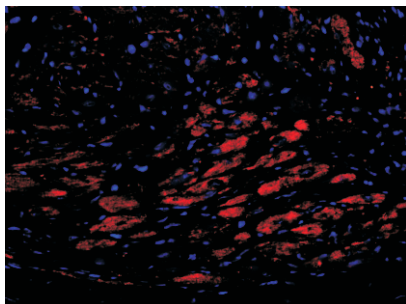
Product Information



Immunofluorescence-Anti-NSE pAb

Immunofluorescence analysis of paraffin-embedded mouse cerebellum using anti-NSE Rabbit Antibody at 1:200 dilution.

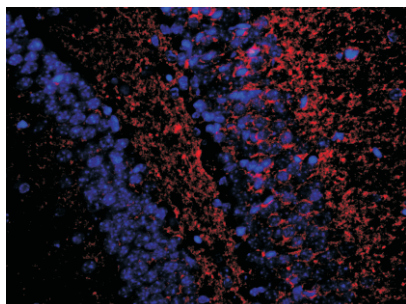
Perform heat mediated antigen retrieval with Tris-EDTA buffer pH 9.0



Immunofluorescence-Anti-NSE pAb

Immunofluorescence analysis of paraffin-embedded mouse spinal cord using anti-NSE Rabbit Antibody at 1:200 dilution.

Perform heat mediated antigen retrieval with Tris-EDTA buffer pH 9.0



Immunofluorescence-Anti-NSE pAb

Immunofluorescence analysis of paraffin-embedded rat brain using anti-NSE Rabbit Antibody at 1:200 dilution.

Perform heat mediated antigen retrieval with Tris-EDTA buffer pH 9.0