

## Anti-Occludin Rabbit pAb



WL01996

For Research Use Only. Not For Use In Diagnostic Procedures

## Product Information

<b>Product name</b>	Anti-Occludin Rabbit pAb	
<b>Source</b>	Rabbit	
<b>Species reactivity</b>	Human, Mouse, Rat	
<b>Tested applications</b>	WB	1:1000-1:2000
	IHC	1:100-1:300
	IF	1:100-1:200
<b>Cellular localization</b>	Membrane. Cell junction	
<b>Pack size</b>	50/100/200/500/1000µl	
<b>Storage</b>	Store at -20°C. <b>Avoid freeze/thaw cycles.</b>	
<b>Storage buffer</b>	Supplied in 20 mM phosphate (pH 7.5), 150 mM NaCl, 100 µg/ml	
	BSA, 50% glycerol and less than 0.02% sodium azide	

## General Information

<b>Background</b>	<p>Occludin is an integral membrane protein closely associated with the tight junctions of epithelial and endothelial cells. Occludin is a tetraspan integral membrane protein in epithelial and endothelial tight junction (TJ) structures that can contain two extracellular loops. The protein exists in a variety of phosphorylated forms. Phosphorylation is involved in regulating both the localization and the function of occludin. Expression of occludin is up-regulated by polyunsaturated fatty acids, increasing transendothelial cell resistance and reducing cellular permeability to large molecules. The level of occludin varies greatly depending on tissue; in brain tissue, occludin is highly expressed at cell-cell contact sites. Non-neural tissues show lower expression and discontinuous distribution. Up-regulation of epithelial occludin may play a role in enhancing paracellular permeability and be related to the damage to the tight junction.</p>
<b>Immunogen</b>	<p>Polyclonal antibody is produced by immunizing animals with recombinant protein of Occludin.</p>
<b>Purification</b>	<p>Polyclonal antibody was purified by Protein A affinity chromatography.</p>

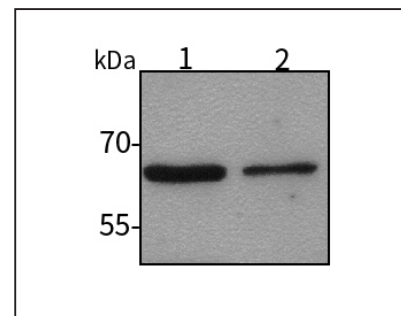
## Anti-Occludin Rabbit pAb



WL01996

For Research Use Only. Not For Use In Diagnostic Procedures

## Product Images



## Western blot-Anti-Occludin pAb

Lane 1: Human HepG2 cell lysate

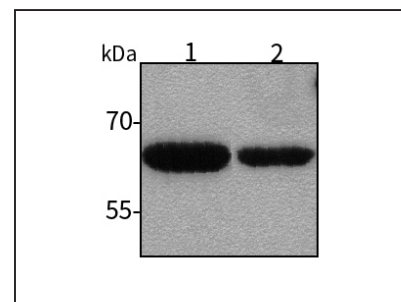
Lane 2: Human Hela cell lysate

All lanes: Anti-Occludin at 1:1000 dilution

Lysates/proteins at 20-50 µg per lane.

Predicted band size: 59 kDa

Observed band size: 65 kDa



## Western blot-Anti-Occludin pAb

Lane 1: Mouse heart tissue lysate

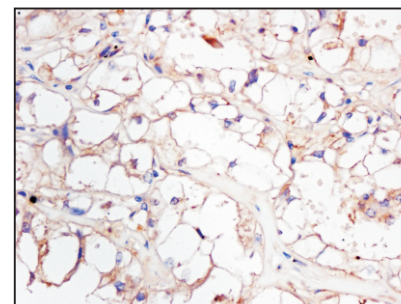
Lane 2: Rat colon tissue lysate

All lanes: Anti-Occludin at 1:1000 dilution

Lysates/proteins at 20-50 µg per lane.

Predicted band size: 59 kDa

Observed band size: 65 kDa



## Immunohistochemistry-Anti-Occludin pAb

Immunohistochemical analysis of paraffin-embedded human kidney cancer using anti-Occludin Rabbit Antibody at 1:200 dilution.

Perform heat mediated antigen retrieval with Tris-EDTA buffer pH 9.0

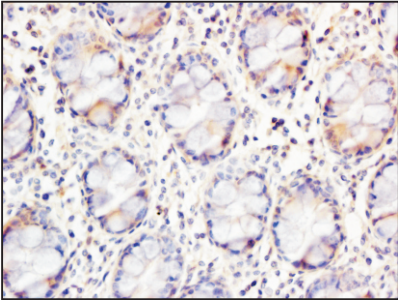
Anti-Occludin Rabbit pAb



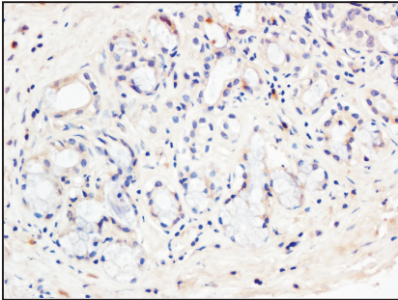
WL01996

For Research Use Only. Not For Use In Diagnostic Procedures

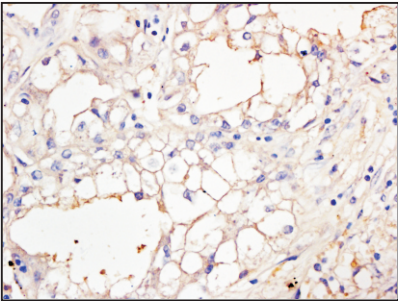
Product Information



**Immunohistochemistry-Anti-Occludin pAb**  
Immunohistochemical analysis of paraffin-embedded human colon cancer using anti-Occludin Rabbit Antibody at 1:200 dilution.  
Perform heat mediated antigen retrieval with Tris-EDTA buffer pH 9.0



**Immunohistochemistry-Anti-Occludin pAb**  
Immunohistochemical analysis of paraffin-embedded human bile duct cancer using anti-Occludin Rabbit Antibody at 1:200 dilution.  
Perform heat mediated antigen retrieval with Tris-EDTA buffer pH 9.0



**Immunohistochemistry-Anti-Occludin pAb**  
Immunohistochemical analysis of paraffin-embedded human kidney cancer using anti-Occludin Rabbit Antibody at 1:200 dilution.  
Perform heat mediated antigen retrieval with Tris-EDTA buffer pH 9.0

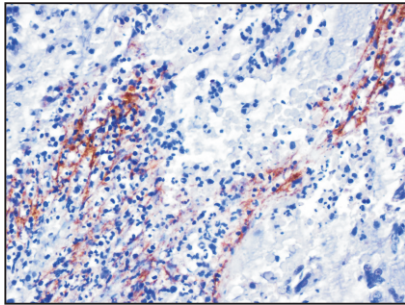
Anti-Occludin Rabbit pAb



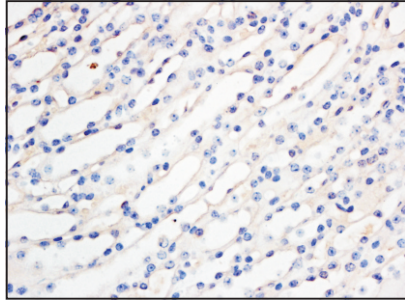
WL01996

For Research Use Only. Not For Use In Diagnostic Procedures

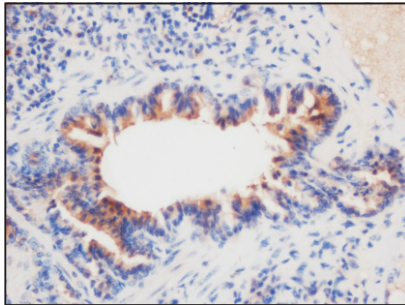
Product Information



**Immunohistochemistry-Anti-Occludin pAb**  
Immunohistochemical analysis of paraffin-embedded human stomach cancer using anti-Occludin Rabbit Antibody at 1:200 dilution.  
Perform heat mediated antigen retrieval with Tris-EDTA buffer pH 9.0



**Immunohistochemistry-Anti-Occludin pAb**  
Immunohistochemical analysis of paraffin-embedded mouse kidney using anti-Occludin Rabbit Antibody at 1:200 dilution.  
Perform heat mediated antigen retrieval with Tris-EDTA buffer pH 9.0



**Immunohistochemistry-Anti-Occludin pAb**  
Immunohistochemical analysis of paraffin-embedded mouse lung using anti-Occludin Rabbit Antibody at 1:200 dilution.  
Perform heat mediated antigen retrieval with Tris-EDTA buffer pH 9.0

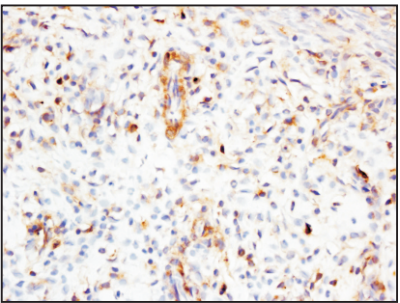
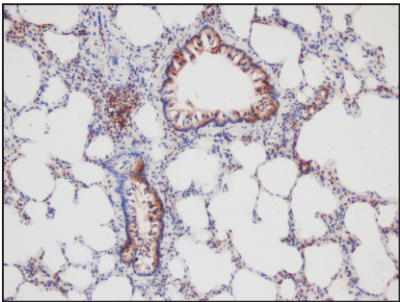
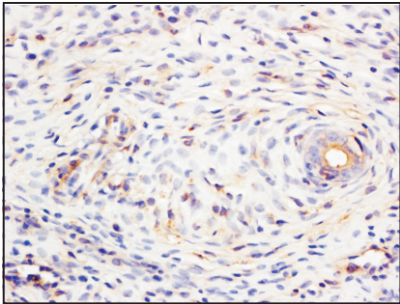
Anti-Occludin Rabbit pAb



WL01996

For Research Use Only. Not For Use In Diagnostic Procedures

Product Information



Immunohistochemistry-Anti-Occludin pAb

Immunohistochemical analysis of paraffin-embedded rat uterus using anti-Occludin Rabbit Antibody at 1:200 dilution.  
Perform heat mediated antigen retrieval with Tris-EDTA buffer pH 9.0

Immunohistochemistry-Anti-Occludin pAb

Immunohistochemical analysis of paraffin-embedded rat lung using anti-Occludin Rabbit Antibody at 1:200 dilution.  
Perform heat mediated antigen retrieval with Tris-EDTA buffer pH 9.0

Immunohistochemistry-Anti-Occludin pAb

Immunohistochemical analysis of paraffin-embedded rat uterus using anti-Occludin Rabbit Antibody at 1:200 dilution.  
Perform heat mediated antigen retrieval with Tris-EDTA buffer pH 9.0

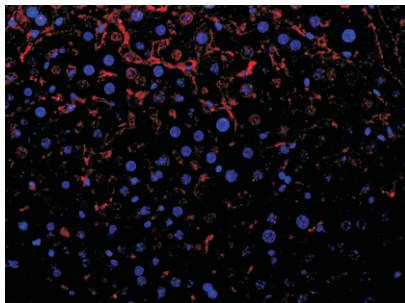
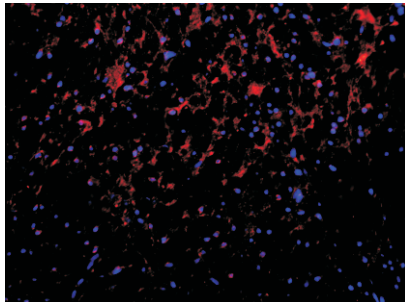
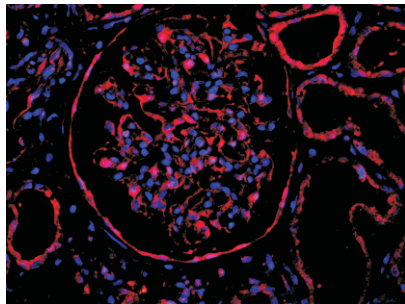
Anti-Occludin Rabbit pAb



WL01996

For Research Use Only. Not For Use In Diagnostic Procedures

Product Information



Immunofluorescence-Anti-Occludin pAb

Immunofluorescence analysis of paraffin-embedded human kidney using anti-Occludin Rabbit Antibody at 1:200 dilution.  
Perform heat mediated antigen retrieval with Tris-EDTA buffer pH 9.0

Immunofluorescence-Anti-Occludin pAb

Immunofluorescence analysis of paraffin-embedded human colon cancer using anti-Occludin Rabbit Antibody at 1:200 dilution.  
Perform heat mediated antigen retrieval with Tris-EDTA buffer pH 9.0

Immunofluorescence-Anti-Occludin pAb

Immunofluorescence analysis of paraffin-embedded mouse liver using anti-Occludin Rabbit Antibody at 1:200 dilution.  
Perform heat mediated antigen retrieval with Tris-EDTA buffer pH 9.0



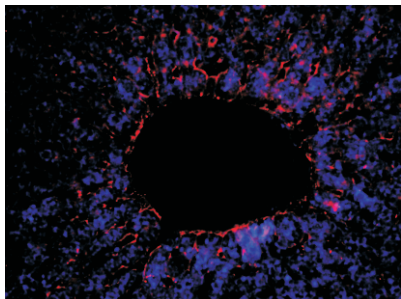
## Anti-Occludin Rabbit pAb



WL01996

For Research Use Only. Not For Use In Diagnostic Procedures

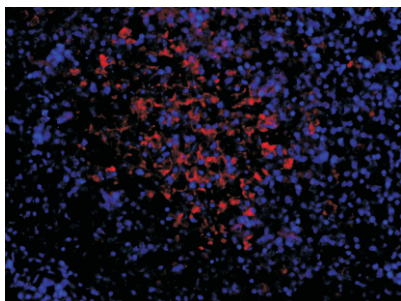
### Product Information



#### Immunofluorescence-Anti-Occludin pAb

Immunofluorescence analysis of paraffin-embedded rat liver using anti-Occludin Rabbit Antibody at 1:200 dilution.

Perform heat mediated antigen retrieval with Tris-EDTA buffer pH 9.0



#### Immunofluorescence-Anti-Occludin pAb

Immunofluorescence analysis of paraffin-embedded rat spleen cancer anti-Occludin Rabbit Antibody at 1:200 dilution.

Perform heat mediated antigen retrieval with Tris-EDTA buffer pH 9.0