

Anti-M6PR Rabbit pAb



WL02758

For Research Use Only. Not For Use In Diagnostic Procedures

Product Information

Product name	Anti-M6PR Rabbit pAb		
Source	Rabbit		
Species reactivity	Human, Mouse, Rat		
Tested applications	WB	1:1000-1:2000	
	IHC	1:100-1:400	
	IF	1:500	
Cellular localization	Endosome, Golgi apparatus, Membrane		
Pack size	50/100/200/500/1000μl		
Storage	Store at -20°C. Avoid freeze/thaw cycles.		
Storage buffer	Supplied in 20 mM phosphate (pH 7.5), 150 mM NaCl, 100 μg/ml		
	BSA, 50% glycerol and less than 0.02% sodium azide		

General Information

Background	Insulin-like growth factor 2 (IGF-2) receptor, also widely known as M6PR, is a multifunctional type I transmembrane glycoprotein that participates in the internalization of mannose-6-phosphate modified hydrolases and IGF-2 from the plasma membrane. M6PR functions to clear IGF2 from the cell surface to attenuate signalling, and to transport lysosomal acid hydrolase precursors from the Golgi apparatus to the lysosome. After binding IGF2 at the cell surface, M6PRs accumulate in forming clathrin-coated vesicles and are internalized. In the lumen of the trans-Golgi network, the M6PR binds M6P-tagged cargo. In several research studies, M6PR has been recognized as a tumor suppressor in a number of cancers.
Immunogen	Polyclonal antibody is produced by immunizing animals with a synthetic peptide of M6PR.
Purification	Polyclonal antibody was purified by Protein A affinity chromatography.

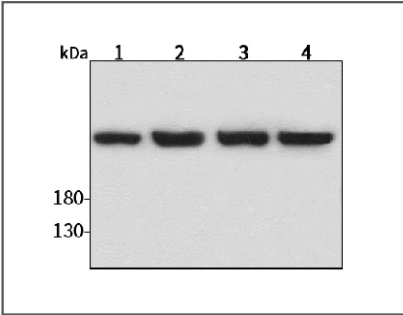
Anti-M6PR Rabbit pAb



WL02758

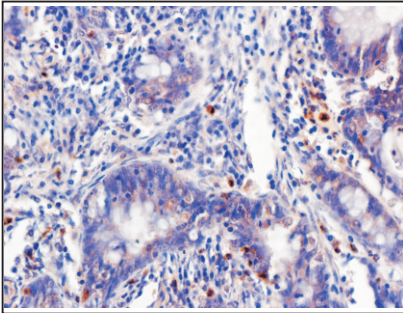
For Research Use Only. Not For Use In Diagnostic Procedures

Product Images



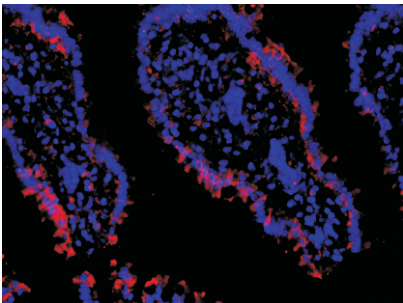
Western blot-Anti-M6PR pAb

Lane 1: Human HepG2 cell lysate  
Lane 2: Human Hela cell lysate  
Lane 3: Human BGC-823 cell lysate  
Lane 4: Human MGC-803 cell lysate  
All lanes: Anti-M6PR at 1:1000 dilution  
Lysates/proteins at 20-50 μg per lane.  
Predicted band size: 274 kDa  
Observed band size: 274 kDa



Immunohistochemistry-Anti-M6PR pAb

Immunohistochemical analysis of paraffin-embedded human colon cancer using anti-M6PR Rabbit Antibody at 1:200 dilution.  
Perform heat mediated antigen retrieval with Tris-EDTA buffer pH 9.0



Immunofluorescence-Anti-M6PR pAb

Immunofluorescence analysis of paraffin-embedded rat intestine using anti-M6PR Rabbit Antibody at 1:200 dilution.  
Perform heat mediated antigen retrieval with Tris-EDTA buffer pH 9.0