

Anti-KIF3A Rabbit pAb



WL05158

For Research Use Only. Not For Use In Diagnostic Procedures

Product Information

Product name	Anti-KIF3A Rabbit pAb		
Source	Rabbit		
Species reactivity	Human, Mouse, Rat		
Tested applications	WB	1:500-1:1000	
	IHC	1:50-1:200	
Cellular localization	Cell projection, Cilium, Cytoplasm, Cytoskeleton, Microtubule		
Pack size	50/100/200/500/1000μl		
Storage	Store at -20°C. Avoid freeze/thaw cycles.		
Storage buffer	Supplied in 20 mM phosphate (pH 7.5), 150 mM NaCl, 100 μg/ml		
	BSA, 50% glycerol and less than 0.02% sodium azide		

General Information

Background	KIF3A is a subunit of Kinesin II that is essential for intraflagellar transport (IFT). It functions as the anterograde motor to deliver ciliary components to the tip where the axoneme is assembled. Disruption of KIF3A has been reported to block mammalian ciliogenesis. Recently KIF3A has been found to localize to the mother centriole and is required for centrioles organization.
Immunogen	Polyclonal antibody is produced by immunizing animals with a synthetic peptide of KIF3A.
Purification	Polyclonal antibody was purified by immunogen affinity chromatography.

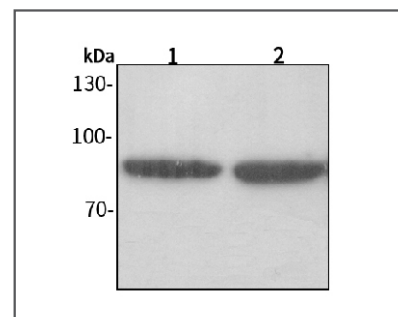
Anti-KIF3A Rabbit pAb



WL05158

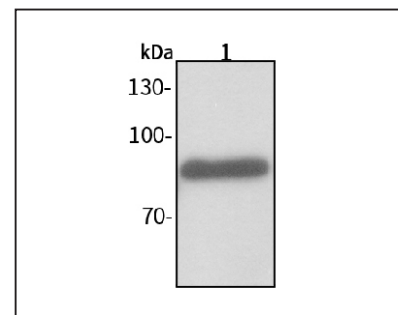
For Research Use Only. Not For Use In Diagnostic Procedures

Product Images



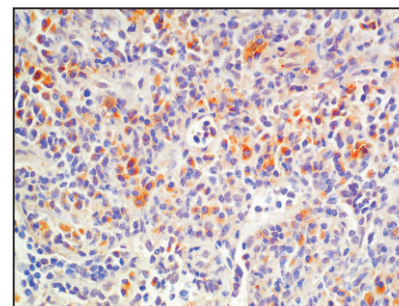
Western blot-Anti-KIF3A pAb

Lane 1: Human Hela cell lysate
 Lane 2: Human MCF-7 cell lysate
 All lanes: Anti-KIF3A at 1:1000 dilution
 Lysates/proteins at 20-50 μg per lane.
 Predicted band size: 80 kDa
 Observed band size: 80 kDa



Western blot-Anti-KIF3A pAb

Lane 1: Rat lung tissue lysate
 All lanes: Anti-KIF3A at 1:1000 dilution
 Lysates/proteins at 20-50 μg per lane.
 Predicted band size: 80 kDa
 Observed band size: 80 kDa



Immunohistochemistry-Anti-KIF3A pAb

Immunohistochemical analysis of paraffin-embedded human nasal mucosa using anti-KIF3A Rabbit Antibody at 1:100 dilution.
 Perform heat mediated antigen retrieval with Tris-EDTA buffer pH 9.0

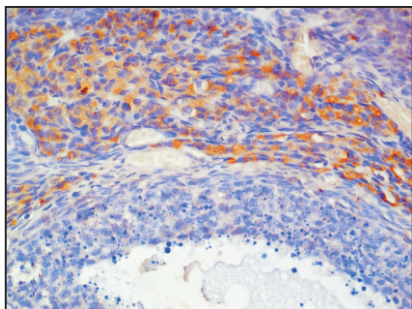
Anti-KIF3A Rabbit pAb



WL05158

For Research Use Only. Not For Use In Diagnostic Procedures

Product Information



Immunohistochemistry-Anti-KIF3A pAb

Immunohistochemical analysis of paraffin-embedded rat ovary using anti-KIF3A Rabbit Antibody at 1:100 dilution.

Perform heat mediated antigen retrieval with Tris-EDTA buffer pH 9.0