

Anti-keap1 Rabbit pAb



WL03285

For Research Use Only. Not For Use In Diagnostic Procedures

Product Information

Product name	Anti-keap1 Rabbit pAb	
Source	Rabbit	
Species reactivity	Human, Mouse, Rat	
Tested applications	WB	1:1000-1:2000
	IHC	1:100-1:400
Cellular localization	Cytoplasm. Nucleus	
Pack size	50/100/200/500/1000µl	
Storage	Store at -20°C. Avoid freeze/thaw cycles.	
Storage buffer	Supplied in 20 mM phosphate (pH 7.5), 150 mM NaCl, 100 µg/ml	
	BSA, 50% glycerol and less than 0.02% sodium azide	

General Information

Background	Keap1 has four discrete protein domains. The intervening region (IVR) domain contains two critical cysteine residues, Cys273 and Cys288, which are a second group of cysteines important for stress sensing. Keap1 has been shown to interact with Nrf2, a master regulator of the antioxidant response, which is important for the amelioration of oxidative stress. Because Nrf2 activation leads to a coordinated antioxidant and anti-inflammatory response, and Keap1 represses Nrf2 activation, Keap1 has become a very attractive drug target.
Immunogen	Polyclonal antibody is produced by immunizing animals with a synthetic peptide of keap1.
Purification	Polyclonal antibody was purified by Protein A affinity chromatography.

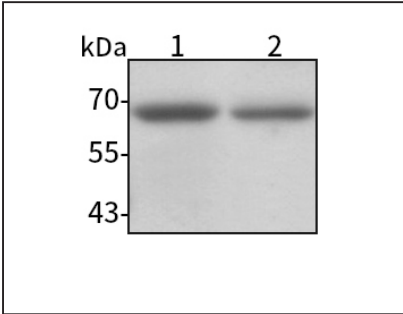
Anti-keap1 Rabbit pAb



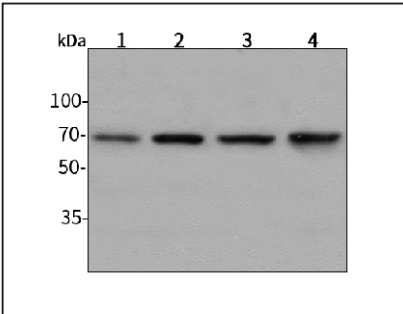
WL03285

For Research Use Only. Not For Use In Diagnostic Procedures

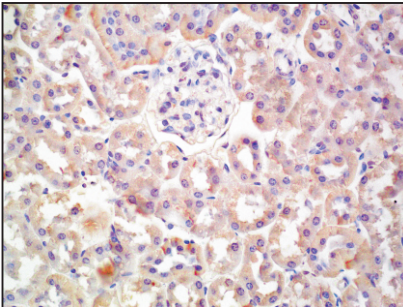
Product Images



Western blot-Anti-keap1 pAb
Lane 1: Human THP-1 cell lysate
Lane 2: Human Raji cell lysate
All lanes: Anti-keap1 at 1:1000 dilution
Lysates/proteins at 20-50 µg per lane.
Predicted band size: 69 kDa
Observed band size: 69 kDa



Western blot-Anti-keap1 pAb
Lane 1: Mouse heart tissue lysate
Lane 2: Mouse brain tissue lysate
Lane 3: Rat liver tissue lysate
Lane 4: Rat lung tissue lysate
All lanes: Anti-keap1 at 1:1000 dilution
Lysates/proteins at 20-50 µg per lane.
Predicted band size: 69 kDa
Observed band size: 69 kDa



Immunohistochemistry-Anti-keap1 pAb
Immunohistochemical analysis of paraffin-embedded mouse kidney using anti-keap1 Rabbit Antibody at 1:200 dilution.
Perform heat mediated antigen retrieval with Tris-EDTA buffer pH 9.0

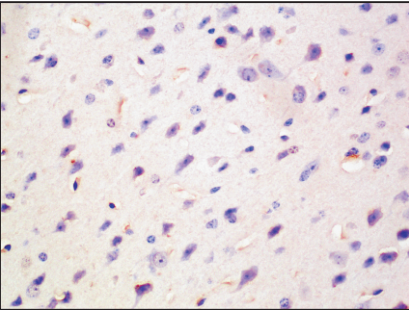
Anti-keap1 Rabbit pAb



WL03285

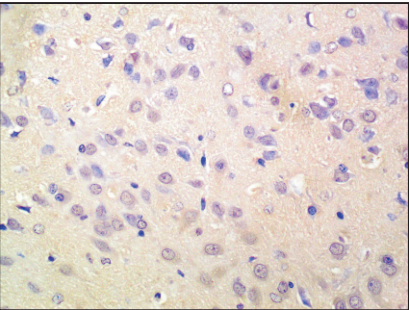
For Research Use Only. Not For Use In Diagnostic Procedures

Product Information



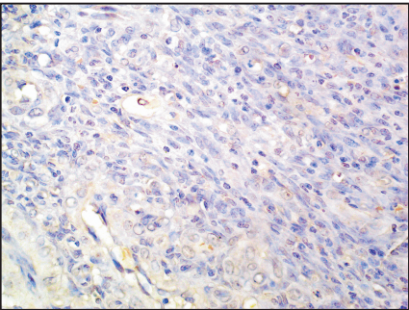
Immunohistochemistry-Anti-keap1 pAb

Immunohistochemical analysis of paraffin-embedded mouse cerebral cortex using anti-keap1 Rabbit Antibody at 1:200 dilution.
Perform heat mediated antigen retrieval with Tris-EDTA buffer pH 9.0



Immunohistochemistry-Anti-keap1 pAb

Immunohistochemical analysis of paraffin-embedded rat cerebral cortex using anti-keap1 Rabbit Antibody at 1:150 dilution.
Perform heat mediated antigen retrieval with Tris-EDTA buffer pH 9.0



Immunohistochemistry-Anti-keap1 pAb

Immunohistochemical analysis of paraffin-embedded rat bladder using anti-keap1 Rabbit Antibody at 1:200 dilution.
Perform heat mediated antigen retrieval with Tris-EDTA buffer pH 9.0

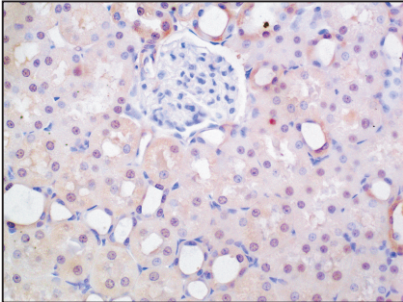
Anti-keap1 Rabbit pAb



WL03285

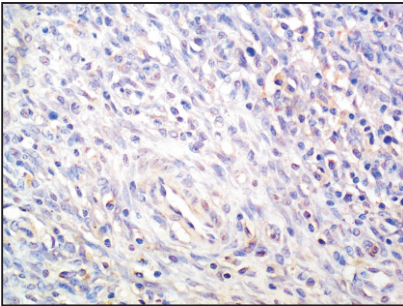
For Research Use Only. Not For Use In Diagnostic Procedures

Product Images



Immunohistochemistry-Anti-keap1 pAb

Immunohistochemical analysis of paraffin-embedded rat kidney using anti-keap1 Rabbit Antibody at 1:200 dilution.
Perform heat mediated antigen retrieval with Tris-EDTA buffer pH 9.0



Immunohistochemistry-Anti-keap1 pAb

Immunohistochemical analysis of paraffin-embedded rat uterus using anti-keap1 Rabbit Antibody at 1:200 dilution.
Perform heat mediated antigen retrieval with Tris-EDTA buffer pH 9.0