

Anti-CDK2 Rabbit pAb



WL01543

For Research Use Only. Not For Use In Diagnostic Procedures

Product Information

Product name	Anti-CDK2 Rabbit pAb	
Source	Rabbit	
Species reactivity	Human, Mouse, Rat	
Tested applications	WB	1:1000-1:2000
Pack size	50/100/200/500/1000μl	
Storage	Store at -20°C. Avoid freeze/thaw cycles.	
Storage buffer	Supplied in 20 mM phosphate (pH 7.5), 150 mM NaCl, 100 μg/ml BSA, 50% glycerol and less than 0.02% sodium azide	

General Information

Background	This gene encodes a member of a family of serine/threonine protein kinases that participate in cell cycle regulation. The encoded protein is the catalytic subunit of the cyclin-dependent protein kinase complex, which regulates progression through the cell cycle. Like p34cdc2, kinase activity is regulated by phosphorylation state as well as association with a cyclin subunit and a CDK inhibitor. Inhibition of CDK2-cyclin complexes can also be attributed to association with p27 Kip1 and p21 Waf1/Cip1. Activation of CDK2 complexes requires dephosphorylation of Thr14 and Tyr15 by cdc25 phosphatase and phosphorylation of Thr160, which is mediated by CAK, a complex of CDK7 and cyclin H.
Immunogen	Polyclonal antibody is produced by immunizing animals with a synthetic peptide of CDK2.
Purification	Polyclonal antibody was purified by protein A affinity chromatography.

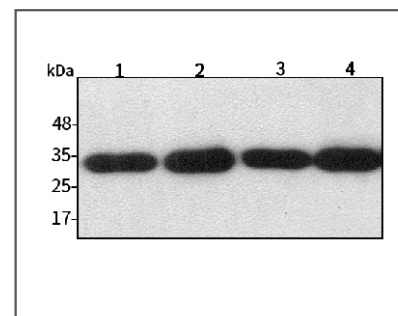
Anti-CDK2 Rabbit pAb



WL01543

For Research Use Only. Not For Use In Diagnostic Procedures

Product Images



Western blot-Anti-CDK2 pAb

Lane 1: Human HepG2 cell lysate
 Lane 2: Human Hela cell lysate
 Lane 3: Human BGC-823 cell lysate
 Lane 4: Human MCF-7 cell lysate
 All lanes: Anti-CDK2 at 1:1000 dilution
 Lysates/proteins at 20-50 μg per lane.
 Predicted band size: 34 kDa
 Observed band size: 34 kDa