

Anti-PD-L1 Rabbit pAb



WLH2821

For Research Use Only. Not For Use In Diagnostic Procedures

Product Information

Product name	Anti-PD-L1 Rabbit pAb	
Source	Rabbit	
Species reactivity	Human, Mouse, Rat	
Tested applications	IHC	1:100-1:400
	IF	1:100-1:400
Cellular localization	Cell membrane, Endosome, Membrane, Nucleus, Secreted.	
Pack size	50/100/200/500/1000μl	
Storage	Store at -20°C. Avoid freeze/thaw cycles.	
Storage buffer	Supplied in 20 mM phosphate (pH 7.5), 150 mM NaCl, 100 μg/ml	
	BSA, 50% glycerol and less than 0.02% sodium azide	

General Information

Background	Programmed death-ligand 1 (PD-L1) also known as cluster of differentiation 274 (CD274) or B7 homolog 1 (B7-H1) is a protein that in humans is encoded by the CD274 gene. The binding of PD-L1 to PD-1 or B7.1 transmits an inhibitory signal which reduces the proliferation of these CD8 ⁺ T cells at the lymph nodes and supplementary to that PD-1 is also able to control the accumulation of foreign antigen specific T cells in the lymph nodes through apoptosis which is further mediated by a lower regulation of the gene Bcl-2. It appears that upregulation of PD-L1 may allow cancers to evade the host immune system.
Immunogen	Polyclonal antibody is produced by immunizing animals with a synthetic peptide of PD-L1.
Purification	Polyclonal antibody was purified by immunogen affinity chromatography.

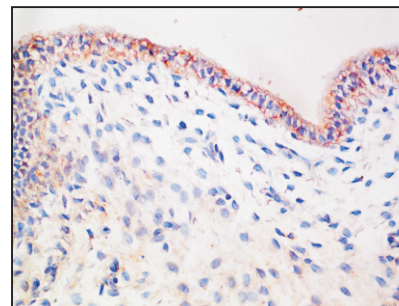
Anti-PD-L1 Rabbit pAb



WLH2821

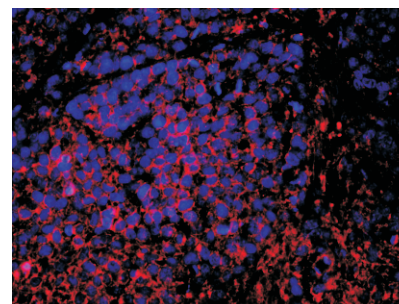
For Research Use Only. Not For Use In Diagnostic Procedures

Product Images



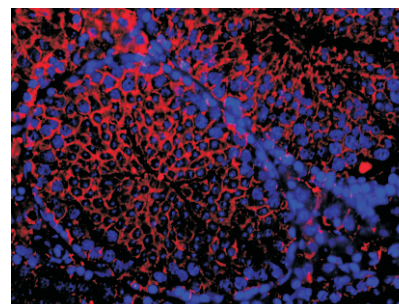
Immunohistochemistry-Anti-PD-L1 pAb

Immunohistochemical analysis of paraffin-embedded rat uterus using anti-PD-L1 Rabbit Antibody at 1:200 dilution.
Perform heat mediated antigen retrieval with Tris-EDTA buffer pH 9.0



Immunofluorescence-Anti-PD-L1 pAb

Immunofluorescence analysis of paraffin-embedded human BGC-823 cell tumorigenic tissue using anti-PD-L1 Rabbit Antibody at 1:200 dilution.
Perform heat mediated antigen retrieval with Tris-EDTA buffer pH 9.0



Immunofluorescence-Anti-PD-L1 pAb

Immunofluorescence analysis of paraffin-embedded mouse testicle using anti-PD-L1 Rabbit Antibody at 1:200 dilution.
Perform heat mediated antigen retrieval with Tris-EDTA buffer pH 9.0

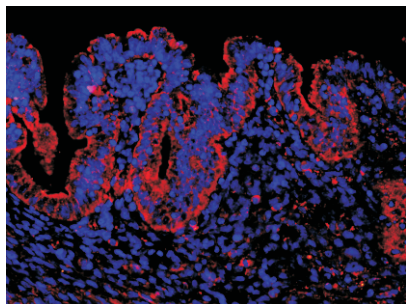
Anti-PD-L1 Rabbit pAb



WLH2821

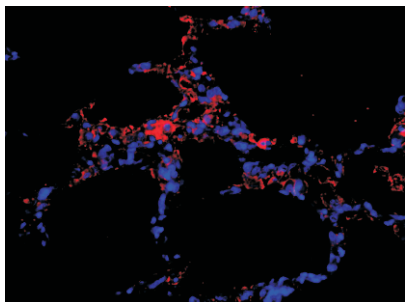
For Research Use Only. Not For Use In Diagnostic Procedures

Product Information



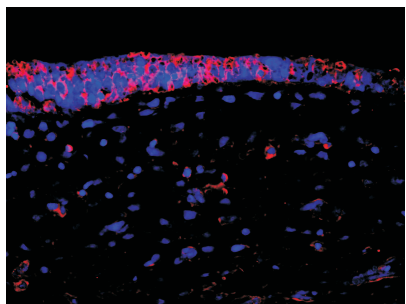
Immunofluorescence-Anti-PD-L1 pAb

Immunofluorescence analysis of paraffin-embedded mouse uterus using anti-PD-L1 Rabbit Antibody at 1:200 dilution.
Perform heat mediated antigen retrieval with Tris-EDTA buffer pH 9.0



Immunofluorescence-Anti-PD-L1 pAb

Immunofluorescence analysis of paraffin-embedded rat lung using anti-PD-L1 Rabbit Antibody at 1:200 dilution.
Perform heat mediated antigen retrieval with Tris-EDTA buffer pH 9.0



Immunofluorescence-Anti-PD-L1 pAb

Immunofluorescence analysis of paraffin-embedded rat uterus using anti-PD-L1 Rabbit Antibody at 1:200 dilution.
Perform heat mediated antigen retrieval with Tris-EDTA buffer pH 9.0