

## Anti-MTA2 Rabbit pAb



WL03836

For Research Use Only. Not For Use In Diagnostic Procedures

## Product Information

<b>Product name</b>	Anti-MTA2 Rabbit pAb
<b>Source</b>	Rabbit
<b>Species reactivity</b>	Human, Mouse, Rat
<b>Tested applications</b>	WB 1:1000-1:2000
<b>Pack size</b>	50/100/200/500/1000µl
<b>Storage</b>	Store at -20°C. <b>Avoid freeze/thaw cycles.</b>
<b>Storage buffer</b>	Supplied in 20 mM phosphate (pH 7.5), 150 mM NaCl, 100 µg/ml BSA, 50% glycerol and less than 0.02% sodium azide

## General Information

<b>Background</b>	MTA1 (metastasis-associated protein 1) is a component of the NURD (nucleosome remodeling and histone deacetylation) complex, which is associated with ATP-dependent chromatin-remodeling and histone deacetylase activity. Structurally, MTA1 contains a single SH3-binding motif and a zinc finger domain, along with a region similar to the co-repressor protein N-CoR. Overexpression of MTA1 correlates with tumor invasion and metastasis in various carcinomas including colorectal, gastrointestinal and breast carcinomas. Elevation of MTA1 levels in these tumors appears to enhance the metastases to lymph nodes, increase mammary cell motility and potentiate growth, and therefore may be an indicator for assessing the potential malignancies of various tumors.
<b>Immunogen</b>	Polyclonal antibody is produced by immunizing animals with a synthetic peptide of MTA2.

<b>Purification</b>	Polyclonal antibody was purified by ProteinA affinity chromatography.
---------------------	---

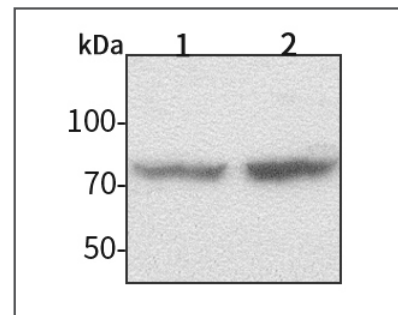
## Anti-MTA2 Rabbit pAb



WL03836

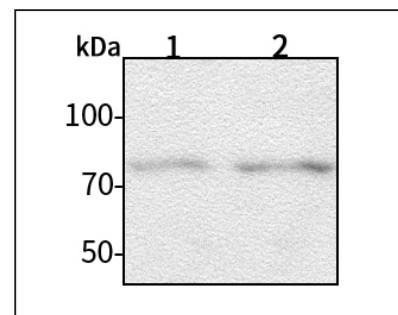
For Research Use Only. Not For Use In Diagnostic Procedures

## Product Images



Western blot-Anti-MTA2 pAb

**Lane 1:** Human HEK-293 cell lysate  
**Lane 2:** Human A549 cell lysate  
**All lanes:** Anti-MTA2 at 1:1000 dilution  
 Lysates/proteins at 20-50 µg per lane.  
 Predicted band size: 75 kDa  
 Observed band size: 75 kDa



Western blot-Anti-MTA2 pAb

**Lane 1:** Mouse heart tissue lysate  
**Lane 2:** Rat liver tissue lysate  
**All lanes:** Anti-MTA2 at 1:1000 dilution  
 Lysates/proteins at 20-50 µg per lane.  
 Predicted band size: 75 kDa  
 Observed band size: 75 kDa