

Anti-MEK5 Rabbit pAb



WLH4404

For Research Use Only. Not For Use In Diagnostic Procedures

Product Information

Product name	Anti-MEK5 Rabbit pAb	
Source	Rabbit	
Species reactivity	Mouse, Rat	
Tested applications	IHC	1:100-1:400
	IF	1:200
Cellular localization	Cytosol, Nucleus, Spindle.	
Pack size	50/100/200/500/1000μl	
Storage	Store at -20°C. Avoid freeze/thaw cycles.	
Storage buffer	Supplied in 20 mM phosphate (pH 7.5), 150 mM NaCl, 100 μg/ml	
	BSA, 50% glycerol and less than 0.02% sodium azide	

General Information

Background	A family of protein kinases located upstream of the MAP kinases and responsible for their activation has been identified. This kinase specifically interacts with and activates MAPK7/ERK5. MEK-3 (or MKK-3) functions to activate p38 MAP kinase, and MEK-4 (also called SEK1 or MKK-4) activates both p38 and JNK MAP kinases.
Immunogen	Polyclonal antibody is produced by immunizing animals with a synthetic peptide of MEK5.
Purification	Polyclonal antibody was purified by immunoge affinity chromatography.

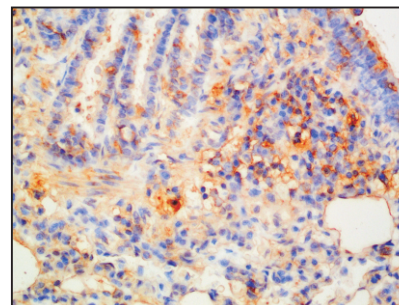
Anti-MEK5 Rabbit pAb



WLH4404

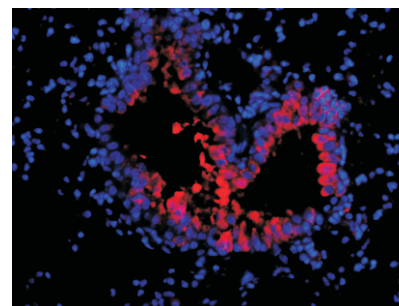
For Research Use Only. Not For Use In Diagnostic Procedures

Product Images



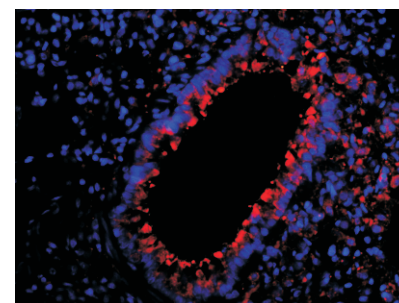
Immunohistochemistry-Anti-MEK5 pAb

Immunohistochemical analysis of paraffin-embedded mouse lung using anti-MEK5 Rabbit Antibody at 1:200 dilution.
Perform heat mediated antigen retrieval with Tris-EDTA buffer pH 9.0



Immunofluorescence-Anti-MEK5 pAb

Immunofluorescence analysis of paraffin-embedded mouse lung using anti-MEK5 Rabbit Antibody at 1:200 dilution.
Perform heat mediated antigen retrieval with Tris-EDTA buffer pH 9.0



Immunofluorescence-Anti-MEK5 pAb

Immunofluorescence analysis of paraffin-embedded rat lung using anti-MEK5 Rabbit Antibody at 1:200 dilution.
Perform heat mediated antigen retrieval with Tris-EDTA buffer pH 9.0