

Anti-Nephrin Rabbit pAb



WL02442

For Research Use Only. Not For Use In Diagnostic Procedures

Product Information

Product name	Anti-Nephrin Rabbit pAb	
Source	Rabbit	
Species reactivity	Human, Mouse, Rat	
Tested applications	WB	1:1000-1:2000
Pack size	50/100/200/500/1000µl	
Storage	Store at -20°C. Avoid freeze/thaw cycles.	
Storage buffer	Supplied in 20 mM phosphate (pH 7.5), 150 mM NaCl, 100 µg/ml BSA, 50% glycerol and less than 0.02% sodium azide	

General Information

Background

Nephrin is a member of the immunoglobulin family of cell adhesion molecules that localizes to opposing sites of the secondary foot processes formed by podocytes, a specialized epithelial cell that ensures size- and charge-selective ultrafiltration. The gene is primarily expressed in renal tissues, and the protein is a type-1 transmembrane protein found at the slit diaphragm of glomerular podocytes. Nephrin is expressed in embryonic and adult kidneys and localizes to glomerular podocytes and the glomerular slit diaphragm. Nephrin stimulates mitogen-activated protein kinases and is enhanced by podocin, which binds to the cytoplasmic tail of nephrin.

Immunogen

Polyclonal antibody is produced by immunizing animals with a synthetic peptide of Nephrin.

Purification

Polyclonal antibody was purified by Protein A affinity chromatography.

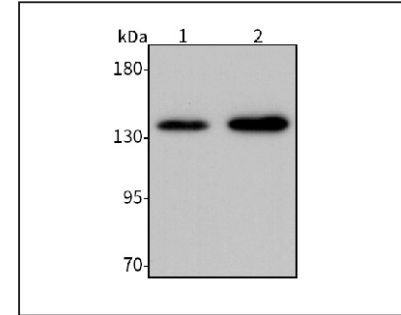
Anti-Nephrin Rabbit pAb



WL02442

For Research Use Only. Not For Use In Diagnostic Procedures

Product Images



Western blot-Anti-Nephrin pAb

Lane 1: Human Hela cell lysate

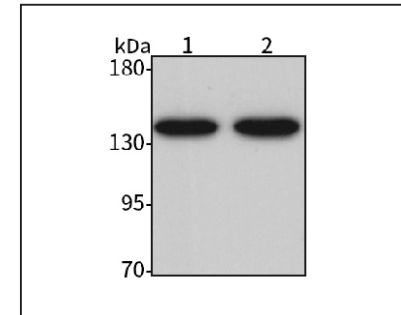
Lane 2: Human HEK-293 cell lysate

All lanes: Anti-Nephrin at 1:1000 dilution

Lysates/proteins at 20-50 µg per lane.

Predicted band size: 134 kDa

Observed band size: 134-200 kDa



Western blot-Anti-Nephrin pAb

Lane 1: Mouse kidney tissue lysate

Lane 2: Rat kidney tissue lysate

All lanes: Anti-Nephrin at 1:1000 dilution

Lysates/proteins at 20-50 µg per lane.

Predicted band size: 134 kDa

Observed band size: 134-200 kDa