

Anti-P70 S6 Kinase alpha Rabbit pAb



WL03839

For Research Use Only. Not For Use In Diagnostic Procedures

Product Information

Product name	Anti-P70 S6 Kinase alpha Rabbit pAb		
Source	Rabbit		
Species reactivity	Human, Mouse, Rat		
Tested applications	Western blot	1:1000-1:2000	
	Immunohistochemistry	1:100-1:400	
	Immunofluorescence	1:200-1:300	
Cellular localization	Cytoplasm; Nucleus.		
Pack size	50/100/200/500/1000µl		
Storage	Store at -20°C. Avoid freeze/thaw cycles.		
Storage buffer	Supplied in 20 mM phosphate (pH 7.5), 150 mM NaCl, 100 µg/ml BSA, 50% glycerol and less than 0.02% sodium azide		

General Information

Background	p70 S6 kinase is a mitogen activated Ser/Thr protein kinase that is required for cell growth and G1 cell cycle progression. p70 S6 kinase phosphorylates the S6 protein of the 40S ribosomal subunit and is involved in translational control of 5' oligopyrimidine tract mRNAs. A second isoform, p85 S6 kinase, is derived from the same gene and is identical to p70 S6 kinase except for 23 extra residues at the amino terminus, which encode a nuclear localizing signal. Both isoforms lie on a mitogen activated signaling pathway downstream of phosphoinositide-3 kinase (PI-3K) and the target of rapamycin, FRAP/mTOR, a pathway distinct from the Ras/MAP kinase cascade.
Immunogen	Polyclonal antibody is produced by immunizing animals with a synthetic peptide of P70 S6 Kinase alpha.
Purification	Polyclonal antibody was purified by Protein A affinity chromatography.

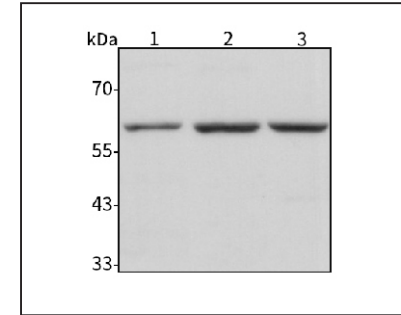
Anti-P70 S6 Kinase alpha Rabbit pAb



WL03839

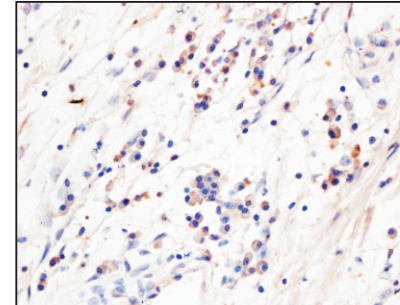
For Research Use Only. Not For Use In Diagnostic Procedures

Product Images



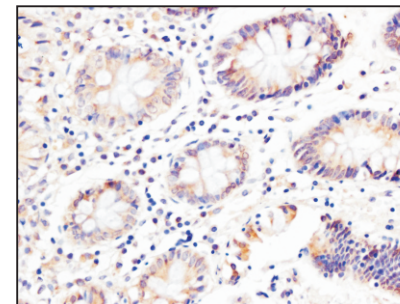
Western blot-Anti-P70 S6 Kinase alpha pAb

Lane 1: Human Hela cell lysate
 Lane 2: Human HEK293 cell lysate
 Lane 3: Human HCT116 cell lysate
 All lanes: Anti-P70 S6 Kinase alpha at 1:1000 dilution
 Lysates/proteins at 20-50 µg per lane
 Predicted band size: 59 kDa
 Observed band size: 59 kDa



Immunohistochemistry-Anti-P70 S6 Kinase alpha pAb

Sample: Human kidney cancer tissue
 Antigen retrieval: pH 9.0 Tris-EDTA buffer
 Primary antibody: 1:200, 4°C, overnight
 Secondary antibody-Biotin: 1:150, 37°C, 1h
 Streptavidin-HRP: 1:200, 37°C, 30min
 Color Developing: DAB



Immunohistochemistry-Anti-P70 S6 Kinase alpha pAb

Sample: Human colon cancer tissue
 Antigen retrieval: pH 9.0 Tris-EDTA buffer
 Primary antibody: 1:200, 4°C, overnight
 Secondary antibody-Biotin: 1:150, 37°C, 1h
 Streptavidin-HRP: 1:200, 37°C, 30min
 Color Developing: DAB

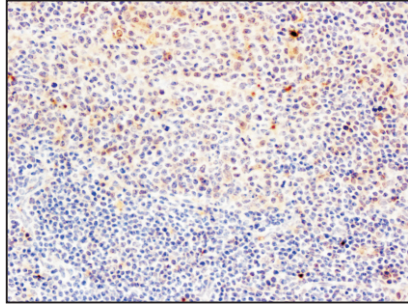
Anti-P70 S6 Kinase alpha Rabbit pAb



WL03839

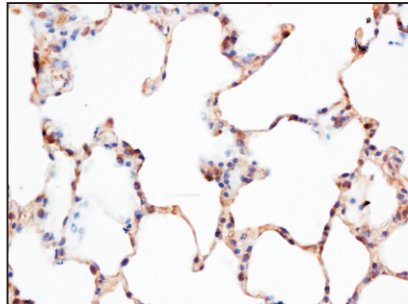
For Research Use Only. Not For Use In Diagnostic Procedures

Product Information



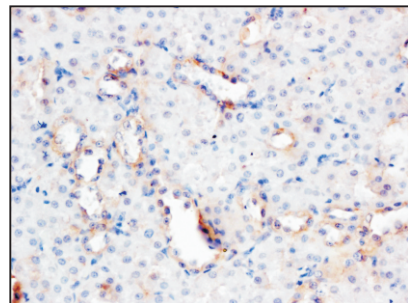
Immunohistochemistry-Anti-P70 S6 Kinase alpha pAb

Sample: Mouse spleen tissue
Antigen retrieval: pH 9.0 Tris-EDTA buffer
Primary antibody: 1:200, 4°C, overnight
Secondary antibody-Biotin: 1:150, 37°C, 1h
Streptavidin-HRP: 1:200, 37°C, 30min
Color Developing: DAB



Immunohistochemistry-Anti-P70 S6 Kinase alpha pAb

Sample: Rat lung tissue
Antigen retrieval: pH 9.0 Tris-EDTA buffer
Primary antibody: 1:200, 4°C, overnight
Secondary antibody-Biotin: 1:150, 37°C, 1h
Streptavidin-HRP: 1:200, 37°C, 30min
Color Developing: DAB



Immunohistochemistry-Anti-P70 S6 Kinase alpha pAb

Sample: Rat kidney tissue
Antigen retrieval: pH 9.0 Tris-EDTA buffer
Primary antibody: 1:200, 4°C, overnight
Secondary antibody-Biotin: 1:150, 37°C, 1h
Streptavidin-HRP: 1:200, 37°C, 30min
Color Developing: DAB

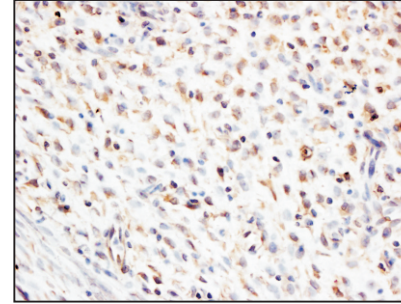
Anti-P70 S6 Kinase alpha Rabbit pAb



WL03839

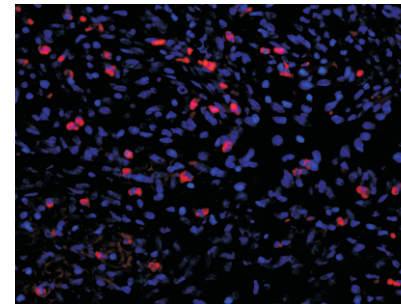
For Research Use Only. Not For Use In Diagnostic Procedures

Product Images



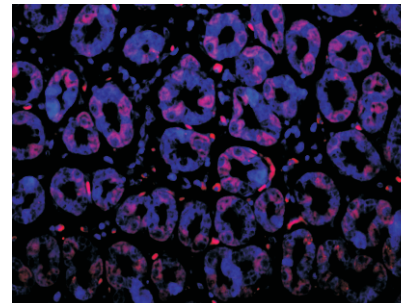
Immunohistochemistry-Anti-P70 S6 Kinase alpha pAb

Sample: Rat uterus tissue
Antigen retrieval: pH 9.0 Tris-EDTA buffer
Primary antibody: 1:200, 4°C, overnight
Secondary antibody-Biotin: 1:150, 37°C, 1h
Streptavidin-HRP: 1:200, 37°C, 30min
Color Developing: DAB



Immunofluorescence-Anti-P70 S6 Kinase alpha pAb

Sample: Human brain glioma tissue
Primary antibody: 1:200, 4°C, overnight
Secondary antibody-CY3: 1:200, at room temperature, 1h



Immunofluorescence-Anti-P70 S6 Kinase alpha pAb

Sample: Human stomach tissue
Primary antibody: 1:200, 4°C, overnight
Secondary antibody-CY3: 1:200, at room temperature, 1h

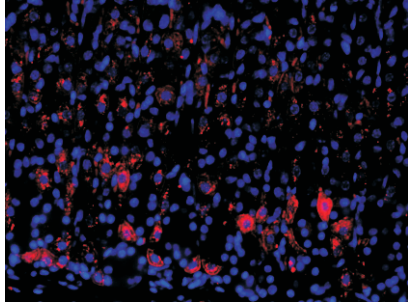
Anti-P70 S6 Kinase alpha Rabbit pAb



WL03839

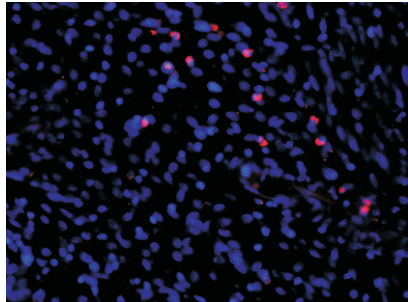
For Research Use Only. Not For Use In Diagnostic Procedures

Product Information



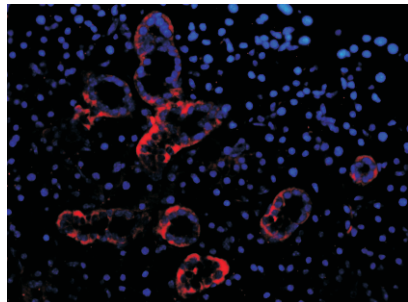
Immunofluorescence-Anti-P70 S6 Kinase alpha pAb

Sample: Mouse stomach tissue
Primary antibody: 1:200, 4°C, overnight
Secondary antibody-CY3: 1:200, at room temperature, 1h



Immunofluorescence-Anti-P70 S6 Kinase alpha pAb

Sample: Rat uterus tissue
Primary antibody: 1:200, 4°C, overnight
Secondary antibody-CY3: 1:200, at room temperature, 1h



Immunofluorescence-Anti-P70 S6 Kinase alpha pAb

Sample: Rat submandibular gland tissue
Primary antibody: 1:200, 4°C, overnight
Secondary antibody-CY3: 1:200, at room temperature, 1h

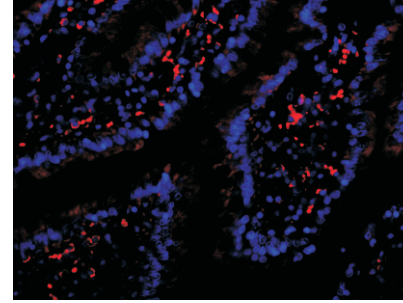
Anti-P70 S6 Kinase alpha Rabbit pAb



WL03839

For Research Use Only. Not For Use In Diagnostic Procedures

Product Images



Immunofluorescence-Anti-P70 S6 Kinase alpha pAb

Sample: Rat intestine tissue
Primary antibody: 1:200, 4°C, overnight
Secondary antibody-CY3: 1:200, at room temperature, 1h