

Anti-DHODH Rabbit pAb



WLR0190

For Research Use Only. Not For Use In Diagnostic Procedures

Product Information

Product name	Anti-DHODH Rabbit pAb	
Source	Rabbit	
Species reactivity	Human, Mouse, Rat	
Tested applications	WB	1:500-1:1000
	IHC, IF	1:50-1:200
Cellular localization	Membrane, Mitochondrion, Mitochondrion inner membrane.	
Pack size	50/100/200/500/1000µl	
Storage	Store at -20°C. Avoid freeze/thaw cycles.	
Storage buffer	Supplied in 20 mM phosphate (pH 7.5), 150 mM NaCl, 100 µg/ml BSA, 50% glycerol and less than 0.02% sodium azide	

General Information

Background DHO dehydrogenase is a single functional protein located on the outer surface of the mitochondrial inner membrane in most eukaryotes. It participates in the "from scratch" UMP biosynthesis process and UDP biosynthesis process. DHODH can catalyze the conversion of dihydroorotate to orotate using quinone as an electron acceptor.

Immunogen Polyclonal antibody is produced by immunizing animals with a synthetic peptide of DHODH.

Purification Polyclonal antibody was purified by immunogen affinity chromatography.

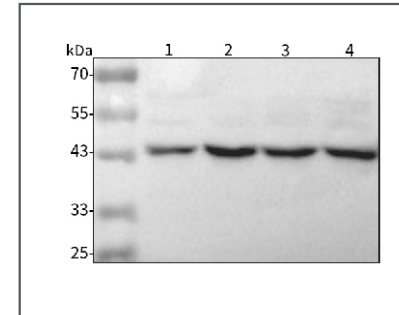
Anti-DHODH Rabbit pAb



WLR0190

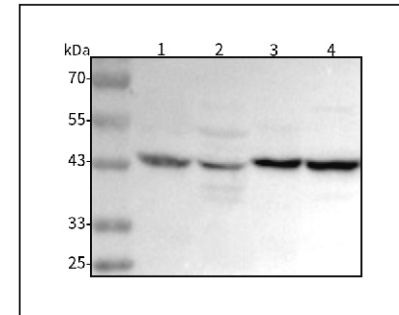
For Research Use Only. Not For Use In Diagnostic Procedures

Product Images



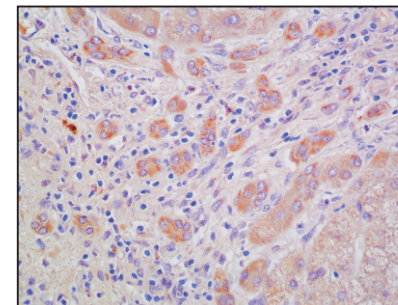
Western blot-Anti-DHODH pAb

Lane 1: Human HEK293 cell lysate
Lane 2: Human HCT116 cell lysate
Lane 3: Human TPC-1 cell lysate
Lane 4: Human A2780 cell lysate
All lanes: Anti-DHODH at 1:1000 dilution
 Lysates/proteins at 20-50 µg per lane.
 Predicted band size: 43 kDa
 Observed band size: 43 kDa



Western blot-Anti-DHODH pAb

Lane 1: Mouse heart tissue lysate
Lane 2: Mouse liver tissue lysate
Lane 3: Rat lung tissue lysate
Lane 4: Rat colon tissue lysate
All lanes: Anti-DHODH at 1:1000 dilution
 Lysates/proteins at 20-50 µg per lane.
 Predicted band size: 43 kDa
 Observed band size: 43 kDa



Immunohistochemistry-Anti-DHODH pAb

Immunohistochemical analysis of paraffin-embedded human liver cancer using anti-DHODH Rabbit Antibody at 1:100 dilution. Perform heat mediated antigen retrieval with Tris-EDTA buffer pH 9.0

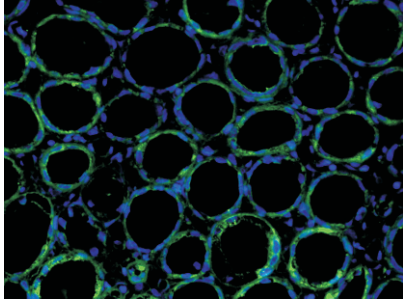


Anti-DHODH Rabbit pAb

WLR0190

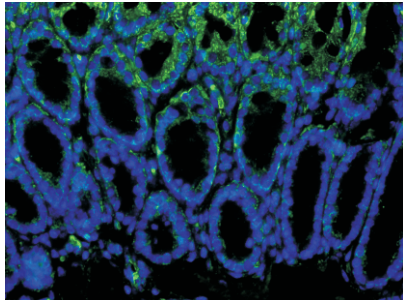
For Research Use Only. Not For Use In Diagnostic Procedures

Product Information



Immunofluorescence-Anti-DHODH pAb

Immunofluorescence analysis of paraffin-embedded human kidney cancer using anti-DHODH Rabbit Antibody at 1:100 dilution.
Perform heat mediated antigen retrieval with Tris-EDTA buffer pH 9.0



Immunofluorescence-Anti-DHODH pAb

Immunofluorescence analysis of paraffin-embedded mouse intestine using anti-DHODH Rabbit Antibody at 1:100 dilution.
Perform heat mediated antigen retrieval with Tris-EDTA buffer pH 9.0