

## Anti-P-MYPT1(Thr853) Rabbit pAb



WLA0824

For Research Use Only. Not For Use In Diagnostic Procedures

## Product Information

<b>Product name</b>	Anti-P-MYPT1(Thr853) Rabbit pAb	
<b>Source</b>	Rabbit	
<b>Species reactivity</b>	Human, Mouse, Rat	
<b>Tested applications</b>	WB	1:500-1:1000
	IHC , IF	1:50-1:200
<b>Cellular localization</b>	Cytoplasm. Cytoskeleton.	
<b>Pack size</b>	50/100/200/500/1000µl	
<b>Storage</b>	Store at -20°C. <b>Avoid freeze/thaw cycles.</b>	
<b>Storage buffer</b>	Supplied in 20 mM phosphate (pH 7.5), 150 mM NaCl, 100 µg/ml BSA, 50% glycerol and less than 0.02% sodium azide	

## General Information

<b>Background</b>	Myosin phosphatase target subunit 1, which is also called the myosin-binding subunit of myosin phosphatase, is one of the subunits of myosin phosphatase. Myosin phosphatase regulates the interaction of actin and myosin in response to signaling through the small GTPase Rho. Rho activity inhibits myosin phosphatase via Rho-associated kinase (ROCK). Phosphorylation of MYPT1 at Thr696 and Thr853 results in phosphatase inhibition and cytoskeletal reorganization. Rho-associated kinase (Rho-kinase), which is activated by GTP. RhoA, phosphorylated MBS and consequently inactivated myosin phosphatase.
<b>Immunogen</b>	Polyclonal antibody is produced by immunizing animals with a synthetic peptide of P-MYPT1(Thr853).
<b>Purification</b>	Polyclonal antibody was purified by immunogen affinity chromatography.

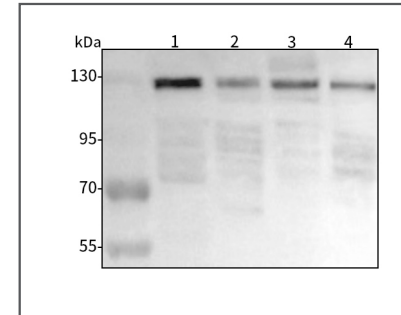
## Anti-P-MYPT1(Thr853) Rabbit pAb



WLA0824

For Research Use Only. Not For Use In Diagnostic Procedures

## Product Images



## Western blot-Anti-P-MYPT1(Thr853) pAb

Lane 1: Human HEK293 cell lysate

Lane 2: Human A2780 cell lysate

Lane 3: Rat RSC96 cell lysate

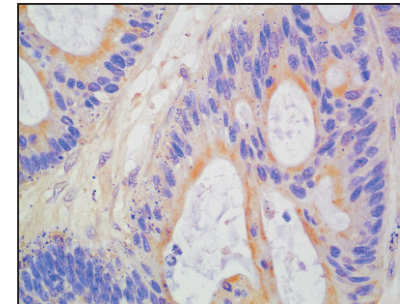
Lane 4: Mouse liver tissue lysate

All lanes: Anti-P-MYPT1(Thr853) at 1:1000 dilution

Lysates/proteins at 20-50 µg per lane.

Predicted band size: 115 kDa

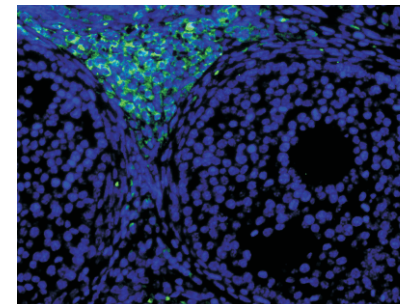
Observed band size: 130 kDa



## Immunohistochemistry-Anti-P-MYPT1(Thr853) pAb

Immunohistochemical analysis of paraffin-embedded human colon cancer using anti-P-MYPT1(Thr853) Rabbit Antibody at 1:100 dilution.

Perform heat mediated antigen retrieval with Tris-EDTA buffer pH 9.0



## Immunofluorescence-Anti-P-MYPT1(Thr853) pAb

Immunofluorescence analysis of paraffin-embedded mouse ovary using anti-P-MYPT1(Thr853) Rabbit Antibody at 1:100 dilution.

Perform heat mediated antigen retrieval with Tris-EDTA buffer pH 9.0