

## Anti-p-c-jun(S63) Rabbit pAb



WLA0865

For Research Use Only. Not For Use In Diagnostic Procedures

## Product Information

<b>Product name</b>	Anti-p-c-jun(S63) Rabbit pAb	
<b>Source</b>	Rabbit	
<b>Species reactivity</b>	Human, Mouse, Rat	
<b>Tested applications</b>	WB	1:500-1:1000
	IHC	1:50-1:200
<b>Cellular localization</b>	Nucleus.	
<b>Pack size</b>	50/100/200/500/1000µl	
<b>Storage</b>	Store at -20°C. <b>Avoid freeze/thaw cycles.</b>	
<b>Storage buffer</b>	Supplied in 20 mM phosphate (pH 7.5), 150 mM NaCl, 100 µg/ml BSA, 50% glycerol and less than 0.02% sodium azide	

## General Information

## Background

The c-Jun proto-oncogene was first identified as the cellular homolog of the avian sarcoma virus v-Jun oncogene. The c-Jun protein, along with c-Fos, is a component of the AP-1 transcriptional complex. c-Jun can form either Jun/Jun homodimers or Jun/Fos heterodimers via the leucine repeats in both proteins. Homo- and heterodimers bind to the TGACTCA consensus sequence present in numerous promoters and initially identified as the phorbol ester tumor promoter response element (TRE). Two additional genes, Jun B and Jun D, have been shown to be almost identical to c-Jun in their C-terminal regions, which are involved in dimerization and DNA binding, whereas their N-terminal domains, which are involved in transcriptional activation, diverge.

## Immunogen

Polyclonal antibody is produced by immunizing animals with a synthetic peptide of p-c-jun(S63).

## Purification

Polyclonal antibody was purified by immunogen affinity chromatography.

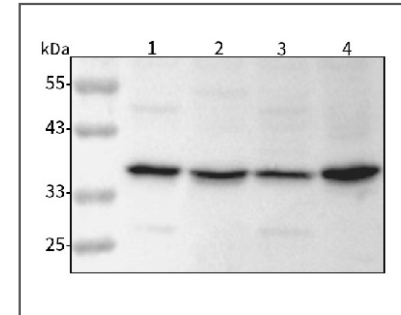
## Anti-p-c-jun(S63) Rabbit pAb



WLA0865

For Research Use Only. Not For Use In Diagnostic Procedures

## Product Images



## Western blot-Anti-p-c-jun(S63) pAb

Lane 1: Human HEK293 cell lysate

Lane 2: Human HCT116 cell lysate

Lane 3: Human TPC-1 cell lysate

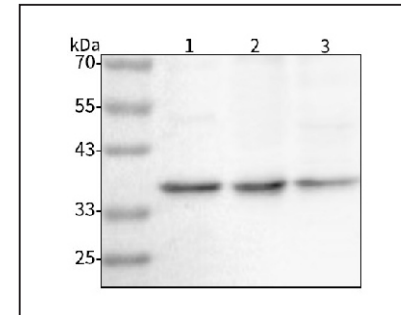
Lane 4: Human A2780 cell lysate

All lanes: Anti-p-c-jun(S63) at 1:1000 dilution

Lysates/proteins at 20-50 µg per lane.

Predicted band size: 36 kDa

Observed band size: 36 kDa



## Western blot-Anti-p-c-jun(S63) pAb

Lane 1: Mouse kidney tissue lysate

Lane 2: Mouse skin tissue lysate

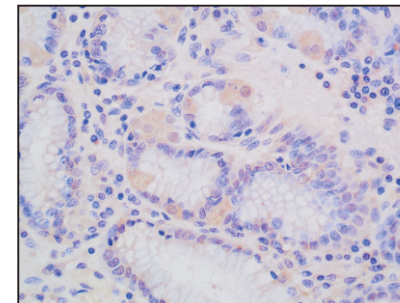
Lane 3: Rat colon tissue lysate

All lanes: Anti-p-c-jun(S63) at 1:1000 dilution

Lysates/proteins at 20-50 µg per lane.

Predicted band size: 36 kDa

Observed band size: 36 kDa



## Immunohistochemistry-Anti-p-c-jun(S63) pAb

Immunohistochemical analysis of paraffin-embedded human stomach cancer using anti-p-c-jun(S63) Rabbit Antibody at 1:100 dilution.

Perform heat mediated antigen retrieval with Tris-EDTA buffer pH 9.0

## Anti-p-c-jun(S63) Rabbit pAb

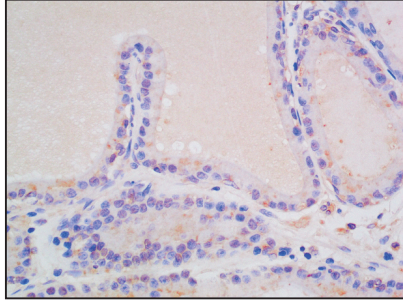
Wanleibio



WLA0865

For Research Use Only. Not For Use In Diagnostic Procedures

### Product Information



#### Immunohistochemistry-Anti-p-c-jun(S63) pAb

Immunohistochemical analysis of paraffin-embedded rat prostate using anti-p-c-jun(S63) Rabbit Antibody at 1:100 dilution.

Perform heat mediated antigen retrieval with Tris-EDTA buffer pH 9.0