



For Research Use Only. Not For Use In Diagnostic Procedures

## Product Information

<b>Product name</b>	Anti-p- EIF4EBP1(Thr37/46) Rabbit pAb	
<b>Source</b>	Rabbit	
<b>Species reactivity</b>	Human, Mouse, Rat	
<b>Tested applications</b>	WB	1:1000-1:2000
	IHC, IF	1:100-1:500
<b>Cellular localization</b>	Cytoplasm, Nucleus.	
<b>Pack size</b>	50/100/200/500/1000µl	
<b>Storage</b>	Store at -20°C. <b>Avoid freeze/thaw cycles.</b>	
<b>Storage buffer</b>	Supplied in 20 mM phosphate (pH 7.5), 150 mM NaCl, 100 µg/ml BSA, 50% glycerol and less than 0.02% sodium azide	

## General Information

**Background**

Eukaryotic translation initiation factor 4E binding protein 1 (4EBP1) is a member of the translation inhibitory protein family. It regulates the translation of mRNA subsets by competing with eIF4G to bind eIF4E, thereby preventing the assembly of eIF4F complexes and inhibiting translation. 4EBP1 is phosphorylated under various signals, including ultraviolet irradiation and insulin signaling, leading to its separation from eIF4E and activation of mRNA translation. It mediates the regulation of protein translation by hormones, growth factors, and other stimuli through the MAP kinase and mTORC1 pathways.

**Immunogen**

Polyclonal antibody is produced by immunizing animals with a synthetic peptide of p- EIF4EBP1(Thr37/46).

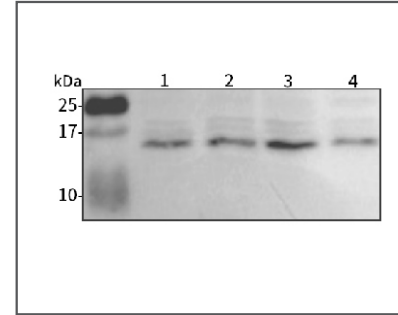
**Purification**

Polyclonal antibody was purified by Protein A affinity chromatography.



For Research Use Only. Not For Use In Diagnostic Procedures

## Product Images



### Western blot-Anti-p- EIF4EBP1(Thr37/46) pAb

Lane 1: Human HEK293 cell lysate

Lane 2: Human HCT116 cell lysate

Lane 3: Human TPC-1 cell lysate

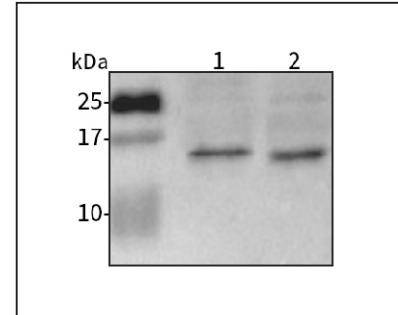
Lane 4: Human A2780 cell lysate

All lanes: Anti-p- EIF4EBP1(Thr37/46) at 1:1000 dilution

Lysates/proteins at 20-50 µg per lane.

Predicted band size: 13 kDa

Observed band size: 15-24 kDa



### Western blot-Anti-p- EIF4EBP1(Thr37/46) pAb

Lane 1: Mouse kidney tissue lysate

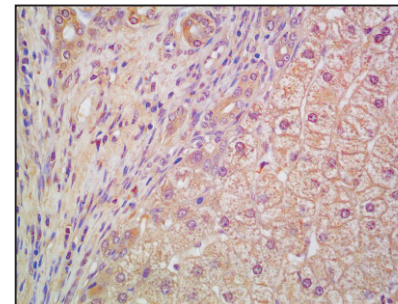
Lane 2: Rat colon tissue lysate

All lanes: Anti-p- EIF4EBP1(Thr37/46) at 1:1000 dilution

Lysates/proteins at 20-50 µg per lane.

Predicted band size: 13 kDa

Observed band size: 15-24 kDa



### Immunohistochemistry-Anti-p- EIF4EBP1(Thr37/46) pAb

Immunohistochemical analysis of paraffin-embedded human liver cancer using anti-p- EIF4EBP1(Thr37/46) Rabbit Antibody at 1:100 dilution. Perform heat mediated antigen retrieval with Tris-EDTA buffer pH 9.0

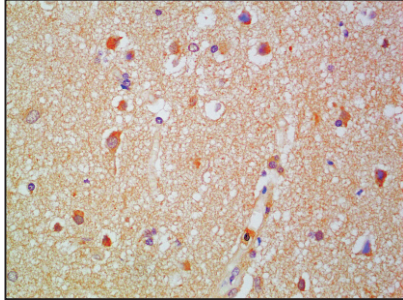
## Anti-p- EIF4EBP1(Thr37/46) Rabbit pAb



WLA0803

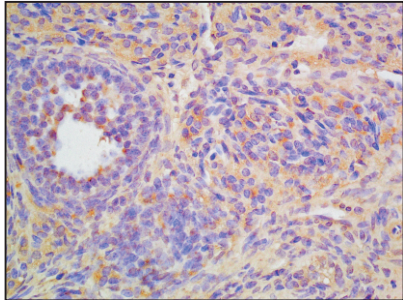
For Research Use Only. Not For Use In Diagnostic Procedures

### Product Information



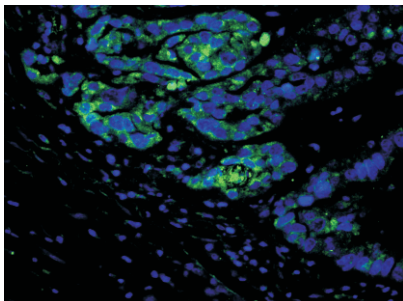
#### Immunohistochemistry-Anti-p- EIF4EBP1(Thr37/46) pAb

Immunohistochemical analysis of paraffin-embedded human brain glioma using anti-p- EIF4EBP1(Thr37/46) Rabbit Antibody at 1:100 dilution. Perform heat mediated antigen retrieval with Tris-EDTA buffer pH 9.0



#### Immunohistochemistry-Anti-p- EIF4EBP1(Thr37/46) pAb

Immunohistochemical analysis of paraffin-embedded rat ovary using anti-p- EIF4EBP1(Thr37/46) Rabbit Antibody at 1:100 dilution. Perform heat mediated antigen retrieval with Tris-EDTA buffer pH 9.0



#### Immunofluorescence-Anti-p- EIF4EBP1(Thr37/46) pAb

Immunofluorescence analysis of paraffin-embedded human pancreas cancer using anti-p- EIF4EBP1(Thr37/46) Rabbit Antibody at 1:100 dilution. Perform heat mediated antigen retrieval with Tris-EDTA buffer pH 9.0

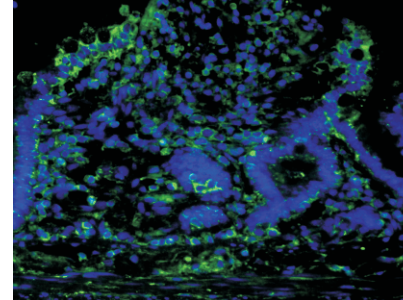
## Anti-p- EIF4EBP1(Thr37/46) Rabbit pAb



WLA0803

For Research Use Only. Not For Use In Diagnostic Procedures

### Product Information



#### Immunofluorescence-Anti-p- EIF4EBP1(Thr37/46) pAb

Immunofluorescence analysis of paraffin-embedded rat intestine using anti-p- EIF4EBP1(Thr37/46) Rabbit Antibody at 1:100 dilution. Perform heat mediated antigen retrieval with Tris-EDTA buffer pH 9.0