

Anti-P- P70 S6 Kinase beta (T389) Rabbit pAb

WLA0699

For Research Use Only. Not For Use In Diagnostic Procedures

Product Information

Product name	Anti-P- P70 S6 Kinase beta (T389) Rabbit pAb	
Source	Rabbit	
Species reactivity	Human, Mouse, Rat	
Tested applications	WB	1:500-1:1000
	IHC , IF	1:50-1:200
Cellular localization	Cytoplasm. Nucleus.	
Pack size	50/100/200/500/1000µl	
Storage	Store at -20°C. Avoid freeze/thaw cycles.	
Storage buffer	Supplied in 20 mM phosphate (pH 7.5), 150 mM NaCl, 100 µg/ml BSA, 50% glycerol and less than 0.02% sodium azide	

General Information

Background

p70 S6 kinase is a mitogen activated Ser/Thr protein kinase that is required for cell growth and G1 cell cycle progression. p70 S6 kinase phosphorylates the S6 protein of the 40S ribosomal subunit and is involved in translational control of 5' oligopyrimidine tract mRNAs. A second isoform, p85 S6 kinase, is derived from the same gene and is identical to p70 S6 kinase except for 23 extra residues at the amino terminus, which encode a nuclear localizing signal. Both isoforms lie on a mitogen activated signaling pathway downstream of phosphoinositide-3 kinase (PI-3K) and the target of rapamycin, FRAP/mTOR, a pathway distinct from the Ras/MAP kinase cascade.

Immunogen

Polyclonal antibody is produced by immunizing animals with a synthetic peptide of P- P70 S6 Kinase beta (T389) .

Purification

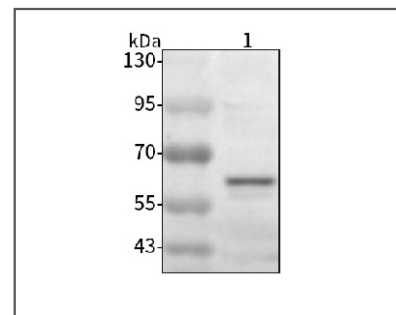
Polyclonal antibody was purified by immunogen affinity chromatography.

Anti-P- P70 S6 Kinase beta (T389) Rabbit pAb

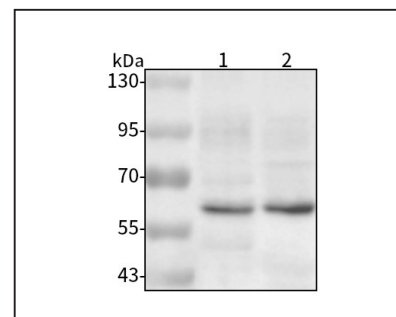
WLA0699

For Research Use Only. Not For Use In Diagnostic Procedures

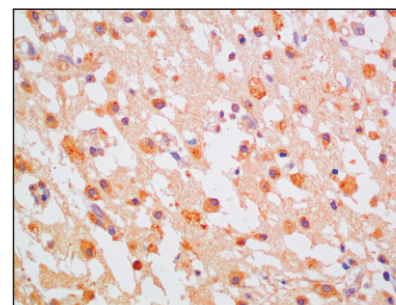
Product Images

**Western blot-Anti-P- P70 S6 Kinase beta (T389) pAb**

Lane 1: Human A2780 cell lysate
 All lanes: Anti-P- P70 S6 Kinase beta (T389) at 1:1000 dilution
 Lysates/proteins at 20-50 µg per lane.
 Predicted band size: 59 kDa
 Observed band size: 59 kDa

**Western blot-Anti-P- P70 S6 Kinase beta (T389) pAb**

Lane 1: Mouse Raw264.7 cell lysate
 Lane 2: Rat RSC96 cell lysate
 All lanes: Anti-P- P70 S6 Kinase beta (T389) at 1:1000 dilution
 Lysates/proteins at 20-50 µg per lane.
 Predicted band size: 59 kDa
 Observed band size: 59 kDa

**Immunohistochemistry-Anti-P- P70 S6 Kinase beta (T389) pAb**

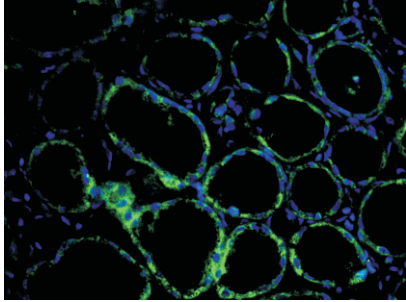
Immunohistochemical analysis of paraffin-embedded human brain glioma using anti-P- P70 S6 Kinase beta (T389) Rabbit Antibody at 1:100 dilution.
 Perform heat mediated antigen retrieval with Tris-EDTA buffer pH 9.0

Anti-P- P70 S6 Kinase beta (T389) Rabbit pAb

WLA0699

For Research Use Only. Not For Use In Diagnostic Procedures

Product Information



Immunofluorescence-Anti-P- P70 S6 Kinase beta (T389) pAb

Immunofluorescence analysis of paraffin-embedded human kidney cancer using anti-P- P70 S6 Kinase beta (T389) Rabbit Antibody at 1:100 dilution.

Perform heat mediated antigen retrieval with Tris-EDTA buffer pH 9.0