

Anti-p-RPS6(Ser235/236) Rabbit pAb



WLA0798

For Research Use Only. Not For Use In Diagnostic Procedures

Product Information

Product name	Anti-p-RPS6(Ser235/236) Rabbit pAb	
Source	Rabbit	
Species reactivity	Human, Mouse, Rat	
Tested applications	WB	1:500-1:1000
	IHC, IF	1:50-1:200
Cellular localization	Cytoplasm, Nucleus.	
Pack size	50/100/200/500/1000µl	
Storage	Store at -20°C. Avoid freeze/thaw cycles.	
Storage buffer	Supplied in 20 mM phosphate (pH 7.5), 150 mM NaCl, 100 µg/ml BSA, 50% glycerol and less than 0.02% sodium azide	

General Information

Background Ribosomes, the organelles that catalyze protein synthesis, consist of a small 40S subunit and a large 60S subunit. Ribosomal protein S6 is the major substrate of protein kinases in eukaryote ribosomes. The phosphorylation is stimulated by growth factors, tumor promoting agents, and mitogens. Dephosphorylation occurs at growth arrest. The protein may contribute to the control of cell growth and proliferation through the selective translation of particular classes of mRNA.

Immunogen Polyclonal antibody is produced by immunizing animals with a synthetic peptide of p-RPS6(Ser235/236).

Purification Polyclonal antibody was purified by immunogen affinity chromatography.

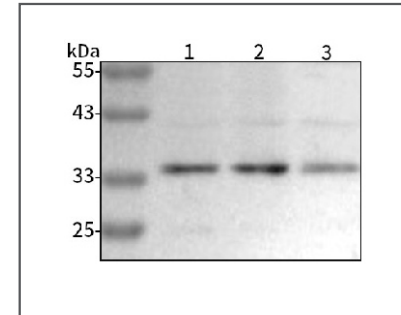
Anti-p-RPS6(Ser235/236) Rabbit pAb



WLA0798

For Research Use Only. Not For Use In Diagnostic Procedures

Product Images



Western blot-Anti-p-RPS6(Ser235/236) pAb

Lane 1: Human HEK293 cell lysate

Lane 2: Human HCT116 cell lysate

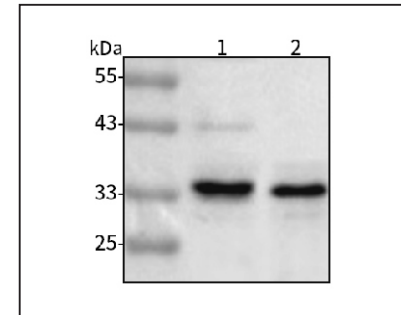
Lane 3: Human TPC-1 cell lysate

All lanes: Anti-p-RPS6(Ser235/236) at 1:1000 dilution

Lysates/proteins at 20-50 µg per lane.

Predicted band size: 28 kDa

Observed band size: 35 kDa



Western blot-Anti-p-RPS6(Ser235/236) pAb

Lane 1: Mouse kidney tissue lysate

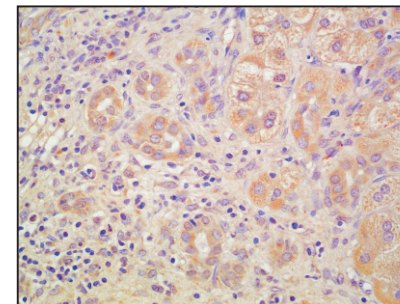
Lane 2: Rat colon tissue lysate

All lanes: Anti-p-RPS6(Ser235/236) at 1:1000 dilution

Lysates/proteins at 20-50 µg per lane.

Predicted band size: 28 kDa

Observed band size: 35 kDa



Immunohistochemistry-Anti-p-RPS6(Ser235/236) pAb

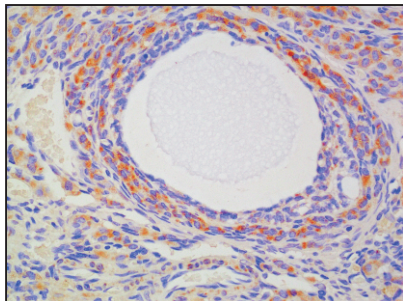
Immunohistochemical analysis of paraffin-embedded human liver cancer using anti-p-RPS6(Ser235/236) Rabbit Antibody at 1:100 dilution.

Perform heat mediated antigen retrieval with Tris-EDTA buffer pH 9.0



For Research Use Only. Not For Use In Diagnostic Procedures

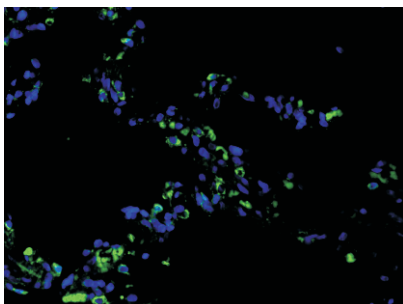
Product Information



Immunohistochemistry-Anti-p-RPS6(Ser235/236) pAb

Immunohistochemical analysis of paraffin-embedded rat ovary using anti-p-RPS6(Ser235/236) Rabbit Antibody at 1:100 dilution.

Perform heat mediated antigen retrieval with Tris-EDTA buffer pH 9.0



Immunofluorescence-Anti-p-RPS6(Ser235/236) pAb

Immunofluorescence analysis of paraffin-embedded human lung cancer using anti-p-RPS6(Ser235/236) Rabbit Antibody at 1:100 dilution.

Perform heat mediated antigen retrieval with Tris-EDTA buffer pH 9.0