

## Anti-FATP2 Rabbit pAb



WLR0188

For Research Use Only. Not For Use In Diagnostic Procedures

## Product Information

<b>Product name</b>	Anti-FATP2 Rabbit pAb	
<b>Source</b>	Rabbit	
<b>Species reactivity</b>	Human, Mouse, Rat	
<b>Tested applications</b>	WB	1:500-1:1000
	IHC, IF	1:50-1:200
<b>Cellular localization</b>	Cell membrane, Endoplasmic reticulum, Microsome, Peroxisome.	
<b>Pack size</b>	50/100/200/500/1000µl	
<b>Storage</b>	Store at -20°C. <b>Avoid freeze/thaw cycles.</b>	
<b>Storage buffer</b>	Supplied in 20 mM phosphate (pH 7.5), 150 mM NaCl, 100 µg/ml BSA, 50% glycerol and less than 0.02% sodium azide	

## General Information

**Background**

FATP2 is an isoenzyme of the long-chain fatty acid CoA ligase family. All isoenzymes in this family are capable of converting free long-chain fatty acids into fatty acyl CoA esters, playing a crucial role in lipid biosynthesis and fatty acid degradation. FATP2 plays an important role in liver fatty acid uptake by promoting the transport of long-chain fatty acids (LCFA) across the cell membrane, mediating their entry into cells. It is also used as an acyl CoA ligase, catalyzing ATP dependent fatty acyl CoA formation using LCFA and ultra long chain fatty acids (VLCFA) as substrates, which can prevent fatty acid efflux from cells and may drive more fatty acid uptake.

**Immunogen**

Polyclonal antibody is produced by immunizing animals with a synthetic peptide of FATP2.

**Purification**

Polyclonal antibody was purified by immunogen affinity chromatography.

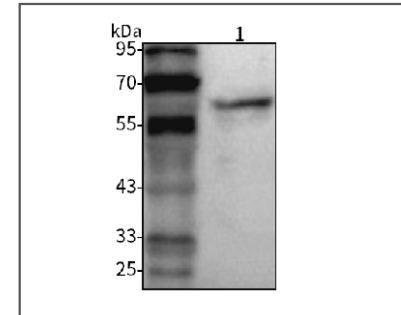
## Anti-FATP2 Rabbit pAb



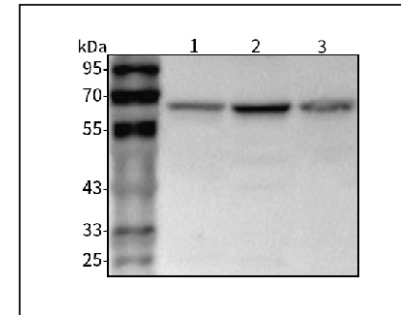
WLR0188

For Research Use Only. Not For Use In Diagnostic Procedures

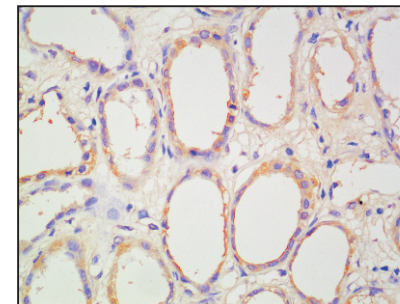
## Product Images

**Western blot-Anti-FATP2 pAb**

Lane 1: Human TPC-1 cell lysate  
 All lanes: Anti-FATP2 at 1:1000 dilution  
 Lysates/proteins at 20-50 µg per lane.  
 Predicted band size: 65 kDa  
 Observed band size: 65 kDa

**Western blot-Anti-FATP2 pAb**

Lane 1: Mouse heart tissue lysate  
 Lane 2: Mouse liver tissue lysate  
 Lane 3: Rat colon tissue lysate  
 All lanes: Anti-FATP2 at 1:1000 dilution  
 Lysates/proteins at 20-50 µg per lane.  
 Predicted band size: 65 kDa  
 Observed band size: 65 kDa

**Immunohistochemistry-Anti-FATP2 pAb**

Immunohistochemical analysis of paraffin-embedded human kidney cancer using anti-FATP2 Rabbit Antibody at 1:100 dilution. Perform heat mediated antigen retrieval with Tris-EDTA buffer pH 9.0

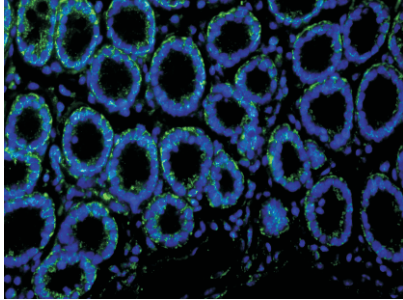
## Anti-FATP2 Rabbit pAb



WLR0188

For Research Use Only. Not For Use In Diagnostic Procedures

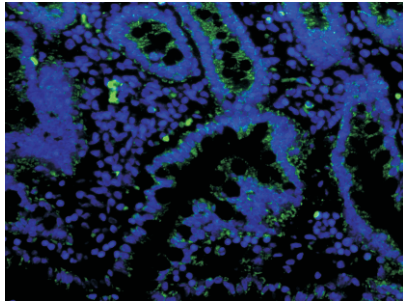
### Product Information



#### Immunofluorescence-Anti-FATP2 pAb

Immunofluorescence analysis of paraffin-embedded mouse intestine using anti-FATP2 Rabbit Antibody at 1:100 dilution.

Perform heat mediated antigen retrieval with Tris-EDTA buffer pH 9.0



#### Immunofluorescence-Anti-FATP2 pAb

Immunofluorescence analysis of paraffin-embedded rat intestine using anti-FATP2 Rabbit Antibody at 1:100 dilution.

Perform heat mediated antigen retrieval with Tris-EDTA buffer pH 9.0