

Anti-CAMSAP2 Rabbit pAb



WLA0864

For Research Use Only. Not For Use In Diagnostic Procedures

Product Information

Product name	Anti-CAMSAP2 Rabbit pAb	
Source	Rabbit	
Species reactivity	Human, Mouse, Rat	
Tested applications	WB	1:500-1:1000
	IHC, IF	1:50-1:200
Cellular localization	Cell projection, Cytoplasm, Cytoskeleton, Golgi apparatus, Microtubule.	
Pack size	50/100/200/500/1000µl	
Storage	Store at -20°C. Avoid freeze/thaw cycles.	
Storage buffer	Supplied in 20 mM phosphate (pH 7.5), 150 mM NaCl, 100 µg/ml BSA, 50% glycerol and less than 0.02% sodium azide	

General Information

Background

CAMSAP2, Also known as CAMSAP1L1, it is a microtubule negative binding protein that is essential for normal microtubule organization in neurons. CAMSAP2 is a key microtubule organizing protein that specifically binds to the negative end of non centrosome microtubules and regulates their dynamics and organization. It can specifically identify the negative end of growing microtubules and autonomously decorate and stabilize the microtubule lattice formed by the aggregation of microtubule negative ends. It can also act on the negative end of free microtubules that are not covered by microtubule nucleating proteins or other factors, and protect the negative end of microtubules from depolymerization. CAMSAP2 stabilizes non centrosome microtubules, which are important for neuronal polarity, axonal regulation, and dendritic branching formation. In addition, it also reduces the rate of microtubule polymerization. CAMSAP2 can regulate autophagosome transport through microtubule cytoskeleton.

Immunogen

Polyclonal antibody is produced by immunizing animals with a synthetic peptide of CAMSAP2.

Purification

Polyclonal antibody was purified by immunogen affinity chromatography.

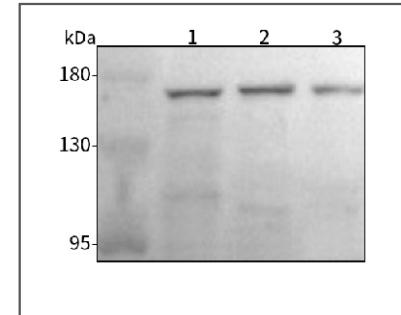
Anti-CAMSAP2 Rabbit pAb



WLA0864

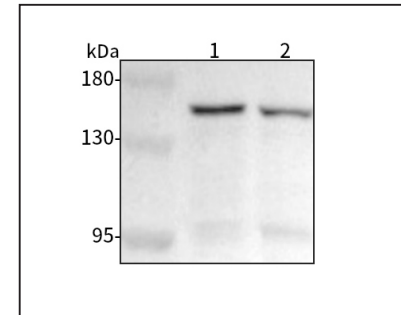
For Research Use Only. Not For Use In Diagnostic Procedures

Product Images



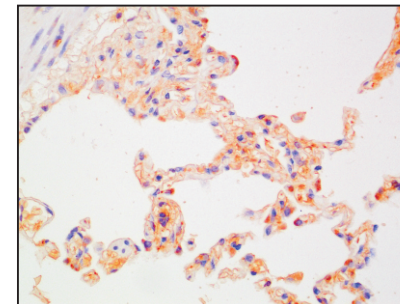
Western blot-Anti-CAMSAP2 pAb

Lane 1: Human HEK293 cell lysate
 Lane 2: Human HCT116 cell lysate
 Lane 3: Human TPC-1 cell lysate
 All lanes: Anti-CAMSAP2 at 1:1000 dilution
 Lysates/proteins at 20-50 µg per lane.
 Predicted band size: 168 kDa
 Observed band size: 168 kDa



Western blot-Anti-CAMSAP2 pAb

Lane 1: Mouse liver tissue lysate
 Lane 2: Rat lung tissue lysate
 All lanes: Anti-CAMSAP2 at 1:1000 dilution
 Lysates/proteins at 20-50 µg per lane.
 Predicted band size: 168 kDa
 Observed band size: 168 kDa



Immunohistochemistry-Anti-CAMSAP2 pAb

Immunohistochemical analysis of paraffin-embedded human lung cancer using anti-CAMSAP2 Rabbit Antibody at 1:100 dilution. Perform heat mediated antigen retrieval with Tris-EDTA buffer pH 9.0

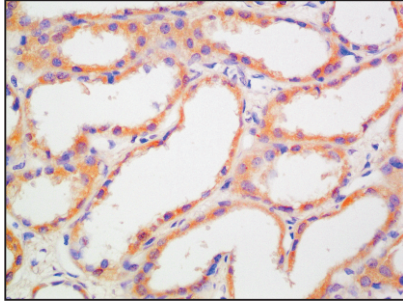
Anti-CAMSAP2 Rabbit pAb



WLA0864

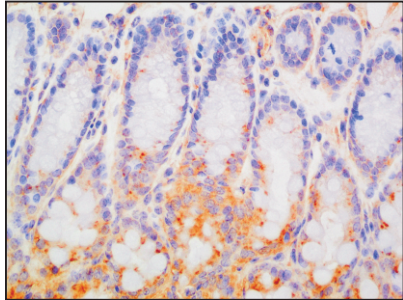
For Research Use Only. Not For Use In Diagnostic Procedures

Product Information



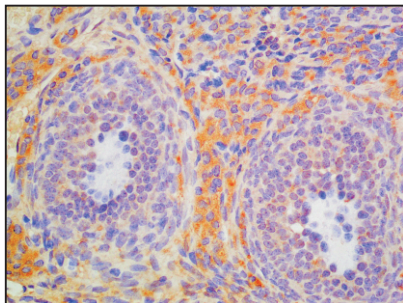
Immunohistochemistry-Anti-CAMSAP2 pAb

Immunohistochemical analysis of paraffin-embedded human kidney cancer using anti-CAMSAP2 Rabbit Antibody at 1:100 dilution.
Perform heat mediated antigen retrieval with Tris-EDTA buffer pH 9.0



Immunohistochemistry-Anti-CAMSAP2 pAb

Immunohistochemical analysis of paraffin-embedded mouse intestine using anti-CAMSAP2 Rabbit Antibody at 1:100 dilution.
Perform heat mediated antigen retrieval with Tris-EDTA buffer pH 9.0



Immunohistochemistry-Anti-CAMSAP2 pAb

Immunohistochemical analysis of paraffin-embedded rat ovary using anti-CAMSAP2 Rabbit Antibody at 1:100 dilution.
Perform heat mediated antigen retrieval with Tris-EDTA buffer pH 9.0

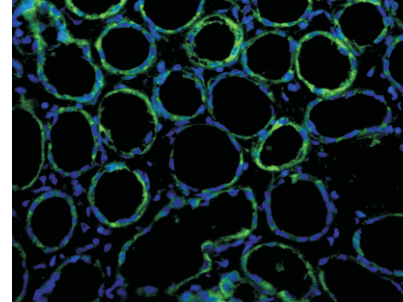
Anti-CAMSAP2 Rabbit pAb



WLA0864

For Research Use Only. Not For Use In Diagnostic Procedures

Product Information



Immunofluorescence-Anti-CAMSAP2 pAb

Immunofluorescence analysis of paraffin-embedded human kidney cancer using anti-CAMSAP2 Rabbit Antibody at 1:100 dilution.
Perform heat mediated antigen retrieval with Tris-EDTA buffer pH 9.0