

Anti-FBXO6 Rabbit pAb



WLA0847

For Research Use Only. Not For Use In Diagnostic Procedures

Product Information

Product name	Anti-FBXO6 Rabbit pAb	
Source	Rabbit	
Species reactivity	Human, Mouse, Rat	
Tested applications	WB	1:1000-1:2000
	IHC , IF	1:100-1:500

Cellular localization Cytoplasm.

Pack size 50/100/200/500/1000µl

Storage Store at -20°C. **Avoid freeze/thaw cycles.**

Storage buffer Supplied in 20 mM phosphate (pH 7.5), 150 mM NaCl, 100 µg/ml BSA, 50% glycerol and less than 0.02% sodium azide

General Information

Background FBXO6, also known as FBG2, FBS2, FBX6, belongs to the F-box protein family. FBXO6 is a substrate recognition component of Skp1-Cullin-1-F-box protein (SCF) ubiquitin E3 ligase complex, which recognizes the shell disaccharides in unfolded N-glycoproteins and targets glycoproteins for polyubiquitination and degradation. It can specifically recognize activated CHEK1 (phosphorylated on Ser-345), promote its ubiquitination and degradation, and participate in DNA damage reactions. FBXO6 can recognize and bind to denatured glycoproteins, which are not only modified with high mannose but also with complex oligosaccharides. Also identify sulfated polysaccharides.

Immunogen Polyclonal antibody is produced by immunizing animals with a synthetic peptide of FBXO6.

Purification Polyclonal antibody was purified by Protein A affinity chromatography.

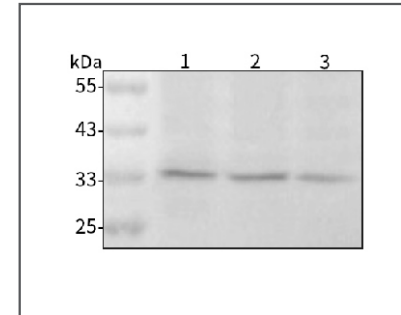
Anti-FBXO6 Rabbit pAb



WLA0847

For Research Use Only. Not For Use In Diagnostic Procedures

Product Images

**Western blot-Anti-FBXO6 pAb**

Lane 1: Human HEK293 cell lysate

Lane 2: Human HCT116 cell lysate

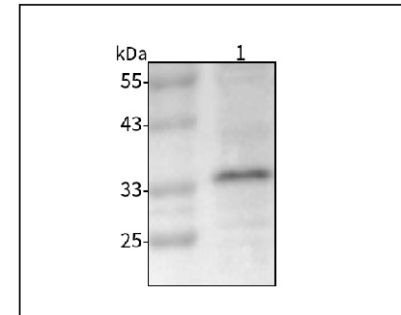
Lane 3: Rat RSC96 cell lysate

All lanes: Anti-FBXO6 at 1:1000 dilution

Lysates/proteins at 20-50 µg per lane.

Predicted band size: 34 kDa

Observed band size: 34 kDa

**Western blot-Anti-FBXO6 pAb**

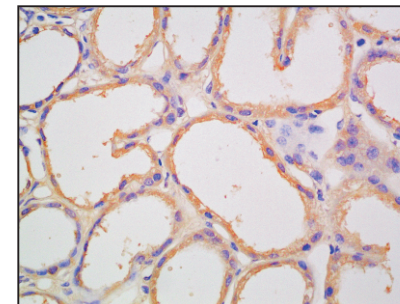
Lane 1: Mouse lung tissue lysate

All lanes: Anti-FBXO6 at 1:1000 dilution

Lysates/proteins at 20-50 µg per lane.

Predicted band size: 34 kDa

Observed band size: 34 kDa

**Immunohistochemistry-Anti-FBXO6 pAb**

Immunohistochemical analysis of paraffin-embedded human kidney cancer using anti-FBXO6 Rabbit Antibody at 1:100 dilution.

Perform heat mediated antigen retrieval with Tris-EDTA buffer pH 9.0

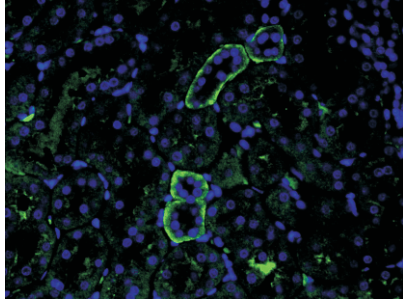
Anti-FBXO6 Rabbit pAb



WLA0847

For Research Use Only. Not For Use In Diagnostic Procedures

Product Information



Immunofluorescence-Anti-FBXO6 pAb

Immunofluorescence analysis of paraffin-embedded rat kidney using anti-FBXO6 Rabbit Antibody at 1:100 dilution.

Perform heat mediated antigen retrieval with Tris-EDTA buffer pH 9.0