

## Anti-EIF4EBP1 Rabbit pAb



WLA0800

For Research Use Only. Not For Use In Diagnostic Procedures

## Product Information

<b>Product name</b>	Anti-EIF4EBP1 Rabbit pAb		
<b>Source</b>	Rabbit		
<b>Species reactivity</b>	Human, Mouse, Rat		
<b>Tested applications</b>	WB	1:1000-1:2000	
	IHC	1:100-1:500	
<b>Cellular localization</b>	Cytoplasm, Nucleus.		
<b>Pack size</b>	50/100/200/500/1000µl		
<b>Storage</b>	Store at -20°C. <b>Avoid freeze/thaw cycles.</b>		
<b>Storage buffer</b>	Supplied in 20 mM phosphate (pH 7.5), 150 mM NaCl, 100 µg/ml BSA, 50% glycerol and less than 0.02% sodium azide		

## General Information

**Background** Eukaryotic translation initiation factor 4E binding protein 1 (4EBP1) is a member of the translation inhibitory protein family. It regulates the translation of mRNA subsets by competing with eIF4G to bind eIF4E, thereby preventing the assembly of eIF4F complexes and inhibiting translation. 4EBP1 is phosphorylated under various signals, including ultraviolet irradiation and insulin signaling, leading to its separation from eIF4E and activation of mRNA translation. It mediates the regulation of protein translation by hormones, growth factors, and other stimuli through the MAP kinase and mTORC1 pathways.

**Immunogen** Polyclonal antibody is produced by immunizing animals with a synthetic peptide of EIF4EBP1.

**Purification** Polyclonal antibody was purified by Protein A affinity chromatography.

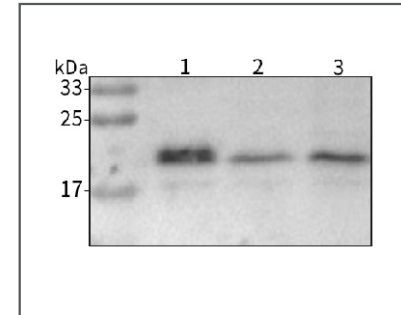
## Anti-EIF4EBP1 Rabbit pAb



WLA0800

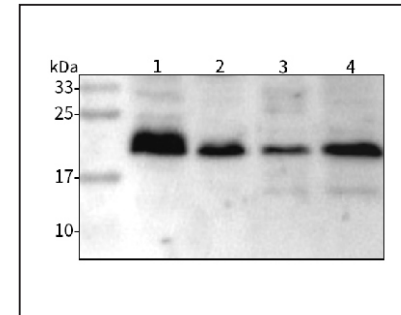
For Research Use Only. Not For Use In Diagnostic Procedures

## Product Images



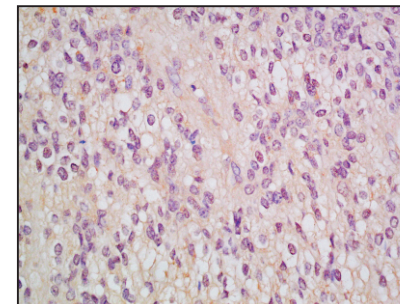
## Western blot-Anti-EIF4EBP1 pAb

Lane 1: Human HCT116 cell lysate  
 Lane 2: Human TPC-1 cell lysate  
 Lane 3: Human A2780 cell lysate  
 All lanes: Anti-EIF4EBP1 at 1:1000 dilution  
 Lysates/proteins at 20-50 µg per lane.  
 Predicted band size: 13 kDa  
 Observed band size: 15-24 kDa



## Western blot-Anti-EIF4EBP1 pAb

Lane 1: Mouse heart tissue lysate  
 Lane 2: Mouse liver tissue lysate  
 Lane 3: Rat colon tissue lysate  
 Lane 4: Rat stomach tissue lysate  
 All lanes: Anti-EIF4EBP1 at 1:1000 dilution  
 Lysates/proteins at 20-50 µg per lane.  
 Predicted band size: 13 kDa  
 Observed band size: 15-24 kDa



## Immunohistochemistry-Anti-EIF4EBP1 pAb

Immunohistochemical analysis of paraffin-embedded human brain glioma using anti-EIF4EBP1 Rabbit Antibody at 1:100 dilution. Perform heat mediated antigen retrieval with Tris-EDTA buffer pH 9.0

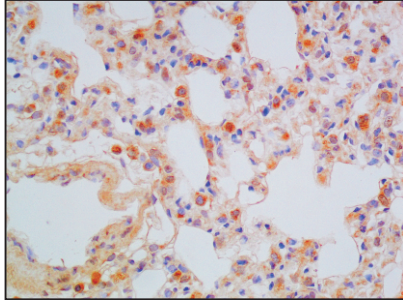
## Anti-EIF4EBP1 Rabbit pAb



WLA0800

For Research Use Only. Not For Use In Diagnostic Procedures

### Product Information



#### Immunohistochemistry-Anti-EIF4EBP1 pAb

Immunohistochemical analysis of paraffin-embedded rat lung using anti-EIF4EBP1 Rabbit Antibody at 1:100 dilution.

Perform heat mediated antigen retrieval with Tris-EDTA buffer pH 9.0