

Anti-Pet1/FEV Rabbit pAb



WLA0588

For Research Use Only. Not For Use In Diagnostic Procedures

Product Information

Product name	Anti-Pet1/FEV Rabbit pAb	
Source	Rabbit	
Species reactivity	Human, Mouse, Rat	
Tested applications	WB	1:1000-1:2000
	IHC	1:100-1:500
Cellular localization	Nucleus.	
Pack size	50/100/200/500/1000µl	
Storage	Store at -20°C. Avoid freeze/thaw cycles.	
Storage buffer	Supplied in 20 mM phosphate (pH 7.5), 150 mM NaCl, 100 µg/ml BSA, 50% glycerol and less than 0.02% sodium azide	

General Information

Background FEV belongs to the ETS transcription factor family and functions as a transcription regulator. It acts as a transcriptional repressor. FEV can regulate the differentiation and maintenance of central serotonergic neurons. It may play a role in cell growth.

Immunogen Polyclonal antibody is produced by immunizing animals with a synthetic peptide of Pet1/FEV.

Purification Polyclonal antibody was purified by Protein A affinity chromatography.

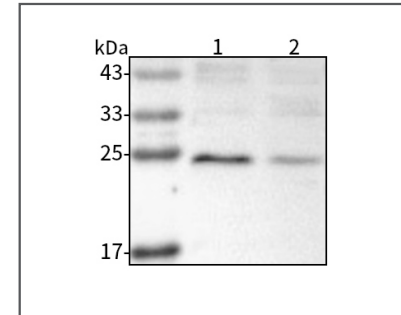
Anti-Pet1/FEV Rabbit pAb



WLA0588

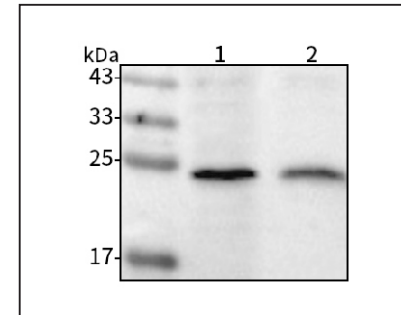
For Research Use Only. Not For Use In Diagnostic Procedures

Product Images



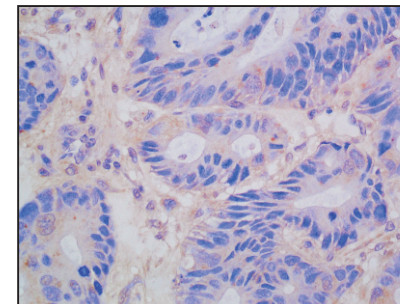
Western blot-Anti-Pet1/FEV pAb

Lane 1: Human HEK293 cell lysate
 Lane 2: Human HCT116 cell lysate
 All lanes: Anti-Pet1/FEV at 1:1000 dilution
 Lysates/proteins at 20-50 µg per lane.
 Predicted band size: 25 kDa
 Observed band size: 25 kDa



Western blot-Anti-Pet1/FEV pAb

Lane 1: Mouse intestine tissue lysate
 Lane 2: Rat RSC96 cell lysate
 All lanes: Anti-Pet1/FEV at 1:1000 dilution
 Lysates/proteins at 20-50 µg per lane.
 Predicted band size: 25 kDa
 Observed band size: 25 kDa



Immunohistochemistry-Anti-Pet1/FEV pAb

Immunohistochemical analysis of paraffin-embedded human colon cancer using anti-Pet1/FEV Rabbit Antibody at 1:100 dilution.
 Perform heat mediated antigen retrieval with Tris-EDTA buffer pH 9.0