

## Anti-KLF3 Rabbit pAb



WLA0353

For Research Use Only. Not For Use In Diagnostic Procedures

## Product Information

<b>Product name</b>	Anti-KLF3 Rabbit pAb	
<b>Source</b>	Rabbit	
<b>Species reactivity</b>	Human, Mouse, Rat	
<b>Tested applications</b>	WB	1:500-1:1000
	IHC	1:50-1:200
<b>Cellular localization</b>	Nucleus.	
<b>Pack size</b>	50/100/200/500/1000µl	
<b>Storage</b>	Store at -20°C. <b>Avoid freeze/thaw cycles.</b>	
<b>Storage buffer</b>	Supplied in 20 mM phosphate (pH 7.5), 150 mM NaCl, 100 µg/ml BSA, 50% glycerol and less than 0.02% sodium azide	

## General Information

**Background**

KLF3 can affect neural tube formation and organ development by regulating the expression of genes related to cell differentiation. It can also inhibit adipocyte differentiation by suppressing the expression of C/EBP  $\alpha$  and FAS genes; Simultaneously promoting the activity of PPAR  $\gamma$  promoter. KLF3 is closely related to neuronal differentiation, participating in the process of neural tube formation, and can also regulate the development and maturation of B cells. KLF3 may be involved in obesity, diabetes and other metabolic diseases.

**Immunogen**

Polyclonal antibody is produced by immunizing animals with a synthetic peptide of KLF3.

**Purification**

Polyclonal antibody was purified by immunogen affinity chromatography.

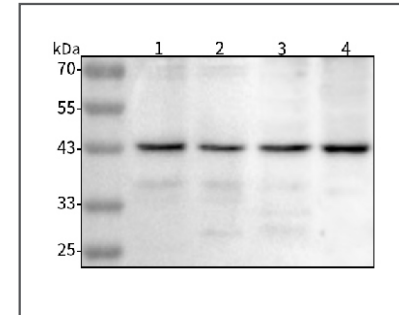
## Anti-KLF3 Rabbit pAb



WLA0353

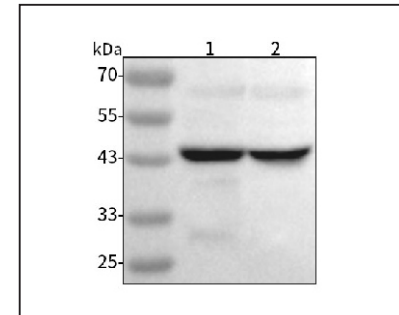
For Research Use Only. Not For Use In Diagnostic Procedures

## Product Images



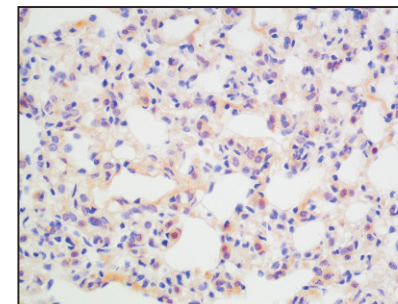
## Western blot-Anti-KLF3 pAb

Lane 1: Human HEK293 cell lysate  
 Lane 2: Human HCT116 cell lysate  
 Lane 3: Human TPC-1 cell lysate  
 Lane 4: Human A2780 cell lysate  
 All lanes: Anti-KLF3 at 1:1000 dilution  
 Lysates/proteins at 20-50 µg per lane.  
 Predicted band size: 39 kDa  
 Observed band size: 43 kDa



## Western blot-Anti-KLF3 pAb

Lane 1: Mouse heart tissue lysate  
 Lane 2: Rat liver tissue lysate  
 All lanes: Anti-KLF3 at 1:1000 dilution  
 Lysates/proteins at 20-50 µg per lane.  
 Predicted band size: 39 kDa  
 Observed band size: 43 kDa



## Immunohistochemistry-Anti-KLF3 pAb

Immunohistochemical analysis of paraffin-embedded rat lung using anti-KLF3 Rabbit Antibody at 1:100 dilution. Perform heat mediated antigen retrieval with Tris-EDTA buffer pH 9.0