

Anti-ROD1 Rabbit pAb



WLA0807

For Research Use Only. Not For Use In Diagnostic Procedures

Product Information

Product name	Anti-ROD1 Rabbit pAb	
Source	Rabbit	
Species reactivity	Human, Mouse, Rat	
Tested applications	WB	1:500-1:1000
	IHC	1:50-1:200
Cellular localization	Nucleus.	
Pack size	50/100/200/500/1000µl	
Storage	Store at -20°C. Avoid freeze/thaw cycles.	
Storage buffer	Supplied in 20 mM phosphate (pH 7.5), 150 mM NaCl, 100 µg/ml	

BSA, 50% glycerol and less than 0.02% sodium azide

General Information

Background

ROD1 is an RNA binding protein. It can mediate the regulation of alternative splicing of precursor mRNA and play a role in the regulation of cell proliferation, differentiation, and migration. ROD1 is a positive regulatory factor for EPO dependent erythropoiesis. It can participate in cell differentiation regulation by inhibiting tissue-specific exons.

Immunogen

Polyclonal antibody is produced by immunizing animals with a synthetic peptide of ROD1.

Purification

Polyclonal antibody was purified by immunogen affinity chromatography.

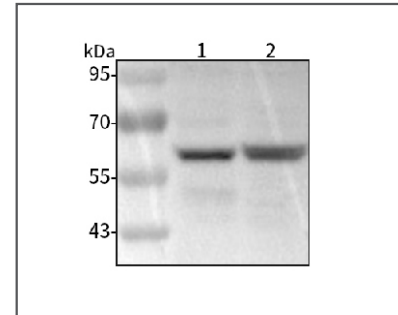
Anti-ROD1 Rabbit pAb



WLA0807

For Research Use Only. Not For Use In Diagnostic Procedures

Product Images



Western blot-Anti-ROD1 pAb

Lane 1: Human HCT116 cell lasate

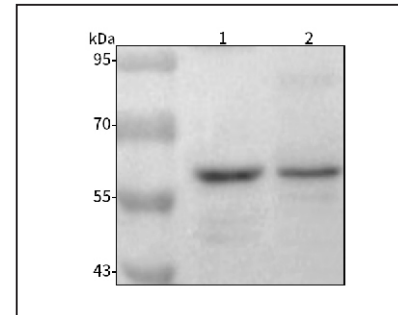
Lane 2: Human TPC-1 cell lasate

All lanes: Anti-ROD1 at 1:1000 dilution

Lysates/proteins at 20-50 µg per lane.

Predicted band size: 60 kDa

Observed band size: 60 kDa



Western blot-Anti-ROD1 pAb

Lane 1: Mouse thymus gland tissue lysate

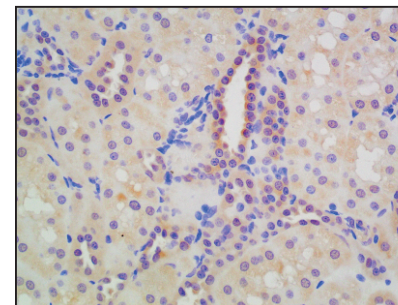
Lane 2: Rat thymus gland tissue lysate

All lanes: Anti-ROD1 at 1:1000 dilution

Lysates/proteins at 20-50 µg per lane.

Predicted band size: 60 kDa

Observed band size: 60 kDa



Immunohistochemistry-Anti-ROD1 pAb

Immunohistochemical analysis of paraffin-embedded rat kidney using anti-ROD1 Rabbit Antibody at 1:100 dilution.

Perform heat mediated antigen retrieval with Tris-EDTA buffer pH 9.0