

Anti-LC3 α/β Rabbit pAb

WL01506

For Research Use Only. Not For Use In Diagnostic Procedures

Product Information

Product name	Anti-LC3 α/β Rabbit pAb	
Source	Rabbit	
Species reactivity	Human, Mouse, Rat	
Tested applications	WB	1:1000-1:2000
	IHC	1:100-1:500
	IF	1:100-1:400

Cellular localization Cytoplasm ,cytoskeleton and Endomembrane system

Pack size 50/100/200/500/1000 μ l

Storage Store at -20°C. **Avoid freeze/thaw cycles.**

Storage buffer Supplied in 20 mM phosphate (pH 7.5), 150 mM NaCl, 100 μ g/ml

BSA, 50% glycerol and less than 0.02% sodium azide

General Information

Background

The autophagy protein LC3, a mammalian homologue of Atg8, was originally identified as microtubule-associated protein 1 light chain 3. It is a component of both the MAP1A and MAP1B microtubule-binding domains and the heavy-chain independent regulation of LC3 expression might modify MAP1 microtubule-binding activity during development. LC3 is the only known mammalian protein identified that stably associate with the autophagosome membranes. LC3-I is cytosolic and LC3-II is membrane bound and enriched in the autophagic vacuole fraction. The detection of LC3-I to LC3-II conversion is a useful and sensitive marker for distinguishing autophagy in mammalian cells.

Immunogen

Polyclonal antibody is produced by immunizing animals with a synthetic peptide of LC3 α/β .

Purification

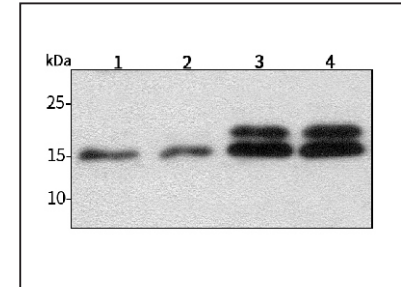
Polyclonal antibody was purified by protein A affinity chromatography.

Anti-LC3 α/β Rabbit pAb

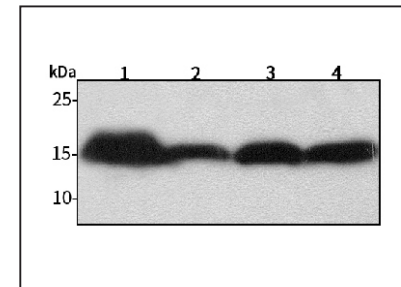
WL01506

For Research Use Only. Not For Use In Diagnostic Procedures

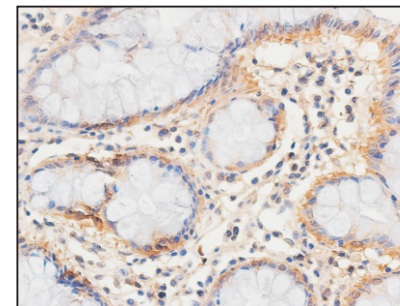
Product Images

Western blot-Anti-LC3 α/β pAb

Lane 1: Human HEK-293 cell lysate
 Lane 2: Human THP-1 cell lysate
 Lane 3: Human MCF-7 cell lysate
 Lane 4: Human HepG2 cell lysate
 All lanes: Anti-LC3 α/β at 1:1000 dilution
 Lysates/proteins at 20-50 μ g per lane.
 Predicted band size: 14,16 kDa
 Observed band size: 14,16 kDa

Western blot-Anti-LC3 α/β pAb

Lane 1: Mouse heart tissue lysate
 Lane 2: Mouse brain tissue lysate
 Lane 3: Rat liver tissue lysate
 Lane 4: Rat colon tissue lysate
 All lanes: Anti-LC3 α/β at 1:1000 dilution
 Lysates/proteins at 20-50 μ g per lane.
 Predicted band size: 14,16 kDa
 Observed band size: 14,16 kDa

Immunohistochemistry-Anti-LC3 α/β pAb

Immunohistochemical analysis of paraffin-embedded human stomach cancer using anti-LC3 α/β Rabbit Antibody at 1:100 dilution.
 Perform heat mediated antigen retrieval with Tris-EDTA buffer pH 9.0

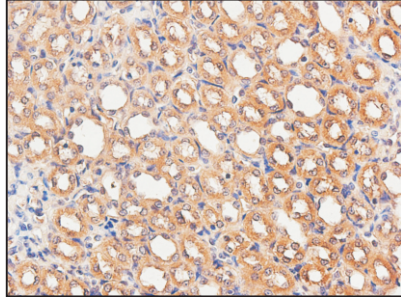
Anti-LC3 α/β Rabbit pAb



WL01506

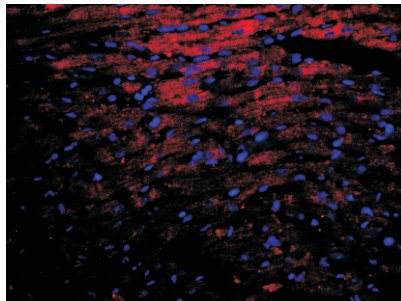
For Research Use Only. Not For Use In Diagnostic Procedures

Product Information



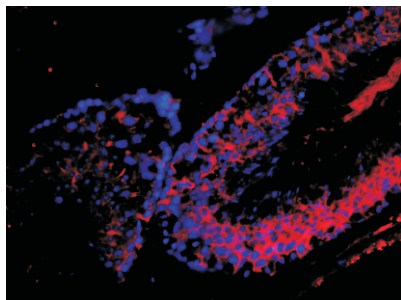
Immunohistochemistry-Anti-LC3 α/β pAb

Immunohistochemical analysis of paraffin-embedded rat kidney using anti-LC3 α/β Rabbit Antibody at 1:500 dilution.
Perform heat mediated antigen retrieval with Tris-EDTA buffer pH 9.0



Immunofluorescence-Anti-LC3 α/β pAb

Immunofluorescence analysis of paraffin-embedded mouse heart using anti-LC3 α/β Rabbit Antibody at 1:200 dilution.
Perform heat mediated antigen retrieval with Tris-EDTA buffer pH 9.0



Immunofluorescence-Anti-LC3 α/β pAb

Immunofluorescence analysis of paraffin-embedded mouse testicle using anti-LC3 α/β Rabbit Antibody at 1:200 dilution.
Perform heat mediated antigen retrieval with Tris-EDTA buffer pH 9.0

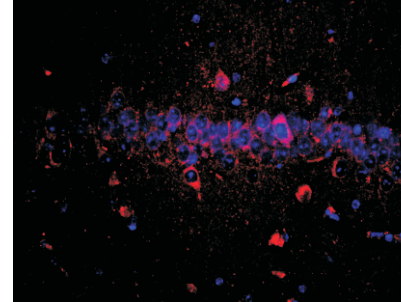
Anti-LC3 α/β Rabbit pAb



WL01506

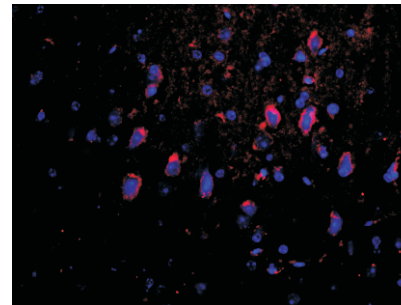
For Research Use Only. Not For Use In Diagnostic Procedures

Product Images



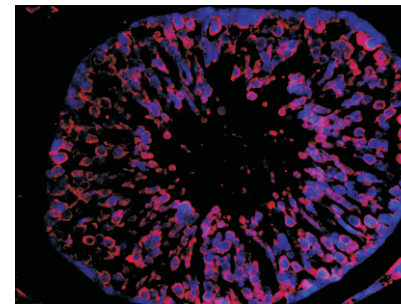
Immunofluorescence-Anti-LC3 α/β pAb

Immunofluorescence analysis of paraffin-embedded mouse hippocampus using anti-LC3 α/β Rabbit Antibody at 1:200 dilution.
Perform heat mediated antigen retrieval with Tris-EDTA buffer pH 9.0



Immunofluorescence-Anti-LC3 α/β pAb

Immunofluorescence analysis of paraffin-embedded mouse cerebral cortex using anti-LC3 α/β Rabbit Antibody at 1:200 dilution.
Perform heat mediated antigen retrieval with Tris-EDTA buffer pH 9.0



Immunofluorescence-Anti-LC3 α/β pAb

Immunofluorescence analysis of paraffin-embedded rat testicle using anti-LC3 α/β Rabbit Antibody at 1:200 dilution.
Perform heat mediated antigen retrieval with Tris-EDTA buffer pH 9.0