

Anti-p-MLKL(Ser358) Rabbit pAb



WLA0567

For Research Use Only. Not For Use In Diagnostic Procedures

Product Information

Product name	Anti-p-MLKL(Ser358) Rabbit pAb	
Source	Rabbit	
Species reactivity	Human, Mouse, Rat	
Tested applications	WB	1:500-1:1000
	IHC,IF	1:100-1:200
Cellular localization	Cell membrane, Cytoplasm, Nucleus.	
Pack size	50/100/200/500/1000µl	
Storage	Store at -20°C. Avoid freeze/thaw cycles.	
Storage buffer	Supplied in 20 mM phosphate (pH 7.5), 150 mM NaCl, 100 µg/ml BSA, 50% glycerol and less than 0.02% sodium azide	

General Information

Background

MLKL belongs to the protein kinase superfamily. The protein encoded by this gene contains a protein kinase-like domain; however, it is considered to lack protein kinase activity. This protein plays a crucial role in tumor necrosis factor (TNF)-induced necroptosis, a programmed cell death process, by interacting with receptor-interacting protein 3 (RIP3), which is a key signaling molecule in the necroptosis pathway. Upon phosphorylation and activation by RIP3, it forms a homotrimer, localizes to the plasma membrane, and executes programmed necrosis, characterized by calcium influx and plasma membrane damage.

Immunogen

Polyclonal antibody is produced by immunizing animals with a synthetic peptide of p-MLKL(Ser358).

Purification

Polyclonal antibody was purified by immunogen affinity chromatography.

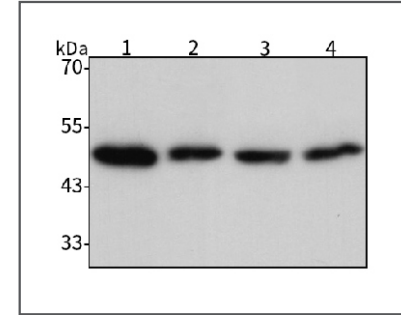
Anti-p-MLKL(Ser358) Rabbit pAb



WLA0567

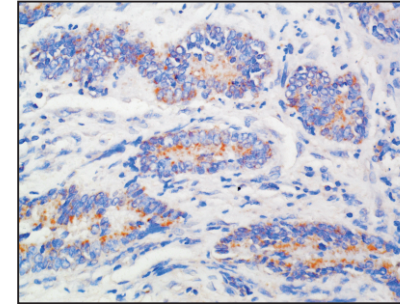
For Research Use Only. Not For Use In Diagnostic Procedures

Product Images



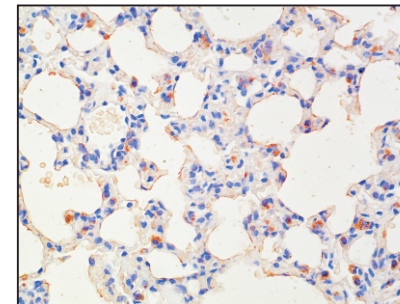
Western blot-Anti-p-MLKL(Ser358) pAb

Lane 1: Human HeLa cell lysate
 Lane 2: Human A2780 cell lysate
 Lane 3: Human Raji cell lysate
 Lane 4: Human LP-1 cell lysate
 All lanes: Anti-p-MLKL(Ser358) at 1:1000 dilution
 Lysates/proteins at 20-50 µg per lane
 Predicted band size: 54 kDa
 Observed band size: 45 kDa



Immunohistochemistry-Anti-p-MLKL(Ser358) pAb

Immunohistochemical analysis of paraffin-embedded human pancreas cancer using anti-p-MLKL(Ser358) Rabbit Antibody at 1:100 dilution. Perform heat mediated antigen retrieval with Tris-EDTA buffer pH 9.0



Immunohistochemistry-Anti-p-MLKL(Ser358) pAb

Immunohistochemical analysis of paraffin-embedded rat lung using anti-p-MLKL(Ser358) Rabbit Antibody at 1:100 dilution. Perform heat mediated antigen retrieval with Tris-EDTA buffer pH 9.0

Anti-p-MLKL(Ser358) Rabbit pAb

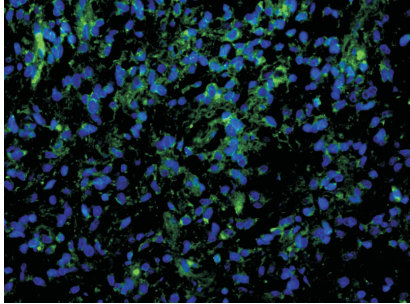
Wanleibio



WLA0567

For Research Use Only. Not For Use In Diagnostic Procedures

Product Information



Immunofluorescence-Anti-p-MLKL(Ser358) pAb

Immunofluorescence analysis of paraffin-embedded human brain glioma using anti-p-MLKL(Ser358) Rabbit Antibody at 1:100 dilution.

Perform heat mediated antigen retrieval with Tris-EDTA buffer pH 9.0